



SCI ENGINEERING, INC.

EARTH • SCIENCE • SOLUTIONS

GEOTECHNICAL
ENVIRONMENTAL
NATURAL RESOURCES
CULTURAL RESOURCES
CONSTRUCTION SERVICES

April 2, 2024

Michael Gegg
Mehlville School District
3120 Lemay Ferry Road
St. Louis, Missouri 63125

RE: Lead in Drinking Water Report
Mehlville High School
3200 Lemay Ferry Road
St. Louis, Missouri
SCI No. 2016-0860.2T

Dear Michael Gegg:

INTRODUCTION

SCI Engineering, Inc. (SCI) is pleased to submit this report summarizing lead in drinking water sampling activities performed on June 15, 2023. The purpose of the sampling activities was to screen for elevated levels of lead in the drinking water at potable water sources throughout the above-referenced structure.

The drinking water survey is intended to satisfy the requirements for the “Get the Lead Out of School Drinking Water Act” (GTLOSDWA), Section 160.077 administered by the Missouri Department of Health and Senior Services. Potable water sources to be tested were identified by the school district prior to SCI’s field activities.

LIMITATIONS

SCI's sampling activities were limited to locations identified by the school district. If any additional potable water sources need testing, please contact SCI, and we will make arrangements for sampling these fixtures. Potable water sources that were not sampled will need a sign placed near each fixture informing students and faculty it is not to be used as a drinking water source.

During the course of performing the drinking water sampling of the structure, SCI was unable to sample four fixtures because they were out of order. These fixtures included the left water fountain in the lower commons, the water fountain near the bathrooms by the library, and the southeast bottle filler and water fountain on the second floor near the computer lab. If these fixtures are made operational, they should be sampled or labeled non-potable. SCI was able to sample all other locations identified by the school district.

DRINKING WATER SURVEY

SCI collected “first draw” samples which consisted of collecting a water sample from each fixture or sample location after it remained stagnant for at least eight hours. Prior to sampling, SCI first mobilized

to the site to flush the identified potable water fixtures throughout the structure. Once each fixture was flushed, a sign was placed on the fixture indicating it should not be used. SCI then revisited the site, after a minimum of eight hours, to collect water samples from the fixtures.

SCI collected 69 drinking water samples (MHS-1 through MHS-69) from various water fixtures located throughout the structure and submitted them for analytical testing. The drinking water samples were analyzed for total lead by U.S. EPA Method 200.8. SCI collected a minimum of 250 milliliters of water from each location. Sampled water was containerized in laboratory-provided sample containers and shipped to the lab using standard chain-of-custody procedures. Figures depicting the locations of the sampled water fixtures are enclosed.

The drinking water samples were analyzed for lead in accordance with the GTLOSDWA, Section 160.077, which establishes an action level (AL) of 5 parts per billion (ppb). The drinking water samples which exceeded the AL are identified in Table 1, below. A copy of the analytical test results and chain-of-custody for all samples is enclosed.

Table 1 – Lead in Drinking Water Results

Sample Number	Sample Location	Sample Description	Result (ppb)
MHS-13	Library Office	Sink	9.3
MHS-16	Stairwell 13	Slop Sink	23.7
MHS-19	Room 110	Sink	6.7
MHS-23	Room 127	Sink	11.0
MHS-56	Hallway Outside Room 228	Bottle Filler	138

CONCLUSION AND RECOMMENDATIONS

As can be seen in Table 1, above, five drinking water samples exceeded the AL. SCI recommends any fixture which exceeds the AL be taken out of service until remediated and follow up testing indicates results less than the AL. Alternatively, if a water fixture is determined not to be a potable drinking water source, signage may be installed indicating the purpose and/or restrictions of the fixture.

According to GTLOSDWA, any water fixtures which exceed the AL shall be remediated prior to August 1, 2024, or the first day on which students will be present in the building, whichever is later. Any replacement fixture shall be lead free, as defined in 40 CFR 143.12.

REPORTING

Within seven business days after receiving this report, the school district shall contact parents and staff via written notification which shall include the following:

- The test results and a summary that explains such results;
- A description of any remedial steps taken;

- A description of general health effects of lead contamination and community specific resources;
and
- If there is not enough water to meet the drinking water needs of the students, teachers and staff, bottled water shall be provided.

Additionally, within two weeks of receiving this report, the results and any lead remediation plans must be made available on the school's website.

This report, and subsequent annual testing reports, must be submitted to the Missouri Department of Health and Senior Services, Healthy Drinking Water Unit, PO Box 570, Jefferson City, MO 65102-0570.

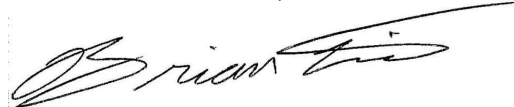
FUTURE TESTING

After the fixtures identified in Table 1, above, have been remediated, at least 25 percent of the remediated fixtures must be sampled annually until all remediated sources have been tested. However, SCI recommends all fixtures be tested once they have been remediated. Once all fixtures have been tested and are below the action level, the school shall test the potable drinking water fixtures once every five years.


SCI appreciates the opportunity to be of service to you on this project, and we look forward to working with you in the future. Please contact us if you have any questions or comments regarding the information provided.

Respectfully,

SCI ENGINEERING, INC.



Brian L. Lieb
Project Scientist

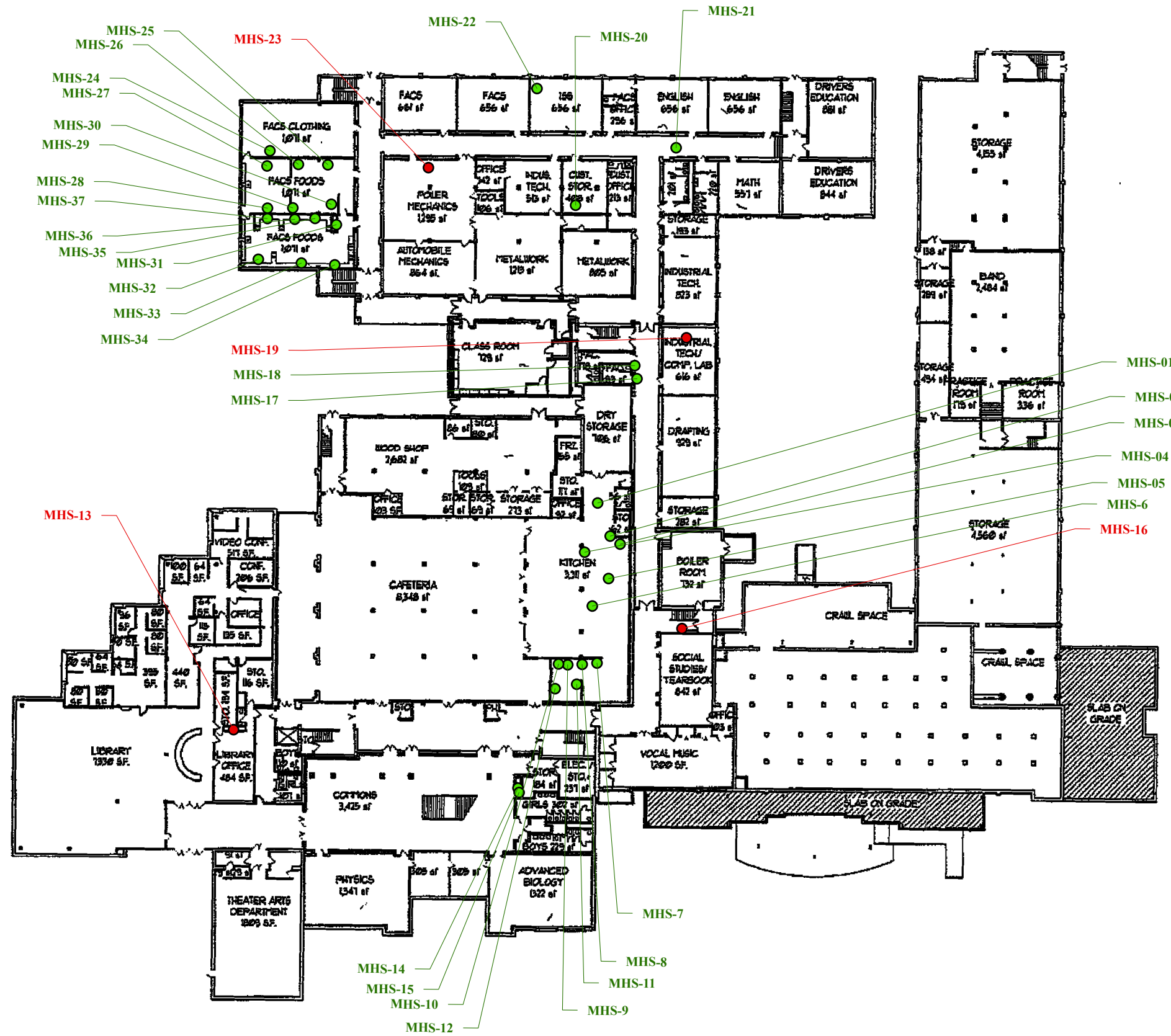


Jessica B. Keeven, CHMM
Senior Scientist

BLL/JBK/bms

Enclosure

Lead Drinking Water Sampling Plan
Lead Testing Results



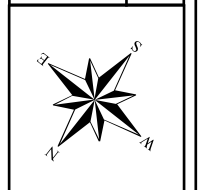
GENERAL NOTES/LEGEND

- RESULTS GREATER THAN THE ACTION LEVEL OF 5 PARTS PER BILLION
- RESULTS LESS THAN THE ACTION LEVEL OF 5 PARTS PER BILLION

FLOOR PLANS PROVIDED BY MEHLVILLE SCHOOL DISTRICT.
 DIMENSIONS AND LOCATIONS ARE APPROXIMATE; ACTUAL MAY VARY. DRAWING SHALL NOT BE USED OUTSIDE THE CONTEXT OF THE REPORT FOR WHICH IT WAS GENERATED.

PROJECT NAME
 MEHLVILLE SCHOOL DISTRICT
 MEHLVILLE HIGH SCHOOL - 1ST FLOOR
 ST. LOUIS, MISSOURI

LEAD DRINKING WATER SAMPLING PLAN



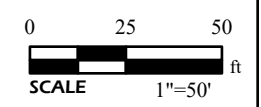
JOB NUMBER
2016-0860.2T

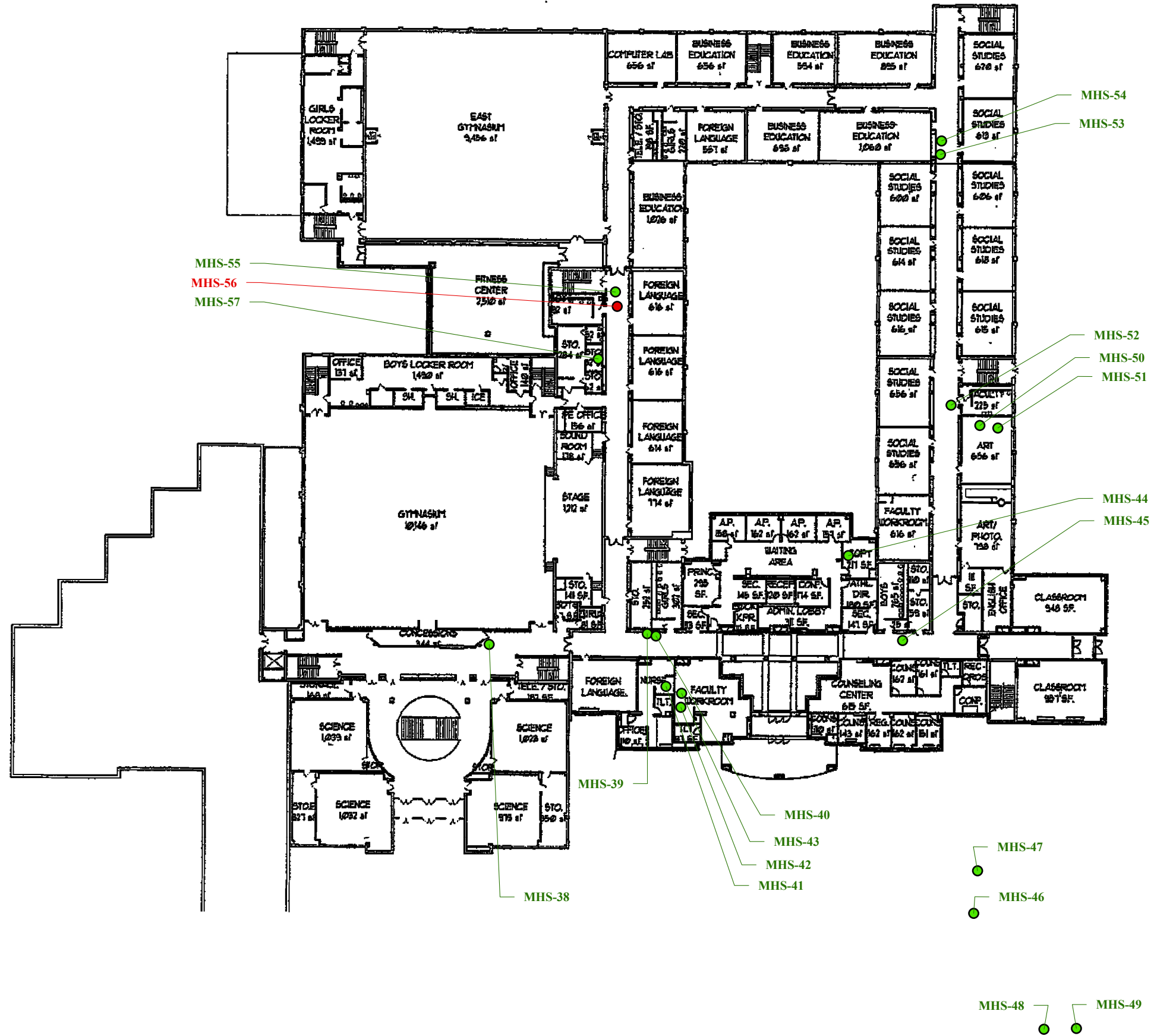
FIGURE DATE
02/27/2024

DRAWN BY
JTM

CHECKED BY
BLL

FIGURE
1





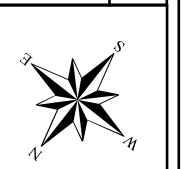
GENERAL NOTES/LEGEND

- RESULTS GREATER THAN THE ACTION LEVEL OF 5 PARTS PER BILLION
- RESULTS LESS THAN THE ACTION LEVEL OF 5 PARTS PER BILLION

FLOOR PLANS PROVIDED BY MEHLVILLE SCHOOL DISTRICT.
 DIMENSIONS AND LOCATIONS ARE APPROXIMATE; ACTUAL MAY VARY. DRAWING SHALL NOT BE USED OUTSIDE THE CONTEXT OF THE REPORT FOR WHICH IT WAS GENERATED.

PROJECT NAME
 MEHLVILLE SCHOOL DISTRICT
 MEHLVILLE HIGH SCHOOL - 2ND FLOOR
 ST. LOUIS, MISSOURI

LEAD DRINKING WATER SAMPLING PLAN



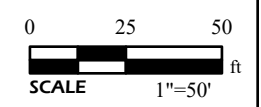
JOB NUMBER
2016-0860.2T

FIGURE DATE
02/27/2024

DRAWN BY
JTM

CHECKED BY
BLL

FIGURE
2



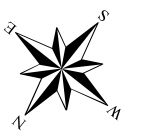


GENERAL NOTES/LEGEND
 ● RESULTS LESS THAN THE ACTION LEVEL OF 5 PARTS PER BILLION

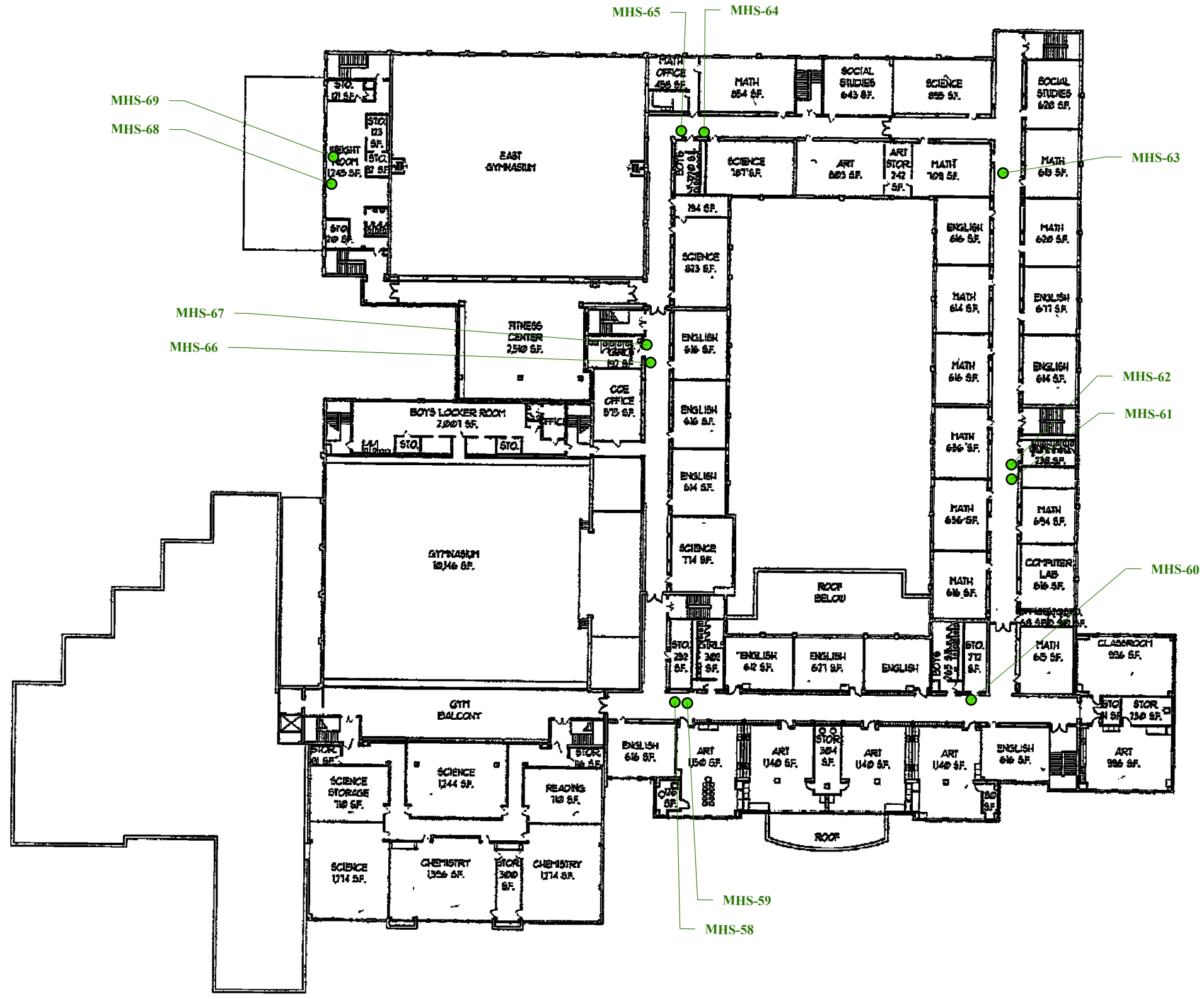
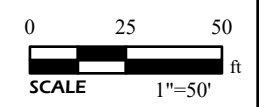
FLOOR PLANS PROVIDED BY MEHLVILLE SCHOOL DISTRICT.
 DIMENSIONS AND LOCATIONS ARE APPROXIMATE; ACTUAL MAY VARY. DRAWING SHALL NOT BE USED OUTSIDE THE CONTEXT OF THE REPORT FOR WHICH IT WAS GENERATED.

PROJECT NAME
 MEHLVILLE SCHOOL DISTRICT
 MEHLVILLE HIGH SCHOOL - 3RD FLOOR
 ST. LOUIS, MISSOURI

LEAD DRINKING WATER SAMPLING PLAN



JOB NUMBER
 2016-0860.2T
 FIGURE DATE
 02/27/2024
 DRAWN BY
 JTM
 CHECKED BY
 BLL
 FIGURE
 3



MHS-69
 MHS-68

MHS-67
 MHS-66

MHS-65
 MHS-64

MHS-63

MHS-62

MHS-61

MHS-60

MHS-59
 MHS-58



Pace Analytical Services, LLC

2231 W. Altorfer Drive

Peoria, IL 61615

(800)752-6651

January 29, 2024

Glenn Grissom
SCI Engineering
130 Point W. Blvd.
St. Chariles, MO 63301

RE: 2016-0860-2T - MEHLVILLE HS

Dear Glenn Grissom:

Please find enclosed the analytical results for the **69** sample(s) the laboratory received on **1/2/24 3:35 pm** and logged in under work order **HA00053**. All testing is performed according to our current TNI accreditations unless otherwise noted. This report cannot be reproduced, except in full, without the written permission of Pace Analytical Services, LLC.

If you have any questions regarding your report, please contact your project manager. Quality and timely data is of the utmost importance to us.

Pace Analytical Services appreciates the opportunity to provide you with analytical expertise. We are always trying to improve our customer service and we welcome you to contact the General Manager, Lisa Grant, with any feedback you have about your experience with our laboratory at 309-683-1764 or lisa.grant@pacelabs.com.

A handwritten signature in black ink, appearing to read "Chenise Lambert-Sykes".

Chenise Lambert-Sykes
Project Manager
(314)432-0550
Chenise.Lambert-Sykes@pacelabs.com



SAMPLE RECEIPT CHECK LIST

Items not applicable will be marked as in compliance

Work Order HA00053

YES	Samples received within temperature compliance when applicable
YES	COC present upon sample receipt
YES	COC completed & legible
YES	Sampler name & signature present
YES	Unique sample IDs assigned
YES	Sample collection location recorded
YES	Date & time collected recorded on COC
YES	Relinquished by client signature on COC
YES	COC & labels match
YES	Sample labels are legible
YES	Appropriate bottle(s) received
YES	Sufficient sample volume received
YES	Sample containers received undamaged
NO	Zero headspace, <6 mm present in VOA vials
NO	Trip blank(s) received
YES	All non-field analyses received within holding times
NO	Short hold time analysis
YES	Current PDC COC submitted
NO	Case narrative provided



Pace Analytical Services, LLC

2231 W. Altorfer Drive

Peoria, IL 61615

(800)752-6651

Case Narrative

The drinking water lead analysis was performed at Pace-Ormond Beach, FL. Please refer to the subcontract section of the report for details.



ANALYTICAL RESULTS

Sample: HA00053-01
Name: MHS - 01
Matrix: Drinking Water - Grab

Sampled: 12/22/23 17:24
Received: 01/02/24 15:35

Table with 10 columns: Parameter, Result, Unit, Qualifier, Prepared, Dilution, MRL, Analyzed, Analyst, Method

Subcontracted Analysis - Pace Analytical - Ormond Beach

Table row for Lead: Result < 1, Unit ug/L, Prepared 12/22/23 17:24, Dilution 1, MRL 1, Analyst PACE, Method EPA 200.8 REV 5.4

Sample: HA00053-02
Name: MHS - 02
Matrix: Drinking Water - Grab

Sampled: 12/22/23 17:28
Received: 01/02/24 15:35

Table with 10 columns: Parameter, Result, Unit, Qualifier, Prepared, Dilution, MRL, Analyzed, Analyst, Method

Subcontracted Analysis - Pace Analytical - Ormond Beach

Table row for Lead: Result 1.3, Unit ug/L, Prepared 12/22/23 17:28, Dilution 1, MRL 1, Analyst PACE, Method EPA 200.8 REV 5.4

Sample: HA00053-03
Name: MHS - 03
Matrix: Drinking Water - Grab

Sampled: 12/22/23 17:29
Received: 01/02/24 15:35

Table with 10 columns: Parameter, Result, Unit, Qualifier, Prepared, Dilution, MRL, Analyzed, Analyst, Method

Subcontracted Analysis - Pace Analytical - Ormond Beach

Table row for Lead: Result < 1, Unit ug/L, Prepared 12/22/23 17:29, Dilution 1, MRL 1, Analyst PACE, Method EPA 200.8 REV 5.4

Sample: HA00053-04
Name: MHS - 04
Matrix: Drinking Water - Grab

Sampled: 12/22/23 17:30
Received: 01/02/24 15:35

Table with 10 columns: Parameter, Result, Unit, Qualifier, Prepared, Dilution, MRL, Analyzed, Analyst, Method

Subcontracted Analysis - Pace Analytical - Ormond Beach

Table row for Lead: Result 2.3, Unit ug/L, Prepared 12/22/23 17:30, Dilution 1, MRL 1, Analyst PACE, Method EPA 200.8 REV 5.4



ANALYTICAL RESULTS

Sample: HA00053-05
Name: MHS - 05
Matrix: Drinking Water - Grab

Sampled: 12/22/23 17:32
Received: 01/02/24 15:35

Table with 10 columns: Parameter, Result, Unit, Qualifier, Prepared, Dilution, MRL, Analyzed, Analyst, Method

Subcontracted Analysis - Pace Analytical - Ormond Beach

Table row for Lead: Result < 1, Unit ug/L, Prepared 12/22/23 17:32, Dilution 1, MRL 1, Analyst PACE, Method EPA 200.8 REV 5.4

Sample: HA00053-06
Name: MHS - 06
Matrix: Drinking Water - Grab

Sampled: 12/22/23 17:34
Received: 01/02/24 15:35

Table with 10 columns: Parameter, Result, Unit, Qualifier, Prepared, Dilution, MRL, Analyzed, Analyst, Method

Subcontracted Analysis - Pace Analytical - Ormond Beach

Table row for Lead: Result < 1, Unit ug/L, Prepared 12/22/23 17:34, Dilution 1, MRL 1, Analyst PACE, Method EPA 200.8 REV 5.4

Sample: HA00053-07
Name: MHS - 07
Matrix: Drinking Water - Grab

Sampled: 12/22/23 17:35
Received: 01/02/24 15:35

Table with 10 columns: Parameter, Result, Unit, Qualifier, Prepared, Dilution, MRL, Analyzed, Analyst, Method

Subcontracted Analysis - Pace Analytical - Ormond Beach

Table row for Lead: Result 1.7, Unit ug/L, Prepared 12/22/23 17:35, Dilution 1, MRL 1, Analyst PACE, Method EPA 200.8 REV 5.4

Sample: HA00053-08
Name: MHS - 08
Matrix: Drinking Water - Grab

Sampled: 12/22/23 17:37
Received: 01/02/24 15:35

Table with 10 columns: Parameter, Result, Unit, Qualifier, Prepared, Dilution, MRL, Analyzed, Analyst, Method

Subcontracted Analysis - Pace Analytical - Ormond Beach

Table row for Lead: Result 1.4, Unit ug/L, Prepared 12/22/23 17:37, Dilution 1, MRL 1, Analyst PACE, Method EPA 200.8 REV 5.4



ANALYTICAL RESULTS

Sample: HA00053-09
Name: MHS - 09
Matrix: Drinking Water - Grab

Sampled: 12/22/23 17:38
Received: 01/02/24 15:35

Table with 10 columns: Parameter, Result, Unit, Qualifier, Prepared, Dilution, MRL, Analyzed, Analyst, Method

Subcontracted Analysis - Pace Analytical - Ormond Beach

Table row for Lead: Result 1.8, Unit ug/L, Prepared 12/22/23 17:38, Dilution 1, MRL 1, Analyst PACE, Method EPA 200.8 REV 5.4

Sample: HA00053-10
Name: MHS - 10
Matrix: Drinking Water - Grab

Sampled: 12/22/23 17:38
Received: 01/02/24 15:35

Table with 10 columns: Parameter, Result, Unit, Qualifier, Prepared, Dilution, MRL, Analyzed, Analyst, Method

Subcontracted Analysis - Pace Analytical - Ormond Beach

Table row for Lead: Result 1.8, Unit ug/L, Prepared 12/22/23 17:38, Dilution 1, MRL 1, Analyst PACE, Method EPA 200.8 REV 5.4

Sample: HA00053-11
Name: MHS - 11
Matrix: Drinking Water - Grab

Sampled: 12/22/23 17:40
Received: 01/02/24 15:35

Table with 10 columns: Parameter, Result, Unit, Qualifier, Prepared, Dilution, MRL, Analyzed, Analyst, Method

Subcontracted Analysis - Pace Analytical - Ormond Beach

Table row for Lead: Result 3.2, Unit ug/L, Prepared 12/22/23 17:40, Dilution 1, MRL 1, Analyst PACE, Method EPA 200.8 REV 5.4

Sample: HA00053-12
Name: MHS - 12
Matrix: Drinking Water - Grab

Sampled: 12/22/23 17:41
Received: 01/02/24 15:35

Table with 10 columns: Parameter, Result, Unit, Qualifier, Prepared, Dilution, MRL, Analyzed, Analyst, Method

Subcontracted Analysis - Pace Analytical - Ormond Beach

Table row for Lead: Result < 1, Unit ug/L, Prepared 12/22/23 17:41, Dilution 1, MRL 1, Analyst PACE, Method EPA 200.8 REV 5.4



ANALYTICAL RESULTS

Sample: HA00053-13
Name: MHS - 13
Matrix: Drinking Water - Grab

Sampled: 12/22/23 17:45
Received: 01/02/24 15:35

Table with 10 columns: Parameter, Result, Unit, Qualifier, Prepared, Dilution, MRL, Analyzed, Analyst, Method

Subcontracted Analysis - Pace Analytical - Ormond Beach

Table row for Lead: Result 9.3, Unit ug/L, Prepared 12/22/23 17:45, Dilution 1, MRL 1, Analyst PACE, Method EPA 200.8 REV 5.4

Sample: HA00053-14
Name: MHS - 14
Matrix: Drinking Water - Grab

Sampled: 12/22/23 17:45
Received: 01/02/24 15:35

Table with 10 columns: Parameter, Result, Unit, Qualifier, Prepared, Dilution, MRL, Analyzed, Analyst, Method

Subcontracted Analysis - Pace Analytical - Ormond Beach

Table row for Lead: Result < 1, Unit ug/L, Prepared 12/22/23 17:47, Dilution 1, MRL 1, Analyst PACE, Method EPA 200.8 REV 5.4

Sample: HA00053-15
Name: MHS - 15
Matrix: Drinking Water - Grab

Sampled: 12/22/23 17:48
Received: 01/02/24 15:35

Table with 10 columns: Parameter, Result, Unit, Qualifier, Prepared, Dilution, MRL, Analyzed, Analyst, Method

Subcontracted Analysis - Pace Analytical - Ormond Beach

Table row for Lead: Result < 1, Unit ug/L, Prepared 12/22/23 17:48, Dilution 1, MRL 1, Analyst PACE, Method EPA 200.8 REV 5.4

Sample: HA00053-16
Name: MHS - 16
Matrix: Drinking Water - Grab

Sampled: 12/22/23 17:55
Received: 01/02/24 15:35

Table with 10 columns: Parameter, Result, Unit, Qualifier, Prepared, Dilution, MRL, Analyzed, Analyst, Method

Subcontracted Analysis - Pace Analytical - Ormond Beach

Table row for Lead: Result 23.7, Unit ug/L, Prepared 12/22/23 17:55, Dilution 1, MRL 1, Analyst PACE, Method EPA 200.8 REV 5.4



ANALYTICAL RESULTS

Sample: HA00053-17
Name: MHS - 17
Matrix: Drinking Water - Grab

Sampled: 12/22/23 17:58
Received: 01/02/24 15:35

Table with 10 columns: Parameter, Result, Unit, Qualifier, Prepared, Dilution, MRL, Analyzed, Analyst, Method

Subcontracted Analysis - Pace Analytical - Ormond Beach

Table row for Lead: < 1 ug/L, 12/22/23 17:58, 1, 1, PACE, EPA 200.8 REV 5.4

Sample: HA00053-18
Name: MHS - 18
Matrix: Drinking Water - Grab

Sampled: 12/22/23 17:58
Received: 01/02/24 15:35

Table with 10 columns: Parameter, Result, Unit, Qualifier, Prepared, Dilution, MRL, Analyzed, Analyst, Method

Subcontracted Analysis - Pace Analytical - Ormond Beach

Table row for Lead: < 1 ug/L, 12/22/23 17:58, 1, 1, PACE, EPA 200.8 REV 5.4

Sample: HA00053-19
Name: MHS - 19
Matrix: Drinking Water - Grab

Sampled: 12/22/23 18:00
Received: 01/02/24 15:35

Table with 10 columns: Parameter, Result, Unit, Qualifier, Prepared, Dilution, MRL, Analyzed, Analyst, Method

Subcontracted Analysis - Pace Analytical - Ormond Beach

Table row for Lead: 6.7 ug/L, 12/22/23 18:00, 1, 1, PACE, EPA 200.8 REV 5.4

Sample: HA00053-20
Name: MHS - 20
Matrix: Drinking Water - Grab

Sampled: 12/22/23 18:01
Received: 01/02/24 15:35

Table with 10 columns: Parameter, Result, Unit, Qualifier, Prepared, Dilution, MRL, Analyzed, Analyst, Method

Subcontracted Analysis - Pace Analytical - Ormond Beach

Table row for Lead: 3.9 ug/L, 12/22/23 18:01, 1, 1, PACE, EPA 200.8 REV 5.4



ANALYTICAL RESULTS

Sample: HA00053-21
Name: MHS - 21
Matrix: Drinking Water - Grab

Sampled: 12/22/23 18:04
Received: 01/02/24 15:35

Table with 10 columns: Parameter, Result, Unit, Qualifier, Prepared, Dilution, MRL, Analyzed, Analyst, Method

Subcontracted Analysis - Pace Analytical - Ormond Beach

Table row for Lead: Result < 1, Unit ug/L, Prepared 12/22/23 18:04, Dilution 1, MRL 1, Analyst PACE, Method EPA 200.8 REV 5.4

Sample: HA00053-22
Name: MHS - 22
Matrix: Drinking Water - Grab

Sampled: 12/22/23 18:06
Received: 01/02/24 15:35

Table with 10 columns: Parameter, Result, Unit, Qualifier, Prepared, Dilution, MRL, Analyzed, Analyst, Method

Subcontracted Analysis - Pace Analytical - Ormond Beach

Table row for Lead: Result 1.1, Unit ug/L, Prepared 12/22/23 18:06, Dilution 1, MRL 1, Analyst PACE, Method EPA 200.8 REV 5.4

Sample: HA00053-23
Name: MHS - 23
Matrix: Drinking Water - Grab

Sampled: 12/22/23 18:08
Received: 01/02/24 15:35

Table with 10 columns: Parameter, Result, Unit, Qualifier, Prepared, Dilution, MRL, Analyzed, Analyst, Method

Subcontracted Analysis - Pace Analytical - Ormond Beach

Table row for Lead: Result 11.0, Unit ug/L, Prepared 12/22/23 18:08, Dilution 1, MRL 1, Analyst PACE, Method EPA 200.8 REV 5.4

Sample: HA00053-24
Name: MHS - 24
Matrix: Drinking Water - Grab

Sampled: 12/22/23 18:10
Received: 01/02/24 15:35

Table with 10 columns: Parameter, Result, Unit, Qualifier, Prepared, Dilution, MRL, Analyzed, Analyst, Method

Subcontracted Analysis - Pace Analytical - Ormond Beach

Table row for Lead: Result 1.1, Unit ug/L, Prepared 12/22/23 18:10, Dilution 1, MRL 1, Analyst PACE, Method EPA 200.8 REV 5.4



ANALYTICAL RESULTS

Sample: HA00053-25
Name: MHS - 25
Matrix: Drinking Water - Grab

Sampled: 12/22/23 18:12
Received: 01/02/24 15:35

Table with 10 columns: Parameter, Result, Unit, Qualifier, Prepared, Dilution, MRL, Analyzed, Analyst, Method

Subcontracted Analysis - Pace Analytical - Ormond Beach

Table row for Lead: Result 2.3, Unit ug/L, Prepared 12/22/23 18:12, Dilution 1, MRL 1, Analyst PACE, Method EPA 200.8 REV 5.4

Sample: HA00053-26
Name: MHS - 26
Matrix: Drinking Water - Grab

Sampled: 12/22/23 18:13
Received: 01/02/24 15:35

Table with 10 columns: Parameter, Result, Unit, Qualifier, Prepared, Dilution, MRL, Analyzed, Analyst, Method

Subcontracted Analysis - Pace Analytical - Ormond Beach

Table row for Lead: Result < 1, Unit ug/L, Prepared 12/22/23 18:13, Dilution 1, MRL 1, Analyst PACE, Method EPA 200.8 REV 5.4

Sample: HA00053-27
Name: MHS - 27
Matrix: Drinking Water - Grab

Sampled: 12/22/23 18:14
Received: 01/02/24 15:35

Table with 10 columns: Parameter, Result, Unit, Qualifier, Prepared, Dilution, MRL, Analyzed, Analyst, Method

Subcontracted Analysis - Pace Analytical - Ormond Beach

Table row for Lead: Result < 1, Unit ug/L, Prepared 12/22/23 18:14, Dilution 1, MRL 1, Analyst PACE, Method EPA 200.8 REV 5.4

Sample: HA00053-28
Name: MHS - 28
Matrix: Drinking Water - Grab

Sampled: 12/22/23 18:15
Received: 01/02/24 15:35

Table with 10 columns: Parameter, Result, Unit, Qualifier, Prepared, Dilution, MRL, Analyzed, Analyst, Method

Subcontracted Analysis - Pace Analytical - Ormond Beach

Table row for Lead: Result < 1, Unit ug/L, Prepared 12/22/23 18:15, Dilution 1, MRL 1, Analyst PACE, Method EPA 200.8 REV 5.4



ANALYTICAL RESULTS

Sample: HA00053-29
Name: MHS - 29
Matrix: Drinking Water - Grab

Sampled: 12/22/23 18:16
Received: 01/02/24 15:35

Table with 10 columns: Parameter, Result, Unit, Qualifier, Prepared, Dilution, MRL, Analyzed, Analyst, Method

Subcontracted Analysis - Pace Analytical - Ormond Beach

Table row for Lead: < 1 ug/L, 12/22/23 18:16, 1, 1, PACE, EPA 200.8 REV 5.4

Sample: HA00053-30
Name: MHS - 30
Matrix: Drinking Water - Grab

Sampled: 12/22/23 18:17
Received: 01/02/24 15:35

Table with 10 columns: Parameter, Result, Unit, Qualifier, Prepared, Dilution, MRL, Analyzed, Analyst, Method

Subcontracted Analysis - Pace Analytical - Ormond Beach

Table row for Lead: < 1 ug/L, 12/22/23 18:17, 1, 1, PACE, EPA 200.8 REV 5.4

Sample: HA00053-31
Name: MHS - 31
Matrix: Drinking Water - Grab

Sampled: 12/22/23 18:20
Received: 01/02/24 15:35

Table with 10 columns: Parameter, Result, Unit, Qualifier, Prepared, Dilution, MRL, Analyzed, Analyst, Method

Subcontracted Analysis - Pace Analytical - Ormond Beach

Table row for Lead: < 1 ug/L, 12/22/23 18:20, 1, 1, PACE, EPA 200.8 REV 5.4

Sample: HA00053-32
Name: MHS - 32
Matrix: Drinking Water - Grab

Sampled: 12/22/23 18:21
Received: 01/02/24 15:35

Table with 10 columns: Parameter, Result, Unit, Qualifier, Prepared, Dilution, MRL, Analyzed, Analyst, Method

Subcontracted Analysis - Pace Analytical - Ormond Beach

Table row for Lead: < 1 ug/L, 12/22/23 18:21, 1, 1, PACE, EPA 200.8 REV 5.4



ANALYTICAL RESULTS

Sample: HA00053-33
Name: MHS - 33
Matrix: Drinking Water - Grab

Sampled: 12/22/23 18:21
Received: 01/02/24 15:35

Table with 10 columns: Parameter, Result, Unit, Qualifier, Prepared, Dilution, MRL, Analyzed, Analyst, Method

Subcontracted Analysis - Pace Analytical - Ormond Beach

Table row for Lead: Result < 1, Unit ug/L, Prepared 12/22/23 18:21, Dilution 1, MRL 1, Analyst PACE, Method EPA 200.8 REV 5.4

Sample: HA00053-34
Name: MHS - 34
Matrix: Drinking Water - Grab

Sampled: 12/22/23 18:22
Received: 01/02/24 15:35

Table with 10 columns: Parameter, Result, Unit, Qualifier, Prepared, Dilution, MRL, Analyzed, Analyst, Method

Subcontracted Analysis - Pace Analytical - Ormond Beach

Table row for Lead: Result < 1, Unit ug/L, Prepared 12/22/23 18:22, Dilution 1, MRL 1, Analyst PACE, Method EPA 200.8 REV 5.4

Sample: HA00053-35
Name: MHS - 35
Matrix: Drinking Water - Grab

Sampled: 12/22/23 18:23
Received: 01/02/24 15:35

Table with 10 columns: Parameter, Result, Unit, Qualifier, Prepared, Dilution, MRL, Analyzed, Analyst, Method

Subcontracted Analysis - Pace Analytical - Ormond Beach

Table row for Lead: Result 1.2, Unit ug/L, Prepared 12/22/23 18:23, Dilution 1, MRL 1, Analyst PACE, Method EPA 200.8 REV 5.4

Sample: HA00053-36
Name: MHS - 36
Matrix: Drinking Water - Grab

Sampled: 12/22/23 18:25
Received: 01/02/24 15:35

Table with 10 columns: Parameter, Result, Unit, Qualifier, Prepared, Dilution, MRL, Analyzed, Analyst, Method

Subcontracted Analysis - Pace Analytical - Ormond Beach

Table row for Lead: Result < 1, Unit ug/L, Prepared 12/22/23 18:25, Dilution 1, MRL 1, Analyst PACE, Method EPA 200.8 REV 5.4



ANALYTICAL RESULTS

Sample: HA00053-37
Name: MHS - 37
Matrix: Drinking Water - Grab

Sampled: 12/22/23 18:27
Received: 01/02/24 15:35

Table with 10 columns: Parameter, Result, Unit, Qualifier, Prepared, Dilution, MRL, Analyzed, Analyst, Method

Subcontracted Analysis - Pace Analytical - Ormond Beach

Table row for Lead: < 1 ug/L, 12/22/23 18:27, 1, 1, PACE, EPA 200.8 REV 5.4

Sample: HA00053-38
Name: MHS - 38
Matrix: Drinking Water - Grab

Sampled: 12/22/23 18:32
Received: 01/02/24 15:35

Table with 10 columns: Parameter, Result, Unit, Qualifier, Prepared, Dilution, MRL, Analyzed, Analyst, Method

Subcontracted Analysis - Pace Analytical - Ormond Beach

Table row for Lead: < 1 ug/L, 12/22/23 18:32, 1, 1, PACE, EPA 200.8 REV 5.4

Sample: HA00053-39
Name: MHS - 39
Matrix: Drinking Water - Grab

Sampled: 12/22/23 18:34
Received: 01/02/24 15:35

Table with 10 columns: Parameter, Result, Unit, Qualifier, Prepared, Dilution, MRL, Analyzed, Analyst, Method

Subcontracted Analysis - Pace Analytical - Ormond Beach

Table row for Lead: < 1 ug/L, 12/22/23 18:34, 1, 1, PACE, EPA 200.8 REV 5.4

Sample: HA00053-40
Name: MHS - 40
Matrix: Drinking Water - Grab

Sampled: 12/22/23 18:35
Received: 01/02/24 15:35

Table with 10 columns: Parameter, Result, Unit, Qualifier, Prepared, Dilution, MRL, Analyzed, Analyst, Method

Subcontracted Analysis - Pace Analytical - Ormond Beach

Table row for Lead: < 1 ug/L, 12/22/23 18:35, 1, 1, PACE, EPA 200.8 REV 5.4



ANALYTICAL RESULTS

Sample: HA00053-41
Name: MHS - 41
Matrix: Drinking Water - Grab

Sampled: 12/22/23 18:37
Received: 01/02/24 15:35

Table with 10 columns: Parameter, Result, Unit, Qualifier, Prepared, Dilution, MRL, Analyzed, Analyst, Method

Subcontracted Analysis - Pace Analytical - Ormond Beach

Table row for Lead: < 1 ug/L, 12/22/23 18:37, 1, 1, PACE, EPA 200.8 REV 5.4

Sample: HA00053-42
Name: MHS - 42
Matrix: Drinking Water - Grab

Sampled: 12/22/23 18:38
Received: 01/02/24 15:35

Table with 10 columns: Parameter, Result, Unit, Qualifier, Prepared, Dilution, MRL, Analyzed, Analyst, Method

Subcontracted Analysis - Pace Analytical - Ormond Beach

Table row for Lead: < 1 ug/L, 12/22/23 18:38, 1, 1, PACE, EPA 200.8 REV 5.4

Sample: HA00053-43
Name: MHS - 43
Matrix: Drinking Water - Grab

Sampled: 12/22/23 18:40
Received: 01/02/24 15:35

Table with 10 columns: Parameter, Result, Unit, Qualifier, Prepared, Dilution, MRL, Analyzed, Analyst, Method

Subcontracted Analysis - Pace Analytical - Ormond Beach

Table row for Lead: < 1 ug/L, 12/22/23 18:40, 1, 1, PACE, EPA 200.8 REV 5.4

Sample: HA00053-44
Name: MHS - 44
Matrix: Drinking Water - Grab

Sampled: 12/22/23 18:46
Received: 01/02/24 15:35

Table with 10 columns: Parameter, Result, Unit, Qualifier, Prepared, Dilution, MRL, Analyzed, Analyst, Method

Subcontracted Analysis - Pace Analytical - Ormond Beach

Table row for Lead: < 1 ug/L, 12/22/23 18:46, 1, 1, PACE, EPA 200.8 REV 5.4



ANALYTICAL RESULTS

Sample: HA00053-45
Name: MHS - 45
Matrix: Drinking Water - Grab

Sampled: 12/22/23 18:48
Received: 01/02/24 15:35

Table with 10 columns: Parameter, Result, Unit, Qualifier, Prepared, Dilution, MRL, Analyzed, Analyst, Method

Subcontracted Analysis - Pace Analytical - Ormond Beach

Table row for Lead: < 1 ug/L, 12/22/23 18:48, 1, 1, PACE, EPA 200.8 REV 5.4

Sample: HA00053-46
Name: MHS - 46
Matrix: Drinking Water - Grab

Sampled: 12/22/23 18:51
Received: 01/02/24 15:35

Table with 10 columns: Parameter, Result, Unit, Qualifier, Prepared, Dilution, MRL, Analyzed, Analyst, Method

Subcontracted Analysis - Pace Analytical - Ormond Beach

Table row for Lead: < 1 ug/L, 12/22/23 18:51, 1, 1, PACE, EPA 200.8 REV 5.4

Sample: HA00053-47
Name: MHS - 47
Matrix: Drinking Water - Grab

Sampled: 12/22/23 18:52
Received: 01/02/24 15:35

Table with 10 columns: Parameter, Result, Unit, Qualifier, Prepared, Dilution, MRL, Analyzed, Analyst, Method

Subcontracted Analysis - Pace Analytical - Ormond Beach

Table row for Lead: < 1 ug/L, 12/22/23 18:52, 1, 1, PACE, EPA 200.8 REV 5.4

Sample: HA00053-48
Name: MHS - 48
Matrix: Drinking Water - Grab

Sampled: 12/22/23 18:53
Received: 01/02/24 15:35

Table with 10 columns: Parameter, Result, Unit, Qualifier, Prepared, Dilution, MRL, Analyzed, Analyst, Method

Subcontracted Analysis - Pace Analytical - Ormond Beach

Table row for Lead: < 1 ug/L, 12/22/23 18:53, 1, 1, PACE, EPA 200.8 REV 5.4



ANALYTICAL RESULTS

Sample: HA00053-49
Name: MHS - 49
Matrix: Drinking Water - Grab

Sampled: 12/22/23 18:54
Received: 01/02/24 15:35

Table with 10 columns: Parameter, Result, Unit, Qualifier, Prepared, Dilution, MRL, Analyzed, Analyst, Method

Subcontracted Analysis - Pace Analytical - Ormond Beach

Table row for Lead: Result < 1, Unit ug/L, Prepared 12/22/23 18:54, Dilution 1, MRL 1, Analyst PACE, Method EPA 200.8 REV 5.4

Sample: HA00053-50
Name: MHS - 50
Matrix: Drinking Water - Grab

Sampled: 12/22/23 18:57
Received: 01/02/24 15:35

Table with 10 columns: Parameter, Result, Unit, Qualifier, Prepared, Dilution, MRL, Analyzed, Analyst, Method

Subcontracted Analysis - Pace Analytical - Ormond Beach

Table row for Lead: Result 1.4, Unit ug/L, Prepared 12/22/23 18:57, Dilution 1, MRL 1, Analyst PACE, Method EPA 200.8 REV 5.4

Sample: HA00053-51
Name: MHS - 51
Matrix: Drinking Water - Grab

Sampled: 12/22/23 18:59
Received: 01/02/24 15:35

Table with 10 columns: Parameter, Result, Unit, Qualifier, Prepared, Dilution, MRL, Analyzed, Analyst, Method

Subcontracted Analysis - Pace Analytical - Ormond Beach

Table row for Lead: Result 3.2, Unit ug/L, Prepared 12/22/23 18:59, Dilution 1, MRL 1, Analyst PACE, Method EPA 200.8 REV 5.4

Sample: HA00053-52
Name: MHS - 52
Matrix: Drinking Water - Grab

Sampled: 12/22/23 19:01
Received: 01/02/24 15:35

Table with 10 columns: Parameter, Result, Unit, Qualifier, Prepared, Dilution, MRL, Analyzed, Analyst, Method

Subcontracted Analysis - Pace Analytical - Ormond Beach

Table row for Lead: Result < 1, Unit ug/L, Prepared 12/22/23 19:01, Dilution 1, MRL 1, Analyst PACE, Method EPA 200.8 REV 5.4



ANALYTICAL RESULTS

Sample: HA00053-53
Name: MHS - 53
Matrix: Drinking Water - Grab

Sampled: 12/22/23 19:02

Received: 01/02/24 15:35

Table header: Parameter, Result, Unit, Qualifier, Prepared, Dilution, MRL, Analyzed, Analyst, Method

Subcontracted Analysis - Pace Analytical - Ormond Beach

Table row: Lead, < 1, ug/L, 12/22/23 19:02, 1, 1, PACE, EPA 200.8 REV 5.4

Sample: HA00053-54
Name: MHS - 54
Matrix: Drinking Water - Grab

Sampled: 12/22/23 19:03

Received: 01/02/24 15:35

Table header: Parameter, Result, Unit, Qualifier, Prepared, Dilution, MRL, Analyzed, Analyst, Method

Subcontracted Analysis - Pace Analytical - Ormond Beach

Table row: Lead, < 1, ug/L, 12/22/23 19:03, 1, 1, PACE, EPA 200.8 REV 5.4

Sample: HA00053-55
Name: MHS - 55
Matrix: Drinking Water - Grab

Sampled: 12/22/23 19:05

Received: 01/02/24 15:35

Table header: Parameter, Result, Unit, Qualifier, Prepared, Dilution, MRL, Analyzed, Analyst, Method

Subcontracted Analysis - Pace Analytical - Ormond Beach

Table row: Lead, < 1, ug/L, 12/22/23 19:05, 1, 1, PACE, EPA 200.8 REV 5.4

Sample: HA00053-56
Name: MHS - 56
Matrix: Drinking Water - Grab

Sampled: 12/22/23 19:06

Received: 01/02/24 15:35

Table header: Parameter, Result, Unit, Qualifier, Prepared, Dilution, MRL, Analyzed, Analyst, Method

Subcontracted Analysis - Pace Analytical - Ormond Beach

Table row: Lead, 138, ug/L, 12/22/23 19:06, 1, 1, PACE, EPA 200.8 REV 5.4



ANALYTICAL RESULTS

Sample: HA00053-57
Name: MHS - 57
Matrix: Drinking Water - Grab

Sampled: 12/22/23 19:08
Received: 01/02/24 15:35

Table with 10 columns: Parameter, Result, Unit, Qualifier, Prepared, Dilution, MRL, Analyzed, Analyst, Method

Subcontracted Analysis - Pace Analytical - Ormond Beach

Table row for Lead: < 1 ug/L, 12/22/23 19:08, 1, 1, PACE, EPA 200.8 REV 5.4

Sample: HA00053-58
Name: MHS - 58
Matrix: Drinking Water - Grab

Sampled: 12/22/23 19:19
Received: 01/02/24 15:35

Table with 10 columns: Parameter, Result, Unit, Qualifier, Prepared, Dilution, MRL, Analyzed, Analyst, Method

Subcontracted Analysis - Pace Analytical - Ormond Beach

Table row for Lead: < 1 ug/L, 12/22/23 19:19, 1, 1, PACE, EPA 200.8 REV 5.4

Sample: HA00053-59
Name: MHS - 59
Matrix: Drinking Water - Grab

Sampled: 12/22/23 19:20
Received: 01/02/24 15:35

Table with 10 columns: Parameter, Result, Unit, Qualifier, Prepared, Dilution, MRL, Analyzed, Analyst, Method

Subcontracted Analysis - Pace Analytical - Ormond Beach

Table row for Lead: < 1 ug/L, 12/22/23 19:20, 1, 1, PACE, EPA 200.8 REV 5.4

Sample: HA00053-60
Name: MHS - 60
Matrix: Drinking Water - Grab

Sampled: 12/22/23 19:21
Received: 01/02/24 15:35

Table with 10 columns: Parameter, Result, Unit, Qualifier, Prepared, Dilution, MRL, Analyzed, Analyst, Method

Subcontracted Analysis - Pace Analytical - Ormond Beach

Table row for Lead: < 1 ug/L, 12/22/23 19:21, 1, 1, PACE, EPA 200.8 REV 5.4



ANALYTICAL RESULTS

Sample: HA00053-61
Name: MHS - 61
Matrix: Drinking Water - Grab

Sampled: 12/22/23 19:23
Received: 01/02/24 15:35

Table with 10 columns: Parameter, Result, Unit, Qualifier, Prepared, Dilution, MRL, Analyzed, Analyst, Method

Subcontracted Analysis - Pace Analytical - Ormond Beach

Table row for Lead: < 1 ug/L, 12/22/23 19:23, 1, 1, PACE, EPA 200.8 REV 5.4

Sample: HA00053-62
Name: MHS - 62
Matrix: Drinking Water - Grab

Sampled: 12/22/23 19:24
Received: 01/02/24 15:35

Table with 10 columns: Parameter, Result, Unit, Qualifier, Prepared, Dilution, MRL, Analyzed, Analyst, Method

Subcontracted Analysis - Pace Analytical - Ormond Beach

Table row for Lead: < 1 ug/L, 12/22/23 19:24, 1, 1, PACE, EPA 200.8 REV 5.4

Sample: HA00053-63
Name: MHS - 63
Matrix: Drinking Water - Grab

Sampled: 12/22/23 19:26
Received: 01/02/24 15:35

Table with 10 columns: Parameter, Result, Unit, Qualifier, Prepared, Dilution, MRL, Analyzed, Analyst, Method

Subcontracted Analysis - Pace Analytical - Ormond Beach

Table row for Lead: < 1 ug/L, 12/22/23 19:26, 1, 1, PACE, EPA 200.8 REV 5.4

Sample: HA00053-64
Name: MHS - 64
Matrix: Drinking Water - Grab

Sampled: 12/22/23 19:28
Received: 01/02/24 15:35

Table with 10 columns: Parameter, Result, Unit, Qualifier, Prepared, Dilution, MRL, Analyzed, Analyst, Method

Subcontracted Analysis - Pace Analytical - Ormond Beach

Table row for Lead: < 1 ug/L, 12/22/23 19:28, 1, 1, PACE, EPA 200.8 REV 5.4



ANALYTICAL RESULTS

Sample: HA00053-65
Name: MHS - 65
Matrix: Drinking Water - Grab

Sampled: 12/22/23 19:28
Received: 01/02/24 15:35

Table with 10 columns: Parameter, Result, Unit, Qualifier, Prepared, Dilution, MRL, Analyzed, Analyst, Method

Subcontracted Analysis - Pace Analytical - Ormond Beach

Table row for Lead: Result < 1, Unit ug/L, Prepared 12/22/23 19:28, Dilution 1, MRL 1, Analyst PACE, Method EPA 200.8 REV 5.4

Sample: HA00053-66
Name: MHS - 66
Matrix: Drinking Water - Grab

Sampled: 12/22/23 19:31
Received: 01/02/24 15:35

Table with 10 columns: Parameter, Result, Unit, Qualifier, Prepared, Dilution, MRL, Analyzed, Analyst, Method

Subcontracted Analysis - Pace Analytical - Ormond Beach

Table row for Lead: Result < 1, Unit ug/L, Prepared 12/22/23 19:31, Dilution 1, MRL 1, Analyst PACE, Method EPA 200.8 REV 5.4

Sample: HA00053-67
Name: MHS - 67
Matrix: Drinking Water - Grab

Sampled: 12/22/23 19:32
Received: 01/02/24 15:35

Table with 10 columns: Parameter, Result, Unit, Qualifier, Prepared, Dilution, MRL, Analyzed, Analyst, Method

Subcontracted Analysis - Pace Analytical - Ormond Beach

Table row for Lead: Result < 1, Unit ug/L, Prepared 12/22/23 19:32, Dilution 1, MRL 1, Analyst PACE, Method EPA 200.8 REV 5.4

Sample: HA00053-68
Name: MHS - 68
Matrix: Drinking Water - Grab

Sampled: 12/22/23 19:35
Received: 01/02/24 15:35

Table with 10 columns: Parameter, Result, Unit, Qualifier, Prepared, Dilution, MRL, Analyzed, Analyst, Method

Subcontracted Analysis - Pace Analytical - Ormond Beach

Table row for Lead: Result 1.2, Unit ug/L, Prepared 12/22/23 19:35, Dilution 1, MRL 1, Analyst PACE, Method EPA 200.8 REV 5.4



ANALYTICAL RESULTS

Sample: HA00053-69
Name: MHS - 69
Matrix: Drinking Water - Grab

Sampled: 12/22/23 19:36
Received: 01/02/24 15:35

Parameter	Result	Unit	Qualifier	Prepared	Dilution	MRL	Analyzed	Analyst	Method
-----------	--------	------	-----------	----------	----------	-----	----------	---------	--------

Subcontracted Analysis - Pace Analytical - Ormond Beach

Lead	1.8	ug/L		12/22/23 19:36	1	1		PACE	EPA 200.8 REV 5.4
------	-----	------	--	----------------	---	---	--	------	-------------------



QC SAMPLE RESULTS

Parameter	Result	Unit	Qual	Spike Level	Source Result	%REC	%REC Limits	RPD	RPD Limit
<u>Batch [none] - DW 200.8 no prep - EPA 200.8 REV 5.4</u>									
BLK (BATCH-BLK1 (Water))				Prepared & Analyzed:					
Lead	< 0.2	ug/L					0-0		0
BS (BATCH-BS1 (Water))				Prepared & Analyzed:					
Lead	< 0.2	ug/L					85-115		20
MS (BATCH-MS1 (Water))				Prepared & Analyzed:					
Lead	< 0.2	ug/L					70-130		20
MSD (BATCH-MSD1 (Water))				Prepared & Analyzed:					
Lead	< 0.2	ug/L					70-130		20



NOTES

Specifications regarding method revisions, method modifications, and calculations used for analysis are available upon request. Please contact your project manager.

* Not a TNI accredited analyte

Certifications

CHI - McHenry, IL - 4314-A W. Crystal Lake Road, McHenry, IL 60050

TNI Accreditation for Drinking Water and Wastewater Fields of Testing through IL EPA Accreditation No. 100279

Illinois Department of Public Health Bacterial Analysis in Drinking Water Approved Laboratory Registry No. 17556

PIA - Peoria, IL - 2231 W. Altorfer Drive, Peoria, IL 61615

TNI Accreditation for Drinking Water, Wastewater, Solid and Hazardous Material Fields of Testing through IL EPA Accreditation No. 100230

Illinois Department of Public Health Bacterial Analysis in Drinking Water Approved Laboratory Registry No. 17553

Drinking Water Certifications/Accreditations: Iowa (240); Kansas (E-10338); Missouri (870)

Wastewater Certifications/Accreditations: Arkansas (88-0677); Iowa (240); Kansas (E-10338)

Solid and Hazardous Material Certifications/Accreditations: Arkansas (88-0677); Iowa (240); Kansas (E-10338)

SPMO - Springfield, MO - 1805 W Sunset Street, Springfield, MO 65807

USEPA DMR-QA Program

STL - Hazelwood, MO - 944 Anglum Rd, Hazelwood, MO 63042

TNI Accreditation for Wastewater, Solid and Hazardous Material Fields of Testing through KS KDHE Certification No. E-10389

TNI Accreditation for Wastewater, Solid and Hazardous Material Fields of Testing through IL EPA Accreditation No. - 200080

Illinois Department of Public Health Bacterial Analysis in Drinking Water Approved Laboratory, Registry No. 171050

Missouri Department of Natural Resources - Certificate of Approval for Microbiological Laboratory Service - No. 1050



Certified by: Chenise Lambert-Sykes, Project Manager



January 08, 2024

Chenise Lambert-Sykes
Pace Analytical Services, Inc - IL/MO
944 Anglum Road
Hazelwood, MO 63042

RE: Project: HA00053
Pace Project No.: 35851645

Dear Chenise Lambert-Sykes:

Enclosed are the analytical results for sample(s) received by the laboratory on January 04, 2024. The results relate only to the samples included in this report. Results reported herein conform to the applicable TNI/NELAC Standards and the laboratory's Quality Manual, where applicable, unless otherwise noted in the body of the report.

The test results provided in this final report were generated by each of the following laboratories within the Pace Network:

- Pace Analytical Services - Ormond Beach

If you have any questions concerning this report, please feel free to contact me.

Sincerely,

Brad Smith
brad.smith@pacelabs.com
(386) 672-5668
Project Manager

Enclosures



REPORT OF LABORATORY ANALYSIS

This report shall not be reproduced, except in full,
without the written consent of Pace Analytical Services, LLC.



CERTIFICATIONS

Project: HA00053

Pace Project No.: 35851645

Pace Analytical Services Ormond Beach

8 East Tower Circle, Ormond Beach, FL 32174

Alaska DEC- CS/UST/LUST

Alabama Certification #: 41320

California Certification# 3096

Colorado Certification: FL NELAC Reciprocity

Connecticut Certification #: PH-0216

Delaware Certification: FL NELAC Reciprocity

DoD-ANAB #:ADE-3199

Florida Certification #: E83079

Georgia Certification #: 955

Guam Certification: FL NELAC Reciprocity

Hawaii Certification: FL NELAC Reciprocity

Illinois Certification #: 200068

Indiana Certification: FL NELAC Reciprocity

Kansas Certification #: E-10383

Kentucky Certification #: 90050

Louisiana Certification #: FL NELAC Reciprocity

Louisiana Environmental Certificate #: 05007

Maine Certification #: FL01264

Maryland Certification: #346

Massachusetts Certification #: M-FL1264

Michigan Certification #: 9911

Mississippi Certification: FL NELAC Reciprocity

Missouri Certification #: 236

Montana Certification #: Cert 0074

Nebraska Certification: NE-OS-28-14

New Hampshire Certification #: 2958

New Jersey Certification #: FL022

New York Certification #: 11608

North Carolina Environmental Certificate #: 667

North Carolina Certification #: 12710

North Dakota Certification #: R-216

Ohio DEP 87780

Oklahoma Certification #: D9947

Pennsylvania Certification #: 68-00547

Puerto Rico Certification #: FL01264

South Carolina Certification: #96042001

Tennessee Certification #: TN02974

Texas Certification: FL NELAC Reciprocity

US Virgin Islands Certification: FL NELAC Reciprocity

Virginia Environmental Certification #: 460165

West Virginia Certification #: 9962C

Wisconsin Certification #: 399079670

Wyoming (EPA Region 8): FL NELAC Reciprocity

REPORT OF LABORATORY ANALYSIS

This report shall not be reproduced, except in full,
without the written consent of Pace Analytical Services, LLC.



SAMPLE ANALYTE COUNT

Project: HA00053

Pace Project No.: 35851645

Lab ID	Sample ID	Method	Analysts	Analytes Reported	Laboratory
35851645001	HA00053-01	EPA 200.8	BSL	1	PASI-O
35851645002	HA00053-02	EPA 200.8	BSL	1	PASI-O
35851645003	HA00053-03	EPA 200.8	BSL	1	PASI-O
35851645004	HA00053-04	EPA 200.8	BSL	1	PASI-O
35851645005	HA00053-05	EPA 200.8	BSL	1	PASI-O
35851645006	HA00053-06	EPA 200.8	BSL	1	PASI-O
35851645007	HA00053-07	EPA 200.8	BSL	1	PASI-O
35851645008	HA00053-08	EPA 200.8	BSL	1	PASI-O
35851645009	HA00053-09	EPA 200.8	BSL	1	PASI-O
35851645010	HA00053-10	EPA 200.8	BSL	1	PASI-O
35851645011	HA00053-11	EPA 200.8	BSL	1	PASI-O
35851645012	HA00053-12	EPA 200.8	BSL	1	PASI-O
35851645013	HA00053-13	EPA 200.8	BSL	1	PASI-O
35851645014	HA00053-14	EPA 200.8	BSL	1	PASI-O
35851645015	HA00053-15	EPA 200.8	BSL	1	PASI-O
35851645016	HA00053-16	EPA 200.8	BSL	1	PASI-O
35851645017	HA00053-17	EPA 200.8	BSL	1	PASI-O
35851645018	HA00053-18	EPA 200.8	BSL	1	PASI-O
35851645019	HA00053-19	EPA 200.8	BSL	1	PASI-O
35851645020	HA00053-20	EPA 200.8	BSL	1	PASI-O
35851645021	HA00053-21	EPA 200.8	BSL	1	PASI-O
35851645022	HA00053-22	EPA 200.8	BSL	1	PASI-O
35851645023	HA00053-23	EPA 200.8	BSL	1	PASI-O
35851645024	HA00053-24	EPA 200.8	BSL	1	PASI-O
35851645025	HA00053-25	EPA 200.8	BSL	1	PASI-O
35851645026	HA00053-26	EPA 200.8	BSL	1	PASI-O
35851645027	HA00053-27	EPA 200.8	BSL	1	PASI-O
35851645028	HA00053-28	EPA 200.8	BSL	1	PASI-O
35851645029	HA00053-29	EPA 200.8	BSL	1	PASI-O
35851645030	HA00053-30	EPA 200.8	BSL	1	PASI-O
35851645031	HA00053-31	EPA 200.8	BSL	1	PASI-O
35851645032	HA00053-32	EPA 200.8	BSL	1	PASI-O
35851645033	HA00053-33	EPA 200.8	BSL	1	PASI-O
35851645034	HA00053-34	EPA 200.8	BSL	1	PASI-O
35851645035	HA00053-35	EPA 200.8	BSL	1	PASI-O
35851645036	HA00053-36	EPA 200.8	BSL	1	PASI-O
35851645037	HA00053-37	EPA 200.8	BSL	1	PASI-O

REPORT OF LABORATORY ANALYSIS

This report shall not be reproduced, except in full, without the written consent of Pace Analytical Services, LLC.



SAMPLE ANALYTE COUNT

Project: HA00053

Pace Project No.: 35851645

Lab ID	Sample ID	Method	Analysts	Analytes Reported	Laboratory
35851645038	HA00053-38	EPA 200.8	BSL	1	PASI-O
35851645039	HA00053-39	EPA 200.8	BSL	1	PASI-O
35851645040	HA00053-40	EPA 200.8	BSL	1	PASI-O
35851645041	HA00053-41	EPA 200.8	BSL	1	PASI-O
35851645042	HA00053-42	EPA 200.8	BSL	1	PASI-O
35851645043	HA00053-43	EPA 200.8	BSL	1	PASI-O
35851645044	HA00053-44	EPA 200.8	BSL	1	PASI-O
35851645045	HA00053-45	EPA 200.8	BSL	1	PASI-O
35851645046	HA00053-46	EPA 200.8	BSL	1	PASI-O
35851645047	HA00053-47	EPA 200.8	BSL	1	PASI-O
35851645048	HA00053-48	EPA 200.8	BSL	1	PASI-O
35851645049	HA00053-49	EPA 200.8	BSL	1	PASI-O
35851645050	HA00053-50	EPA 200.8	BSL	1	PASI-O
35851645051	HA00053-51	EPA 200.8	BSL	1	PASI-O
35851645052	HA00053-52	EPA 200.8	BSL	1	PASI-O
35851645053	HA00053-53	EPA 200.8	BSL	1	PASI-O
35851645054	HA00053-54	EPA 200.8	BSL	1	PASI-O
35851645055	HA00053-55	EPA 200.8	BSL	1	PASI-O
35851645056	HA00053-56	EPA 200.8	BSL	1	PASI-O
35851645057	HA00053-57	EPA 200.8	BSL	1	PASI-O
35851645058	HA00053-58	EPA 200.8	BSL	1	PASI-O
35851645059	HA00053-59	EPA 200.8	BSL	1	PASI-O
35851645060	HA00053-60	EPA 200.8	BSL	1	PASI-O
35851645061	HA00053-61	EPA 200.8	LEC	1	PASI-O
35851645062	HA00053-62	EPA 200.8	LEC	1	PASI-O
35851645063	HA00053-63	EPA 200.8	LEC	1	PASI-O
35851645064	HA00053-64	EPA 200.8	LEC	1	PASI-O
35851645065	HA00053-65	EPA 200.8	LEC	1	PASI-O
35851645066	HA00053-66	EPA 200.8	LEC	1	PASI-O
35851645067	HA00053-67	EPA 200.8	LEC	1	PASI-O
35851645068	HA00053-68	EPA 200.8	LEC	1	PASI-O
35851645069	HA00053-69	EPA 200.8	LEC	1	PASI-O

PASI-O = Pace Analytical Services - Ormond Beach

REPORT OF LABORATORY ANALYSIS

This report shall not be reproduced, except in full, without the written consent of Pace Analytical Services, LLC.



ANALYTICAL RESULTS

Project: HA00053

Pace Project No.: 35851645

Sample: HA00053-01		Lab ID: 35851645001	Collected: 12/22/23 18:24	Received: 01/04/24 10:25	Matrix: Drinking Water			
Parameters	Results	Units	Report Limit	DF	Prepared	Analyzed	CAS No.	Qual
200.8 MET ICPMS Drinking Water		Analytical Method: EPA 200.8 Pace Analytical Services - Ormond Beach						
Lead	ND	ug/L	1.0	1		01/07/24 23:13	7439-92-1	

REPORT OF LABORATORY ANALYSIS

This report shall not be reproduced, except in full,
without the written consent of Pace Analytical Services, LLC.



ANALYTICAL RESULTS

Project: HA00053

Pace Project No.: 35851645

Parameters	Results	Units	Report Limit	DF	Prepared	Analyzed	CAS No.	Qual
Sample: HA00053-02								
Lab ID: 35851645002								
Collected: 12/22/23 18:28								
Received: 01/04/24 10:25								
Matrix: Drinking Water								
200.8 MET ICPMS Drinking Water								
Analytical Method: EPA 200.8								
Pace Analytical Services - Ormond Beach								
Lead	1.3	ug/L	1.0	1		01/07/24 23:15	7439-92-1	

REPORT OF LABORATORY ANALYSIS

This report shall not be reproduced, except in full, without the written consent of Pace Analytical Services, LLC.



ANALYTICAL RESULTS

Project: HA00053

Pace Project No.: 35851645

Sample: HA00053-03		Lab ID: 35851645003	Collected: 12/22/23 18:29	Received: 01/04/24 10:25	Matrix: Drinking Water			
Parameters	Results	Units	Report Limit	DF	Prepared	Analyzed	CAS No.	Qual
200.8 MET ICPMS Drinking Water		Analytical Method: EPA 200.8 Pace Analytical Services - Ormond Beach						
Lead	ND	ug/L	1.0	1		01/07/24 23:16	7439-92-1	

REPORT OF LABORATORY ANALYSIS

This report shall not be reproduced, except in full,
without the written consent of Pace Analytical Services, LLC.



ANALYTICAL RESULTS

Project: HA00053

Pace Project No.: 35851645

Sample: HA00053-04	Lab ID: 35851645004	Collected: 12/22/23 18:30	Received: 01/04/24 10:25	Matrix: Drinking Water				
Parameters	Results	Units	Report Limit	DF	Prepared	Analyzed	CAS No.	Qual
200.8 MET ICPMS Drinking Water	Analytical Method: EPA 200.8 Pace Analytical Services - Ormond Beach							
Lead	2.3	ug/L	1.0	1		01/08/24 09:06	7439-92-1	

REPORT OF LABORATORY ANALYSIS

This report shall not be reproduced, except in full,
without the written consent of Pace Analytical Services, LLC.



ANALYTICAL RESULTS

Project: HA00053

Pace Project No.: 35851645

Sample: HA00053-05		Lab ID: 35851645005	Collected: 12/22/23 18:32	Received: 01/04/24 10:25	Matrix: Drinking Water			
Parameters	Results	Units	Report Limit	DF	Prepared	Analyzed	CAS No.	Qual
200.8 MET ICPMS Drinking Water		Analytical Method: EPA 200.8 Pace Analytical Services - Ormond Beach						
Lead	ND	ug/L	1.0	1		01/08/24 09:10	7439-92-1	

REPORT OF LABORATORY ANALYSIS

This report shall not be reproduced, except in full,
without the written consent of Pace Analytical Services, LLC.



ANALYTICAL RESULTS

Project: HA00053

Pace Project No.: 35851645

Parameters	Results	Units	Report Limit	DF	Prepared	Analyzed	CAS No.	Qual
Sample: HA00053-06								
Lab ID: 35851645006								
Collected: 12/22/23 18:34 Received: 01/04/24 10:25 Matrix: Drinking Water								
200.8 MET ICPMS Drinking Water								
Analytical Method: EPA 200.8								
Pace Analytical Services - Ormond Beach								
Lead	ND	ug/L	1.0	1		01/08/24 09:12	7439-92-1	

REPORT OF LABORATORY ANALYSIS

This report shall not be reproduced, except in full, without the written consent of Pace Analytical Services, LLC.



ANALYTICAL RESULTS

Project: HA00053

Pace Project No.: 35851645

Sample: HA00053-07	Lab ID: 35851645007	Collected: 12/22/23 18:35	Received: 01/04/24 10:25	Matrix: Drinking Water					
Parameters	Results	Units	Report Limit	DF	Prepared	Analyzed	CAS No.	Qual	
200.8 MET ICPMS Drinking Water	Analytical Method: EPA 200.8 Pace Analytical Services - Ormond Beach								
Lead	1.7	ug/L	1.0	1		01/08/24 09:13	7439-92-1		

REPORT OF LABORATORY ANALYSIS

This report shall not be reproduced, except in full,
without the written consent of Pace Analytical Services, LLC.



ANALYTICAL RESULTS

Project: HA00053

Pace Project No.: 35851645

Sample: HA00053-08	Lab ID: 35851645008	Collected: 12/22/23 18:37	Received: 01/04/24 10:25	Matrix: Drinking Water				
Parameters	Results	Units	Report Limit	DF	Prepared	Analyzed	CAS No.	Qual
200.8 MET ICPMS Drinking Water	Analytical Method: EPA 200.8 Pace Analytical Services - Ormond Beach							
Lead	1.4	ug/L	1.0	1		01/08/24 09:14	7439-92-1	

REPORT OF LABORATORY ANALYSIS

This report shall not be reproduced, except in full,
without the written consent of Pace Analytical Services, LLC.



ANALYTICAL RESULTS

Project: HA00053

Pace Project No.: 35851645

Sample: HA00053-09	Lab ID: 35851645009	Collected: 12/22/23 18:38	Received: 01/04/24 10:25	Matrix: Drinking Water				
Parameters	Results	Units	Report Limit	DF	Prepared	Analyzed	CAS No.	Qual
200.8 MET ICPMS Drinking Water	Analytical Method: EPA 200.8 Pace Analytical Services - Ormond Beach							
Lead	1.8	ug/L	1.0	1		01/08/24 09:16	7439-92-1	

REPORT OF LABORATORY ANALYSIS

This report shall not be reproduced, except in full,
without the written consent of Pace Analytical Services, LLC.



ANALYTICAL RESULTS

Project: HA00053

Pace Project No.: 35851645

Sample: HA00053-10	Lab ID: 35851645010	Collected: 12/22/23 18:38	Received: 01/04/24 10:25	Matrix: Drinking Water				
Parameters	Results	Units	Report Limit	DF	Prepared	Analyzed	CAS No.	Qual
200.8 MET ICPMS Drinking Water		Analytical Method: EPA 200.8 Pace Analytical Services - Ormond Beach						
Lead	1.8	ug/L	1.0	1		01/08/24 09:17	7439-92-1	

REPORT OF LABORATORY ANALYSIS

This report shall not be reproduced, except in full,
without the written consent of Pace Analytical Services, LLC.



ANALYTICAL RESULTS

Project: HA00053

Pace Project No.: 35851645

Sample: HA00053-11		Lab ID: 35851645011	Collected: 12/22/23 18:40	Received: 01/04/24 10:25	Matrix: Drinking Water			
Parameters	Results	Units	Report Limit	DF	Prepared	Analyzed	CAS No.	Qual
200.8 MET ICPMS Drinking Water		Analytical Method: EPA 200.8 Pace Analytical Services - Ormond Beach						
Lead	3.2	ug/L	1.0	1		01/08/24 09:19	7439-92-1	

REPORT OF LABORATORY ANALYSIS

This report shall not be reproduced, except in full,
without the written consent of Pace Analytical Services, LLC.



ANALYTICAL RESULTS

Project: HA00053

Pace Project No.: 35851645

Sample: HA00053-12	Lab ID: 35851645012	Collected: 12/22/23 18:41	Received: 01/04/24 10:25	Matrix: Drinking Water				
Parameters	Results	Units	Report Limit	DF	Prepared	Analyzed	CAS No.	Qual
200.8 MET ICPMS Drinking Water	Analytical Method: EPA 200.8 Pace Analytical Services - Ormond Beach							
Lead	ND	ug/L	1.0	1		01/08/24 09:23	7439-92-1	

REPORT OF LABORATORY ANALYSIS

This report shall not be reproduced, except in full,
without the written consent of Pace Analytical Services, LLC.



ANALYTICAL RESULTS

Project: HA00053

Pace Project No.: 35851645

Sample: HA00053-13		Lab ID: 35851645013	Collected: 12/22/23 18:45	Received: 01/04/24 10:25	Matrix: Drinking Water			
Parameters	Results	Units	Report Limit	DF	Prepared	Analyzed	CAS No.	Qual
200.8 MET ICPMS Drinking Water		Analytical Method: EPA 200.8 Pace Analytical Services - Ormond Beach						
Lead	9.3	ug/L	1.0	1		01/08/24 09:24	7439-92-1	

REPORT OF LABORATORY ANALYSIS

This report shall not be reproduced, except in full,
without the written consent of Pace Analytical Services, LLC.



ANALYTICAL RESULTS

Project: HA00053

Pace Project No.: 35851645

Sample: HA00053-14		Lab ID: 35851645014	Collected: 12/22/23 18:47	Received: 01/04/24 10:25	Matrix: Drinking Water			
Parameters	Results	Units	Report Limit	DF	Prepared	Analyzed	CAS No.	Qual
200.8 MET ICPMS Drinking Water		Analytical Method: EPA 200.8 Pace Analytical Services - Ormond Beach						
Lead	ND	ug/L	1.0	1		01/08/24 09:26	7439-92-1	

REPORT OF LABORATORY ANALYSIS

This report shall not be reproduced, except in full,
without the written consent of Pace Analytical Services, LLC.



ANALYTICAL RESULTS

Project: HA00053
Pace Project No.: 35851645

Sample: HA00053-15		Lab ID: 35851645015	Collected: 12/22/23 18:48	Received: 01/04/24 10:25	Matrix: Drinking Water			
Parameters	Results	Units	Report Limit	DF	Prepared	Analyzed	CAS No.	Qual
200.8 MET ICPMS Drinking Water		Analytical Method: EPA 200.8 Pace Analytical Services - Ormond Beach						
Lead	ND	ug/L	1.0	1		01/08/24 09:27	7439-92-1	

REPORT OF LABORATORY ANALYSIS

This report shall not be reproduced, except in full,
without the written consent of Pace Analytical Services, LLC.



ANALYTICAL RESULTS

Project: HA00053

Pace Project No.: 35851645

Parameters	Results	Units	Report Limit	DF	Prepared	Analyzed	CAS No.	Qual
Sample: HA00053-16								
Lab ID: 35851645016								
Collected: 12/22/23 18:55 Received: 01/04/24 10:25 Matrix: Drinking Water								
200.8 MET ICPMS Drinking Water								
Analytical Method: EPA 200.8								
Pace Analytical Services - Ormond Beach								
Lead	23.7	ug/L	1.0	1		01/08/24 09:29	7439-92-1	

REPORT OF LABORATORY ANALYSIS

This report shall not be reproduced, except in full, without the written consent of Pace Analytical Services, LLC.



ANALYTICAL RESULTS

Project: HA00053

Pace Project No.: 35851645

Sample: HA00053-17		Lab ID: 35851645017	Collected: 12/22/23 18:58	Received: 01/04/24 10:25	Matrix: Drinking Water			
Parameters	Results	Units	Report Limit	DF	Prepared	Analyzed	CAS No.	Qual
200.8 MET ICPMS Drinking Water		Analytical Method: EPA 200.8 Pace Analytical Services - Ormond Beach						
Lead	ND	ug/L	1.0	1		01/08/24 09:30	7439-92-1	

REPORT OF LABORATORY ANALYSIS

This report shall not be reproduced, except in full,
without the written consent of Pace Analytical Services, LLC.



ANALYTICAL RESULTS

Project: HA00053

Pace Project No.: 35851645

Parameters	Results	Units	Report Limit	DF	Prepared	Analyzed	CAS No.	Qual
Sample: HA00053-18								
Lab ID: 35851645018								
Collected: 12/22/23 18:58								
Received: 01/04/24 10:25								
Matrix: Drinking Water								
200.8 MET ICPMS Drinking Water								
Analytical Method: EPA 200.8								
Pace Analytical Services - Ormond Beach								
Lead	ND	ug/L	1.0	1		01/08/24 09:31	7439-92-1	

REPORT OF LABORATORY ANALYSIS

This report shall not be reproduced, except in full, without the written consent of Pace Analytical Services, LLC.



ANALYTICAL RESULTS

Project: HA00053

Pace Project No.: 35851645

Sample: HA00053-19	Lab ID: 35851645019	Collected: 12/22/23 19:00	Received: 01/04/24 10:25	Matrix: Drinking Water					
Parameters	Results	Units	Report Limit	DF	Prepared	Analyzed	CAS No.	Qual	
200.8 MET ICPMS Drinking Water	Analytical Method: EPA 200.8 Pace Analytical Services - Ormond Beach								
Lead	6.7	ug/L	1.0	1		01/08/24 09:33	7439-92-1		

REPORT OF LABORATORY ANALYSIS

This report shall not be reproduced, except in full,
without the written consent of Pace Analytical Services, LLC.



ANALYTICAL RESULTS

Project: HA00053

Pace Project No.: 35851645

Sample: HA00053-20	Lab ID: 35851645020	Collected: 12/22/23 19:01	Received: 01/04/24 10:25	Matrix: Drinking Water					
Parameters	Results	Units	Report Limit	DF	Prepared	Analyzed	CAS No.	Qual	
200.8 MET ICPMS Drinking Water	Analytical Method: EPA 200.8 Pace Analytical Services - Ormond Beach								
Lead	3.9	ug/L	1.0	1		01/08/24 09:34	7439-92-1		

REPORT OF LABORATORY ANALYSIS

This report shall not be reproduced, except in full,
without the written consent of Pace Analytical Services, LLC.



ANALYTICAL RESULTS

Project: HA00053

Pace Project No.: 35851645

Sample: HA00053-21		Lab ID: 35851645021	Collected: 12/22/23 19:04	Received: 01/04/24 10:25	Matrix: Drinking Water			
Parameters	Results	Units	Report Limit	DF	Prepared	Analyzed	CAS No.	Qual
200.8 MET ICPMS Drinking Water		Analytical Method: EPA 200.8 Pace Analytical Services - Ormond Beach						
Lead	ND	ug/L	1.0	1		01/08/24 09:36	7439-92-1	

REPORT OF LABORATORY ANALYSIS

This report shall not be reproduced, except in full,
without the written consent of Pace Analytical Services, LLC.



ANALYTICAL RESULTS

Project: HA00053

Pace Project No.: 35851645

Sample: HA00053-22		Lab ID: 35851645022	Collected: 12/22/23 19:06	Received: 01/04/24 10:25	Matrix: Drinking Water			
Parameters	Results	Units	Report Limit	DF	Prepared	Analyzed	CAS No.	Qual
200.8 MET ICPMS Drinking Water		Analytical Method: EPA 200.8 Pace Analytical Services - Ormond Beach						
Lead	1.1	ug/L	1.0	1		01/08/24 09:40	7439-92-1	

REPORT OF LABORATORY ANALYSIS

This report shall not be reproduced, except in full,
without the written consent of Pace Analytical Services, LLC.



ANALYTICAL RESULTS

Project: HA00053

Pace Project No.: 35851645

Sample: HA00053-23		Lab ID: 35851645023	Collected: 12/22/23 19:08	Received: 01/04/24 10:25	Matrix: Drinking Water			
Parameters	Results	Units	Report Limit	DF	Prepared	Analyzed	CAS No.	Qual
200.8 MET ICPMS Drinking Water		Analytical Method: EPA 200.8 Pace Analytical Services - Ormond Beach						
Lead	11.0	ug/L	1.0	1		01/08/24 09:41	7439-92-1	

REPORT OF LABORATORY ANALYSIS

This report shall not be reproduced, except in full,
without the written consent of Pace Analytical Services, LLC.



ANALYTICAL RESULTS

Project: HA00053

Pace Project No.: 35851645

Sample: HA00053-24	Lab ID: 35851645024	Collected: 12/22/23 19:10	Received: 01/04/24 10:25	Matrix: Drinking Water				
Parameters	Results	Units	Report Limit	DF	Prepared	Analyzed	CAS No.	Qual
200.8 MET ICPMS Drinking Water	Analytical Method: EPA 200.8 Pace Analytical Services - Ormond Beach							
Lead	1.1	ug/L	1.0	1		01/08/24 09:48	7439-92-1	

REPORT OF LABORATORY ANALYSIS

This report shall not be reproduced, except in full,
without the written consent of Pace Analytical Services, LLC.



ANALYTICAL RESULTS

Project: HA00053

Pace Project No.: 35851645

Parameters	Results	Units	Report Limit	DF	Prepared	Analyzed	CAS No.	Qual
Sample: HA00053-25								
Lab ID: 35851645025								
Collected: 12/22/23 19:12 Received: 01/04/24 10:25 Matrix: Drinking Water								
200.8 MET ICPMS Drinking Water	Analytical Method: EPA 200.8 Pace Analytical Services - Ormond Beach							
Lead	2.3	ug/L	1.0	1		01/08/24 09:53	7439-92-1	

REPORT OF LABORATORY ANALYSIS

This report shall not be reproduced, except in full,
without the written consent of Pace Analytical Services, LLC.



ANALYTICAL RESULTS

Project: HA00053

Pace Project No.: 35851645

Sample: HA00053-26		Lab ID: 35851645026	Collected: 12/22/23 19:13	Received: 01/04/24 10:25	Matrix: Drinking Water			
Parameters	Results	Units	Report Limit	DF	Prepared	Analyzed	CAS No.	Qual
200.8 MET ICPMS Drinking Water		Analytical Method: EPA 200.8 Pace Analytical Services - Ormond Beach						
Lead	ND	ug/L	1.0	1		01/08/24 09:57	7439-92-1	

REPORT OF LABORATORY ANALYSIS

This report shall not be reproduced, except in full,
without the written consent of Pace Analytical Services, LLC.



ANALYTICAL RESULTS

Project: HA00053

Pace Project No.: 35851645

Sample: HA00053-27		Lab ID: 35851645027	Collected: 12/22/23 19:14	Received: 01/04/24 10:25	Matrix: Drinking Water			
Parameters	Results	Units	Report Limit	DF	Prepared	Analyzed	CAS No.	Qual
200.8 MET ICPMS Drinking Water		Analytical Method: EPA 200.8 Pace Analytical Services - Ormond Beach						
Lead	ND	ug/L	1.0	1		01/08/24 09:58	7439-92-1	

REPORT OF LABORATORY ANALYSIS

This report shall not be reproduced, except in full,
without the written consent of Pace Analytical Services, LLC.



ANALYTICAL RESULTS

Project: HA00053

Pace Project No.: 35851645

Sample: HA00053-28	Lab ID: 35851645028	Collected: 12/22/23 19:15	Received: 01/04/24 10:25	Matrix: Drinking Water				
Parameters	Results	Units	Report Limit	DF	Prepared	Analyzed	CAS No.	Qual
200.8 MET ICPMS Drinking Water	Analytical Method: EPA 200.8 Pace Analytical Services - Ormond Beach							
Lead	ND	ug/L	1.0	1		01/08/24 10:00	7439-92-1	

REPORT OF LABORATORY ANALYSIS

This report shall not be reproduced, except in full,
without the written consent of Pace Analytical Services, LLC.



ANALYTICAL RESULTS

Project: HA00053

Pace Project No.: 35851645

Sample: HA00053-29	Lab ID: 35851645029	Collected: 12/22/23 19:16	Received: 01/04/24 10:25	Matrix: Drinking Water				
Parameters	Results	Units	Report Limit	DF	Prepared	Analyzed	CAS No.	Qual
200.8 MET ICPMS Drinking Water	Analytical Method: EPA 200.8 Pace Analytical Services - Ormond Beach							
Lead	ND	ug/L	1.0	1		01/08/24 11:16	7439-92-1	

REPORT OF LABORATORY ANALYSIS

This report shall not be reproduced, except in full,
without the written consent of Pace Analytical Services, LLC.



ANALYTICAL RESULTS

Project: HA00053

Pace Project No.: 35851645

Sample: HA00053-30		Lab ID: 35851645030	Collected: 12/22/23 19:17	Received: 01/04/24 10:25	Matrix: Drinking Water			
Parameters	Results	Units	Report Limit	DF	Prepared	Analyzed	CAS No.	Qual
200.8 MET ICPMS Drinking Water		Analytical Method: EPA 200.8 Pace Analytical Services - Ormond Beach						
Lead	ND	ug/L	1.0	1		01/08/24 10:03	7439-92-1	

REPORT OF LABORATORY ANALYSIS

This report shall not be reproduced, except in full,
without the written consent of Pace Analytical Services, LLC.



ANALYTICAL RESULTS

Project: HA00053

Pace Project No.: 35851645

Sample: HA00053-31	Lab ID: 35851645031	Collected: 12/22/23 19:20	Received: 01/04/24 10:25	Matrix: Drinking Water				
Parameters	Results	Units	Report Limit	DF	Prepared	Analyzed	CAS No.	Qual
200.8 MET ICPMS Drinking Water	Analytical Method: EPA 200.8 Pace Analytical Services - Ormond Beach							
Lead	ND	ug/L	1.0	1		01/08/24 10:04	7439-92-1	

REPORT OF LABORATORY ANALYSIS

This report shall not be reproduced, except in full,
without the written consent of Pace Analytical Services, LLC.



ANALYTICAL RESULTS

Project: HA00053

Pace Project No.: 35851645

Parameters	Results	Units	Report Limit	DF	Prepared	Analyzed	CAS No.	Qual
Sample: HA00053-32								
Lab ID: 35851645032								
Collected: 12/22/23 19:21 Received: 01/04/24 10:25 Matrix: Drinking Water								
200.8 MET ICPMS Drinking Water								
Analytical Method: EPA 200.8								
Pace Analytical Services - Ormond Beach								
Lead	ND	ug/L	1.0	1		01/08/24 10:05	7439-92-1	

REPORT OF LABORATORY ANALYSIS

This report shall not be reproduced, except in full, without the written consent of Pace Analytical Services, LLC.



ANALYTICAL RESULTS

Project: HA00053

Pace Project No.: 35851645

Sample: HA00053-33		Lab ID: 35851645033	Collected: 12/22/23 19:21	Received: 01/04/24 10:25	Matrix: Drinking Water			
Parameters	Results	Units	Report Limit	DF	Prepared	Analyzed	CAS No.	Qual
200.8 MET ICPMS Drinking Water		Analytical Method: EPA 200.8 Pace Analytical Services - Ormond Beach						
Lead	ND	ug/L	1.0	1		01/08/24 10:07	7439-92-1	

REPORT OF LABORATORY ANALYSIS

This report shall not be reproduced, except in full,
without the written consent of Pace Analytical Services, LLC.



ANALYTICAL RESULTS

Project: HA00053

Pace Project No.: 35851645

Parameters	Results	Units	Report Limit	DF	Prepared	Analyzed	CAS No.	Qual
Sample: HA00053-34								
Lab ID: 35851645034								
Collected: 12/22/23 19:22								
Received: 01/04/24 10:25								
Matrix: Drinking Water								
200.8 MET ICPMS Drinking Water								
Analytical Method: EPA 200.8								
Pace Analytical Services - Ormond Beach								
Lead	ND	ug/L	1.0	1		01/08/24 10:08	7439-92-1	

REPORT OF LABORATORY ANALYSIS

This report shall not be reproduced, except in full, without the written consent of Pace Analytical Services, LLC.



ANALYTICAL RESULTS

Project: HA00053

Pace Project No.: 35851645

Sample: HA00053-35		Lab ID: 35851645035	Collected: 12/22/23 19:23	Received: 01/04/24 10:25	Matrix: Drinking Water			
Parameters	Results	Units	Report Limit	DF	Prepared	Analyzed	CAS No.	Qual
200.8 MET ICPMS Drinking Water		Analytical Method: EPA 200.8 Pace Analytical Services - Ormond Beach						
Lead	1.2	ug/L	1.0	1		01/08/24 10:10	7439-92-1	

REPORT OF LABORATORY ANALYSIS

This report shall not be reproduced, except in full,
without the written consent of Pace Analytical Services, LLC.



ANALYTICAL RESULTS

Project: HA00053

Pace Project No.: 35851645

Parameters	Results	Units	Report Limit	DF	Prepared	Analyzed	CAS No.	Qual
Sample: HA00053-36								
Lab ID: 35851645036								
Collected: 12/22/23 19:25								
Received: 01/04/24 10:25								
Matrix: Drinking Water								
200.8 MET ICPMS Drinking Water								
Analytical Method: EPA 200.8								
Pace Analytical Services - Ormond Beach								
Lead	ND	ug/L	1.0	1		01/08/24 10:14	7439-92-1	

REPORT OF LABORATORY ANALYSIS

This report shall not be reproduced, except in full,
without the written consent of Pace Analytical Services, LLC.



ANALYTICAL RESULTS

Project: HA00053

Pace Project No.: 35851645

Parameters	Results	Units	Report Limit	DF	Prepared	Analyzed	CAS No.	Qual
Sample: HA00053-37								
Lab ID: 35851645037								
Collected: 12/22/23 19:27								
Received: 01/04/24 10:25								
Matrix: Drinking Water								
200.8 MET ICPMS Drinking Water								
Analytical Method: EPA 200.8								
Pace Analytical Services - Ormond Beach								
Lead	ND	ug/L	1.0	1		01/08/24 10:15	7439-92-1	

REPORT OF LABORATORY ANALYSIS

This report shall not be reproduced, except in full, without the written consent of Pace Analytical Services, LLC.



ANALYTICAL RESULTS

Project: HA00053

Pace Project No.: 35851645

Sample: HA00053-38		Lab ID: 35851645038	Collected: 12/22/23 19:32	Received: 01/04/24 10:25	Matrix: Drinking Water			
Parameters	Results	Units	Report Limit	DF	Prepared	Analyzed	CAS No.	Qual
200.8 MET ICPMS Drinking Water		Analytical Method: EPA 200.8 Pace Analytical Services - Ormond Beach						
Lead	ND	ug/L	1.0	1		01/08/24 10:17	7439-92-1	

REPORT OF LABORATORY ANALYSIS

This report shall not be reproduced, except in full,
without the written consent of Pace Analytical Services, LLC.



ANALYTICAL RESULTS

Project: HA00053

Pace Project No.: 35851645

Parameters	Results	Units	Report Limit	DF	Prepared	Analyzed	CAS No.	Qual
Sample: HA00053-39								
Lab ID: 35851645039								
Collected: 12/22/23 19:34 Received: 01/04/24 10:25 Matrix: Drinking Water								
200.8 MET ICPMS Drinking Water								
Analytical Method: EPA 200.8								
Pace Analytical Services - Ormond Beach								
Lead	ND	ug/L	1.0	1		01/08/24 10:18	7439-92-1	

REPORT OF LABORATORY ANALYSIS

This report shall not be reproduced, except in full, without the written consent of Pace Analytical Services, LLC.



ANALYTICAL RESULTS

Project: HA00053

Pace Project No.: 35851645

Sample: HA00053-40		Lab ID: 35851645040	Collected: 12/22/23 19:35	Received: 01/04/24 10:25	Matrix: Drinking Water			
Parameters	Results	Units	Report Limit	DF	Prepared	Analyzed	CAS No.	Qual
200.8 MET ICPMS Drinking Water		Analytical Method: EPA 200.8 Pace Analytical Services - Ormond Beach						
Lead	ND	ug/L	1.0	1		01/08/24 10:20	7439-92-1	

REPORT OF LABORATORY ANALYSIS

This report shall not be reproduced, except in full,
without the written consent of Pace Analytical Services, LLC.



ANALYTICAL RESULTS

Project: HA00053

Pace Project No.: 35851645

Sample: HA00053-41		Lab ID: 35851645041	Collected: 12/22/23 19:37	Received: 01/04/24 10:25	Matrix: Drinking Water			
Parameters	Results	Units	Report Limit	DF	Prepared	Analyzed	CAS No.	Qual
200.8 MET ICPMS Drinking Water		Analytical Method: EPA 200.8 Pace Analytical Services - Ormond Beach						
Lead	ND	ug/L	1.0	1		01/08/24 10:21	7439-92-1	

REPORT OF LABORATORY ANALYSIS

This report shall not be reproduced, except in full,
without the written consent of Pace Analytical Services, LLC.



ANALYTICAL RESULTS

Project: HA00053

Pace Project No.: 35851645

Sample: HA00053-42		Lab ID: 35851645042	Collected: 12/22/23 19:38	Received: 01/04/24 10:25	Matrix: Drinking Water			
Parameters	Results	Units	Report Limit	DF	Prepared	Analyzed	CAS No.	Qual
200.8 MET ICPMS Drinking Water		Analytical Method: EPA 200.8 Pace Analytical Services - Ormond Beach						
Lead	ND	ug/L	1.0	1		01/08/24 10:22	7439-92-1	

REPORT OF LABORATORY ANALYSIS

This report shall not be reproduced, except in full,
without the written consent of Pace Analytical Services, LLC.



ANALYTICAL RESULTS

Project: HA00053

Pace Project No.: 35851645

Sample: HA00053-43		Lab ID: 35851645043	Collected: 12/22/23 19:40	Received: 01/04/24 10:25	Matrix: Drinking Water			
Parameters	Results	Units	Report Limit	DF	Prepared	Analyzed	CAS No.	Qual
200.8 MET ICPMS Drinking Water		Analytical Method: EPA 200.8 Pace Analytical Services - Ormond Beach						
Lead	ND	ug/L	1.0	1		01/08/24 10:24	7439-92-1	

REPORT OF LABORATORY ANALYSIS

This report shall not be reproduced, except in full,
without the written consent of Pace Analytical Services, LLC.



ANALYTICAL RESULTS

Project: HA00053

Pace Project No.: 35851645

Parameters	Results	Units	Report Limit	DF	Prepared	Analyzed	CAS No.	Qual
Sample: HA00053-44								
Lab ID: 35851645044								
Collected: 12/22/23 19:46 Received: 01/04/24 10:25 Matrix: Drinking Water								
200.8 MET ICPMS Drinking Water	Analytical Method: EPA 200.8 Pace Analytical Services - Ormond Beach							
Lead	ND	ug/L	1.0	1		01/08/24 10:34	7439-92-1	

REPORT OF LABORATORY ANALYSIS

This report shall not be reproduced, except in full,
without the written consent of Pace Analytical Services, LLC.



ANALYTICAL RESULTS

Project: HA00053

Pace Project No.: 35851645

Sample: HA00053-45		Lab ID: 35851645045	Collected: 12/22/23 19:48	Received: 01/04/24 10:25	Matrix: Drinking Water			
Parameters	Results	Units	Report Limit	DF	Prepared	Analyzed	CAS No.	Qual
200.8 MET ICPMS Drinking Water		Analytical Method: EPA 200.8 Pace Analytical Services - Ormond Beach						
Lead	ND	ug/L	1.0	1		01/08/24 10:38	7439-92-1	

REPORT OF LABORATORY ANALYSIS

This report shall not be reproduced, except in full,
without the written consent of Pace Analytical Services, LLC.



ANALYTICAL RESULTS

Project: HA00053

Pace Project No.: 35851645

Sample: HA00053-46	Lab ID: 35851645046	Collected: 12/22/23 19:51	Received: 01/04/24 10:25	Matrix: Drinking Water					
Parameters	Results	Units	Report Limit	DF	Prepared	Analyzed	CAS No.	Qual	
200.8 MET ICPMS Drinking Water	Analytical Method: EPA 200.8 Pace Analytical Services - Ormond Beach								
Lead	ND	ug/L	1.0	1		01/08/24 10:39	7439-92-1		

REPORT OF LABORATORY ANALYSIS

This report shall not be reproduced, except in full,
without the written consent of Pace Analytical Services, LLC.



ANALYTICAL RESULTS

Project: HA00053

Pace Project No.: 35851645

Parameters	Results	Units	Report Limit	DF	Prepared	Analyzed	CAS No.	Qual
Sample: HA00053-47								
Lab ID: 35851645047								
Collected: 12/22/23 19:52 Received: 01/04/24 10:25 Matrix: Drinking Water								
200.8 MET ICPMS Drinking Water	Analytical Method: EPA 200.8 Pace Analytical Services - Ormond Beach							
Lead	ND	ug/L	1.0	1		01/08/24 10:41	7439-92-1	

REPORT OF LABORATORY ANALYSIS

This report shall not be reproduced, except in full,
without the written consent of Pace Analytical Services, LLC.



ANALYTICAL RESULTS

Project: HA00053

Pace Project No.: 35851645

Sample: HA00053-48		Lab ID: 35851645048	Collected: 12/22/23 19:53	Received: 01/04/24 10:25	Matrix: Drinking Water			
Parameters	Results	Units	Report Limit	DF	Prepared	Analyzed	CAS No.	Qual
200.8 MET ICPMS Drinking Water		Analytical Method: EPA 200.8 Pace Analytical Services - Ormond Beach						
Lead	ND	ug/L	1.0	1		01/08/24 10:42	7439-92-1	

REPORT OF LABORATORY ANALYSIS

This report shall not be reproduced, except in full,
without the written consent of Pace Analytical Services, LLC.



ANALYTICAL RESULTS

Project: HA00053

Pace Project No.: 35851645

Sample: HA00053-49		Lab ID: 35851645049	Collected: 12/22/23 19:54	Received: 01/04/24 10:25	Matrix: Drinking Water			
Parameters	Results	Units	Report Limit	DF	Prepared	Analyzed	CAS No.	Qual
200.8 MET ICPMS Drinking Water		Analytical Method: EPA 200.8 Pace Analytical Services - Ormond Beach						
Lead	ND	ug/L	1.0	1		01/08/24 10:44	7439-92-1	

REPORT OF LABORATORY ANALYSIS

This report shall not be reproduced, except in full,
without the written consent of Pace Analytical Services, LLC.



ANALYTICAL RESULTS

Project: HA00053

Pace Project No.: 35851645

Sample: HA00053-50	Lab ID: 35851645050	Collected: 12/22/23 19:57	Received: 01/04/24 10:25	Matrix: Drinking Water				
Parameters	Results	Units	Report Limit	DF	Prepared	Analyzed	CAS No.	Qual
200.8 MET ICPMS Drinking Water	Analytical Method: EPA 200.8 Pace Analytical Services - Ormond Beach							
Lead	1.4	ug/L	1.0	1		01/08/24 10:48	7439-92-1	

REPORT OF LABORATORY ANALYSIS

This report shall not be reproduced, except in full,
without the written consent of Pace Analytical Services, LLC.



ANALYTICAL RESULTS

Project: HA00053

Pace Project No.: 35851645

Sample: HA00053-51	Lab ID: 35851645051	Collected: 12/22/23 19:59	Received: 01/04/24 10:25	Matrix: Drinking Water				
Parameters	Results	Units	Report Limit	DF	Prepared	Analyzed	CAS No.	Qual
200.8 MET ICPMS Drinking Water	Analytical Method: EPA 200.8 Pace Analytical Services - Ormond Beach							
Lead	3.2	ug/L	1.0	1		01/08/24 10:49	7439-92-1	

REPORT OF LABORATORY ANALYSIS

This report shall not be reproduced, except in full,
without the written consent of Pace Analytical Services, LLC.



ANALYTICAL RESULTS

Project: HA00053

Pace Project No.: 35851645

Sample: HA00053-52	Lab ID: 35851645052	Collected: 12/22/23 20:01	Received: 01/04/24 10:25	Matrix: Drinking Water					
Parameters	Results	Units	Report Limit	DF	Prepared	Analyzed	CAS No.	Qual	
200.8 MET ICPMS Drinking Water	Analytical Method: EPA 200.8 Pace Analytical Services - Ormond Beach								
Lead	ND	ug/L	1.0	1		01/08/24 10:51	7439-92-1		

REPORT OF LABORATORY ANALYSIS

This report shall not be reproduced, except in full,
without the written consent of Pace Analytical Services, LLC.



ANALYTICAL RESULTS

Project: HA00053

Pace Project No.: 35851645

Sample: HA00053-53		Lab ID: 35851645053	Collected: 12/22/23 20:02	Received: 01/04/24 10:25	Matrix: Drinking Water			
Parameters	Results	Units	Report Limit	DF	Prepared	Analyzed	CAS No.	Qual
200.8 MET ICPMS Drinking Water		Analytical Method: EPA 200.8 Pace Analytical Services - Ormond Beach						
Lead	ND	ug/L	1.0	1		01/08/24 10:52	7439-92-1	

REPORT OF LABORATORY ANALYSIS

This report shall not be reproduced, except in full,
without the written consent of Pace Analytical Services, LLC.



ANALYTICAL RESULTS

Project: HA00053

Pace Project No.: 35851645

Sample: HA00053-54		Lab ID: 35851645054	Collected: 12/22/23 20:03	Received: 01/04/24 10:25	Matrix: Drinking Water			
Parameters	Results	Units	Report Limit	DF	Prepared	Analyzed	CAS No.	Qual
200.8 MET ICPMS Drinking Water		Analytical Method: EPA 200.8 Pace Analytical Services - Ormond Beach						
Lead	ND	ug/L	1.0	1		01/08/24 10:54	7439-92-1	

REPORT OF LABORATORY ANALYSIS

This report shall not be reproduced, except in full,
without the written consent of Pace Analytical Services, LLC.



ANALYTICAL RESULTS

Project: HA00053

Pace Project No.: 35851645

Parameters	Results	Units	Report Limit	DF	Prepared	Analyzed	CAS No.	Qual
Sample: HA00053-55								
Lab ID: 35851645055								
Collected: 12/22/23 20:05 Received: 01/04/24 10:25 Matrix: Drinking Water								
200.8 MET ICPMS Drinking Water								
Analytical Method: EPA 200.8								
Pace Analytical Services - Ormond Beach								
Lead	ND	ug/L	1.0	1		01/08/24 10:55	7439-92-1	

REPORT OF LABORATORY ANALYSIS

This report shall not be reproduced, except in full, without the written consent of Pace Analytical Services, LLC.



ANALYTICAL RESULTS

Project: HA00053

Pace Project No.: 35851645

Sample: HA00053-56		Lab ID: 35851645056	Collected: 12/22/23 20:06	Received: 01/04/24 10:25	Matrix: Drinking Water			
Parameters	Results	Units	Report Limit	DF	Prepared	Analyzed	CAS No.	Qual
200.8 MET ICPMS Drinking Water		Analytical Method: EPA 200.8 Pace Analytical Services - Ormond Beach						
Lead	138	ug/L	1.0	1		01/08/24 10:56	7439-92-1	

REPORT OF LABORATORY ANALYSIS

This report shall not be reproduced, except in full,
without the written consent of Pace Analytical Services, LLC.



ANALYTICAL RESULTS

Project: HA00053

Pace Project No.: 35851645

Sample: HA00053-57		Lab ID: 35851645057	Collected: 12/22/23 20:08	Received: 01/04/24 10:25	Matrix: Drinking Water			
Parameters	Results	Units	Report Limit	DF	Prepared	Analyzed	CAS No.	Qual
200.8 MET ICPMS Drinking Water		Analytical Method: EPA 200.8 Pace Analytical Services - Ormond Beach						
Lead	ND	ug/L	1.0	1		01/08/24 10:58	7439-92-1	

REPORT OF LABORATORY ANALYSIS

This report shall not be reproduced, except in full,
without the written consent of Pace Analytical Services, LLC.



ANALYTICAL RESULTS

Project: HA00053

Pace Project No.: 35851645

Sample: HA00053-58		Lab ID: 35851645058	Collected: 12/22/23 20:19	Received: 01/04/24 10:25	Matrix: Drinking Water			
Parameters	Results	Units	Report Limit	DF	Prepared	Analyzed	CAS No.	Qual
200.8 MET ICPMS Drinking Water		Analytical Method: EPA 200.8 Pace Analytical Services - Ormond Beach						
Lead	ND	ug/L	1.0	1		01/08/24 10:59	7439-92-1	

REPORT OF LABORATORY ANALYSIS

This report shall not be reproduced, except in full,
without the written consent of Pace Analytical Services, LLC.



ANALYTICAL RESULTS

Project: HA00053

Pace Project No.: 35851645

Sample: HA00053-59		Lab ID: 35851645059	Collected: 12/22/23 20:20	Received: 01/04/24 10:25	Matrix: Drinking Water			
Parameters	Results	Units	Report Limit	DF	Prepared	Analyzed	CAS No.	Qual
200.8 MET ICPMS Drinking Water		Analytical Method: EPA 200.8 Pace Analytical Services - Ormond Beach						
Lead	ND	ug/L	1.0	1		01/08/24 11:01	7439-92-1	

REPORT OF LABORATORY ANALYSIS

This report shall not be reproduced, except in full,
without the written consent of Pace Analytical Services, LLC.



ANALYTICAL RESULTS

Project: HA00053

Pace Project No.: 35851645

Sample: HA00053-60	Lab ID: 35851645060	Collected: 12/22/23 20:21	Received: 01/04/24 10:25	Matrix: Drinking Water				
Parameters	Results	Units	Report Limit	DF	Prepared	Analyzed	CAS No.	Qual
200.8 MET ICPMS Drinking Water	Analytical Method: EPA 200.8 Pace Analytical Services - Ormond Beach							
Lead	ND	ug/L	1.0	1		01/08/24 11:05	7439-92-1	

REPORT OF LABORATORY ANALYSIS

This report shall not be reproduced, except in full,
without the written consent of Pace Analytical Services, LLC.



ANALYTICAL RESULTS

Project: HA00053

Pace Project No.: 35851645

Sample: HA00053-61		Lab ID: 35851645061	Collected: 12/22/23 20:23	Received: 01/04/24 10:25	Matrix: Drinking Water			
Parameters	Results	Units	Report Limit	DF	Prepared	Analyzed	CAS No.	Qual
200.8 MET ICPMS Drinking Water		Analytical Method: EPA 200.8 Pace Analytical Services - Ormond Beach						
Lead	ND	ug/L	1.0	1		01/05/24 10:07	7439-92-1	

REPORT OF LABORATORY ANALYSIS

This report shall not be reproduced, except in full,
without the written consent of Pace Analytical Services, LLC.



ANALYTICAL RESULTS

Project: HA00053

Pace Project No.: 35851645

Parameters	Results	Units	Report Limit	DF	Prepared	Analyzed	CAS No.	Qual
Sample: HA00053-62								
Lab ID: 35851645062								
Collected: 12/22/23 20:24 Received: 01/04/24 10:25 Matrix: Drinking Water								
200.8 MET ICPMS Drinking Water								
Analytical Method: EPA 200.8								
Pace Analytical Services - Ormond Beach								
Lead	ND	ug/L	1.0	1		01/05/24 10:09	7439-92-1	

REPORT OF LABORATORY ANALYSIS

This report shall not be reproduced, except in full, without the written consent of Pace Analytical Services, LLC.



ANALYTICAL RESULTS

Project: HA00053

Pace Project No.: 35851645

Sample: HA00053-63		Lab ID: 35851645063	Collected: 12/22/23 20:26	Received: 01/04/24 10:25	Matrix: Drinking Water			
Parameters	Results	Units	Report Limit	DF	Prepared	Analyzed	CAS No.	Qual
200.8 MET ICPMS Drinking Water		Analytical Method: EPA 200.8 Pace Analytical Services - Ormond Beach						
Lead	ND	ug/L	1.0	1		01/05/24 10:10	7439-92-1	

REPORT OF LABORATORY ANALYSIS

This report shall not be reproduced, except in full,
without the written consent of Pace Analytical Services, LLC.



ANALYTICAL RESULTS

Project: HA00053

Pace Project No.: 35851645

Sample: HA00053-64		Lab ID: 35851645064	Collected: 12/22/23 20:28	Received: 01/04/24 10:25	Matrix: Drinking Water			
Parameters	Results	Units	Report Limit	DF	Prepared	Analyzed	CAS No.	Qual
200.8 MET ICPMS Drinking Water		Analytical Method: EPA 200.8 Pace Analytical Services - Ormond Beach						
Lead	ND	ug/L	1.0	1		01/05/24 10:11	7439-92-1	

REPORT OF LABORATORY ANALYSIS

This report shall not be reproduced, except in full,
without the written consent of Pace Analytical Services, LLC.



ANALYTICAL RESULTS

Project: HA00053

Pace Project No.: 35851645

Sample: HA00053-65		Lab ID: 35851645065	Collected: 12/22/23 20:28	Received: 01/04/24 10:25	Matrix: Drinking Water			
Parameters	Results	Units	Report Limit	DF	Prepared	Analyzed	CAS No.	Qual
200.8 MET ICPMS Drinking Water		Analytical Method: EPA 200.8 Pace Analytical Services - Ormond Beach						
Lead	ND	ug/L	1.0	1		01/05/24 10:13	7439-92-1	

REPORT OF LABORATORY ANALYSIS

This report shall not be reproduced, except in full,
without the written consent of Pace Analytical Services, LLC.



ANALYTICAL RESULTS

Project: HA00053

Pace Project No.: 35851645

Parameters	Results	Units	Report Limit	DF	Prepared	Analyzed	CAS No.	Qual
Sample: HA00053-66								
Lab ID: 35851645066								
Collected: 12/22/23 20:31								
Received: 01/04/24 10:25								
Matrix: Drinking Water								
200.8 MET ICPMS Drinking Water								
Analytical Method: EPA 200.8								
Pace Analytical Services - Ormond Beach								
Lead	ND	ug/L	1.0	1		01/05/24 10:17	7439-92-1	

REPORT OF LABORATORY ANALYSIS

This report shall not be reproduced, except in full, without the written consent of Pace Analytical Services, LLC.



ANALYTICAL RESULTS

Project: HA00053

Pace Project No.: 35851645

Sample: HA00053-67		Lab ID: 35851645067	Collected: 12/22/23 20:32	Received: 01/04/24 10:25	Matrix: Drinking Water			
Parameters	Results	Units	Report Limit	DF	Prepared	Analyzed	CAS No.	Qual
200.8 MET ICPMS Drinking Water		Analytical Method: EPA 200.8 Pace Analytical Services - Ormond Beach						
Lead	ND	ug/L	1.0	1		01/05/24 10:18	7439-92-1	

REPORT OF LABORATORY ANALYSIS

This report shall not be reproduced, except in full,
without the written consent of Pace Analytical Services, LLC.



ANALYTICAL RESULTS

Project: HA00053

Pace Project No.: 35851645

Sample: HA00053-68		Lab ID: 35851645068	Collected: 12/22/23 20:35	Received: 01/04/24 10:25	Matrix: Drinking Water			
Parameters	Results	Units	Report Limit	DF	Prepared	Analyzed	CAS No.	Qual
200.8 MET ICPMS Drinking Water		Analytical Method: EPA 200.8 Pace Analytical Services - Ormond Beach						
Lead	1.2	ug/L	1.0	1		01/05/24 10:20	7439-92-1	

REPORT OF LABORATORY ANALYSIS

This report shall not be reproduced, except in full,
without the written consent of Pace Analytical Services, LLC.



ANALYTICAL RESULTS

Project: HA00053

Pace Project No.: 35851645

Parameters	Results	Units	Report Limit	DF	Prepared	Analyzed	CAS No.	Qual
Sample: HA00053-69								
Lab ID: 35851645069								
Collected: 12/22/23 20:36 Received: 01/04/24 10:25 Matrix: Drinking Water								
200.8 MET ICPMS Drinking Water								
Analytical Method: EPA 200.8								
Pace Analytical Services - Ormond Beach								
Lead	1.8	ug/L	1.0	1		01/05/24 10:21	7439-92-1	

REPORT OF LABORATORY ANALYSIS

This report shall not be reproduced, except in full, without the written consent of Pace Analytical Services, LLC.



QUALITY CONTROL DATA

Project: HA00053
 Pace Project No.: 35851645

QC Batch: 978320 Analysis Method: EPA 200.8
 QC Batch Method: EPA 200.8 Analysis Description: 200.8 MET No Prep Drinking Water
 Laboratory: Pace Analytical Services - Ormond Beach
 Associated Lab Samples: 35851645061, 35851645062, 35851645063, 35851645064, 35851645065, 35851645066, 35851645067, 35851645068, 35851645069

METHOD BLANK: 5382171 Matrix: Water
 Associated Lab Samples: 35851645061, 35851645062, 35851645063, 35851645064, 35851645065, 35851645066, 35851645067, 35851645068, 35851645069

Parameter	Units	Blank Result	Reporting Limit	Analyzed	Qualifiers
Lead	ug/L	ND	1.0	01/05/24 10:23	

LABORATORY CONTROL SAMPLE: 5382172

Parameter	Units	Spike Conc.	LCS Result	LCS % Rec	% Rec Limits	Qualifiers
Lead	ug/L	50	43.1	86	85-115	

MATRIX SPIKE & MATRIX SPIKE DUPLICATE: 5382167 5382168

Parameter	35851448006 Units	35851448006 Result	MS Spike Conc.	MSD Spike Conc.	MS Result	MSD Result	MS % Rec	MSD % Rec	% Rec Limits	RPD	Qual
Lead	ug/L	<0.0002 2 mg/L	50	50	42.6	41.8	85	83	70-130	2	

MATRIX SPIKE & MATRIX SPIKE DUPLICATE: 5382169 5382170

Parameter	35851448016 Units	35851448016 Result	MS Spike Conc.	MSD Spike Conc.	MS Result	MSD Result	MS % Rec	MSD % Rec	% Rec Limits	RPD	Qual
Lead	ug/L	0.00024 1 mg/L	50	50	40.6	42.6	81	85	70-130	5	

Results presented on this page are in the units indicated by the "Units" column except where an alternate unit is presented to the right of the result.

REPORT OF LABORATORY ANALYSIS

This report shall not be reproduced, except in full,
 without the written consent of Pace Analytical Services, LLC.



QUALITY CONTROL DATA

Project: HA00053

Pace Project No.: 35851645

QC Batch: 978728

Analysis Method: EPA 200.8

QC Batch Method: EPA 200.8

Analysis Description: 200.8 MET No Prep Drinking Water

Laboratory: Pace Analytical Services - Ormond Beach

Associated Lab Samples: 35851645001, 35851645002, 35851645003

METHOD BLANK: 5384797

Matrix: Water

Associated Lab Samples: 35851645001, 35851645002, 35851645003

Parameter	Units	Blank Result	Reporting Limit	Analyzed	Qualifiers
Lead	ug/L	ND	1.0	01/07/24 23:23	

LABORATORY CONTROL SAMPLE: 5384798

Parameter	Units	Spike Conc.	LCS Result	LCS % Rec	% Rec Limits	Qualifiers
Lead	ug/L	50	50.0	100	85-115	

MATRIX SPIKE & MATRIX SPIKE DUPLICATE: 5384793 5384794

Parameter	Units	35851644012		5384793		5384794		% Rec Limits	RPD	Qual
		MS Result	MSD Spike Conc.	MS Result	MSD Spike Conc.	MS Result	MSD Spike Conc.			
Lead	ug/L	ND	50	50	51.4	51.7	102	102	70-130	1

MATRIX SPIKE & MATRIX SPIKE DUPLICATE: 5384795 5384796

Parameter	Units	35851645003		5384795		5384796		% Rec Limits	RPD	Qual
		MS Result	MSD Spike Conc.	MS Result	MSD Spike Conc.	MS Result	MSD Spike Conc.			
Lead	ug/L	ND	50	50	50.4	50.6	100	100	70-130	0

Results presented on this page are in the units indicated by the "Units" column except where an alternate unit is presented to the right of the result.

REPORT OF LABORATORY ANALYSIS

This report shall not be reproduced, except in full, without the written consent of Pace Analytical Services, LLC.



QUALITY CONTROL DATA

Project: HA00053

Pace Project No.: 35851645

QC Batch:	978754	Analysis Method:	EPA 200.8
QC Batch Method:	EPA 200.8	Analysis Description:	200.8 MET No Prep Drinking Water
		Laboratory:	Pace Analytical Services - Ormond Beach
Associated Lab Samples:	35851645004, 35851645005, 35851645006, 35851645007, 35851645008, 35851645009, 35851645010, 35851645011, 35851645012, 35851645013, 35851645014, 35851645015, 35851645016, 35851645017, 35851645018, 35851645019, 35851645020, 35851645021, 35851645022, 35851645023		

METHOD BLANK:	5385210	Matrix:	Water
Associated Lab Samples:	35851645004, 35851645005, 35851645006, 35851645007, 35851645008, 35851645009, 35851645010, 35851645011, 35851645012, 35851645013, 35851645014, 35851645015, 35851645016, 35851645017, 35851645018, 35851645019, 35851645020, 35851645021, 35851645022, 35851645023		

Parameter	Units	Blank Result	Reporting Limit	Analyzed	Qualifiers
Lead	ug/L	ND	1.0	01/08/24 09:46	

LABORATORY CONTROL SAMPLE:	5385211					
Parameter	Units	Spike Conc.	LCS Result	LCS % Rec	% Rec Limits	Qualifiers
Lead	ug/L	50	51.7	103	85-115	

MATRIX SPIKE & MATRIX SPIKE DUPLICATE:	5385206			5385207							
Parameter	Units	35851645004 Result	MS Spike Conc.	MSD Spike Conc.	MS Result	MSD Result	MS % Rec	MSD % Rec	% Rec Limits	RPD	Qual
Lead	ug/L	2.3	50	50	53.7	53.4	103	102	70-130	1	

MATRIX SPIKE & MATRIX SPIKE DUPLICATE:	5385208			5385209							
Parameter	Units	35851645023 Result	MS Spike Conc.	MSD Spike Conc.	MS Result	MSD Result	MS % Rec	MSD % Rec	% Rec Limits	RPD	Qual
Lead	ug/L	11.0	50	50	61.6	61.9	101	102	70-130	0	

Results presented on this page are in the units indicated by the "Units" column except where an alternate unit is presented to the right of the result.

REPORT OF LABORATORY ANALYSIS

This report shall not be reproduced, except in full, without the written consent of Pace Analytical Services, LLC.



QUALITY CONTROL DATA

Project: HA00053

Pace Project No.: 35851645

QC Batch:	978755	Analysis Method:	EPA 200.8
QC Batch Method:	EPA 200.8	Analysis Description:	200.8 MET No Prep Drinking Water
		Laboratory:	Pace Analytical Services - Ormond Beach
Associated Lab Samples:	35851645024, 35851645025, 35851645026, 35851645027, 35851645028, 35851645029, 35851645030, 35851645031, 35851645032, 35851645033, 35851645034, 35851645035, 35851645036, 35851645037, 35851645038, 35851645039, 35851645040, 35851645041, 35851645042, 35851645043		

METHOD BLANK:	5385216	Matrix:	Water
Associated Lab Samples:	35851645024, 35851645025, 35851645026, 35851645027, 35851645028, 35851645029, 35851645030, 35851645031, 35851645032, 35851645033, 35851645034, 35851645035, 35851645036, 35851645037, 35851645038, 35851645039, 35851645040, 35851645041, 35851645042, 35851645043		

Parameter	Units	Blank Result	Reporting Limit	Analyzed	Qualifiers
Lead	ug/L	ND	1.0	01/08/24 10:31	

LABORATORY CONTROL SAMPLE:	5385217					
Parameter	Units	Spike Conc.	LCS Result	LCS % Rec	% Rec Limits	Qualifiers
Lead	ug/L	50	51.9	104	85-115	

MATRIX SPIKE & MATRIX SPIKE DUPLICATE:	5385212			5385213							
Parameter	Units	35851645024 Result	MS Spike Conc.	MSD Spike Conc.	MS Result	MSD Result	MS % Rec	MSD % Rec	% Rec Limits	RPD	Qual
Lead	ug/L	1.1	50	50	51.8	50.9	101	100	70-130	2	

MATRIX SPIKE & MATRIX SPIKE DUPLICATE:	5385214			5385215							
Parameter	Units	35851645043 Result	MS Spike Conc.	MSD Spike Conc.	MS Result	MSD Result	MS % Rec	MSD % Rec	% Rec Limits	RPD	Qual
Lead	ug/L	ND	50	50	52.2	52.1	104	104	70-130	0	

Results presented on this page are in the units indicated by the "Units" column except where an alternate unit is presented to the right of the result.

REPORT OF LABORATORY ANALYSIS

This report shall not be reproduced, except in full, without the written consent of Pace Analytical Services, LLC.



QUALITY CONTROL DATA

Project: HA00053

Pace Project No.: 35851645

QC Batch:	978756	Analysis Method:	EPA 200.8
QC Batch Method:	EPA 200.8	Analysis Description:	200.8 MET No Prep Drinking Water
		Laboratory:	Pace Analytical Services - Ormond Beach
Associated Lab Samples:	35851645044, 35851645045, 35851645046, 35851645047, 35851645048, 35851645049, 35851645050, 35851645051, 35851645052, 35851645053, 35851645054, 35851645055, 35851645056, 35851645057, 35851645058, 35851645059, 35851645060		

METHOD BLANK:	5385222	Matrix:	Water
Associated Lab Samples:	35851645044, 35851645045, 35851645046, 35851645047, 35851645048, 35851645049, 35851645050, 35851645051, 35851645052, 35851645053, 35851645054, 35851645055, 35851645056, 35851645057, 35851645058, 35851645059, 35851645060		

Parameter	Units	Blank Result	Reporting Limit	Analyzed	Qualifiers
Lead	ug/L	ND	1.0	01/08/24 11:13	

LABORATORY CONTROL SAMPLE:	5385223					
Parameter	Units	Spike Conc.	LCS Result	LCS % Rec	% Rec Limits	Qualifiers
Lead	ug/L	50	51.4	103	85-115	

MATRIX SPIKE & MATRIX SPIKE DUPLICATE:	5385218			5385219							
Parameter	Units	35851645044 Result	MS Spike Conc.	MSD Spike Conc.	MS Result	MSD Result	MS % Rec	MSD % Rec	% Rec Limits	RPD	Qual
Lead	ug/L	ND	50	50	52.1	51.0	104	102	70-130	2	

MATRIX SPIKE & MATRIX SPIKE DUPLICATE:	5385220			5385221							
Parameter	Units	35851646003 Result	MS Spike Conc.	MSD Spike Conc.	MS Result	MSD Result	MS % Rec	MSD % Rec	% Rec Limits	RPD	Qual
Lead	ug/L	9.8	50	50	61.0	60.7	102	102	70-130	1	

Results presented on this page are in the units indicated by the "Units" column except where an alternate unit is presented to the right of the result.

REPORT OF LABORATORY ANALYSIS

This report shall not be reproduced, except in full, without the written consent of Pace Analytical Services, LLC.



QUALIFIERS

Project: HA00053

Pace Project No.: 35851645

DEFINITIONS

DF - Dilution Factor, if reported, represents the factor applied to the reported data due to dilution of the sample aliquot.

ND - Not Detected at or above adjusted reporting limit.

TNTC - Too Numerous To Count

MDL - Adjusted Method Detection Limit.

PQL - Practical Quantitation Limit.

RL - Reporting Limit - The lowest concentration value that meets project requirements for quantitative data with known precision and bias for a specific analyte in a specific matrix.

S - Surrogate

1,2-Diphenylhydrazine decomposes to and cannot be separated from Azobenzene using Method 8270. The result for each analyte is a combined concentration.

Consistent with EPA guidelines, unrounded data are displayed and have been used to calculate % recovery and RPD values.

LCS(D) - Laboratory Control Sample (Duplicate)

MS(D) - Matrix Spike (Duplicate)

DUP - Sample Duplicate

RPD - Relative Percent Difference

NC - Not Calculable.

SG - Silica Gel - Clean-Up

U - Indicates the compound was analyzed for, but not detected.

N-Nitrosodiphenylamine decomposes and cannot be separated from Diphenylamine using Method 8270. The result reported for each analyte is a combined concentration.

Reported results are not rounded until the final step prior to reporting. Therefore, calculated parameters that are typically reported as "Total" may vary slightly from the sum of the reported component parameters.

Pace Analytical is TNI accredited. Contact your Pace PM for the current list of accredited analytes.

TNI - The NELAC Institute.

ANALYTE QUALIFIERS

I The reported value is between the laboratory method detection limit and the laboratory practical quantitation limit.

REPORT OF LABORATORY ANALYSIS

This report shall not be reproduced, except in full,
without the written consent of Pace Analytical Services, LLC.



QUALITY CONTROL DATA CROSS REFERENCE TABLE

Project: HA00053

Pace Project No.: 35851645

Lab ID	Sample ID	QC Batch Method	QC Batch	Analytical Method	Analytical Batch
35851645001	HA00053-01	EPA 200.8	978728		
35851645002	HA00053-02	EPA 200.8	978728		
35851645003	HA00053-03	EPA 200.8	978728		
35851645004	HA00053-04	EPA 200.8	978754		
35851645005	HA00053-05	EPA 200.8	978754		
35851645006	HA00053-06	EPA 200.8	978754		
35851645007	HA00053-07	EPA 200.8	978754		
35851645008	HA00053-08	EPA 200.8	978754		
35851645009	HA00053-09	EPA 200.8	978754		
35851645010	HA00053-10	EPA 200.8	978754		
35851645011	HA00053-11	EPA 200.8	978754		
35851645012	HA00053-12	EPA 200.8	978754		
35851645013	HA00053-13	EPA 200.8	978754		
35851645014	HA00053-14	EPA 200.8	978754		
35851645015	HA00053-15	EPA 200.8	978754		
35851645016	HA00053-16	EPA 200.8	978754		
35851645017	HA00053-17	EPA 200.8	978754		
35851645018	HA00053-18	EPA 200.8	978754		
35851645019	HA00053-19	EPA 200.8	978754		
35851645020	HA00053-20	EPA 200.8	978754		
35851645021	HA00053-21	EPA 200.8	978754		
35851645022	HA00053-22	EPA 200.8	978754		
35851645023	HA00053-23	EPA 200.8	978754		
35851645024	HA00053-24	EPA 200.8	978755		
35851645025	HA00053-25	EPA 200.8	978755		
35851645026	HA00053-26	EPA 200.8	978755		
35851645027	HA00053-27	EPA 200.8	978755		
35851645028	HA00053-28	EPA 200.8	978755		
35851645029	HA00053-29	EPA 200.8	978755		
35851645030	HA00053-30	EPA 200.8	978755		
35851645031	HA00053-31	EPA 200.8	978755		
35851645032	HA00053-32	EPA 200.8	978755		
35851645033	HA00053-33	EPA 200.8	978755		
35851645034	HA00053-34	EPA 200.8	978755		
35851645035	HA00053-35	EPA 200.8	978755		
35851645036	HA00053-36	EPA 200.8	978755		
35851645037	HA00053-37	EPA 200.8	978755		
35851645038	HA00053-38	EPA 200.8	978755		
35851645039	HA00053-39	EPA 200.8	978755		
35851645040	HA00053-40	EPA 200.8	978755		
35851645041	HA00053-41	EPA 200.8	978755		
35851645042	HA00053-42	EPA 200.8	978755		
35851645043	HA00053-43	EPA 200.8	978755		
35851645044	HA00053-44	EPA 200.8	978756		
35851645045	HA00053-45	EPA 200.8	978756		
35851645046	HA00053-46	EPA 200.8	978756		
35851645047	HA00053-47	EPA 200.8	978756		

REPORT OF LABORATORY ANALYSIS

This report shall not be reproduced, except in full, without the written consent of Pace Analytical Services, LLC.



QUALITY CONTROL DATA CROSS REFERENCE TABLE

Project: HA00053

Pace Project No.: 35851645

Lab ID	Sample ID	QC Batch Method	QC Batch	Analytical Method	Analytical Batch
35851645048	HA00053-48	EPA 200.8	978756		
35851645049	HA00053-49	EPA 200.8	978756		
35851645050	HA00053-50	EPA 200.8	978756		
35851645051	HA00053-51	EPA 200.8	978756		
35851645052	HA00053-52	EPA 200.8	978756		
35851645053	HA00053-53	EPA 200.8	978756		
35851645054	HA00053-54	EPA 200.8	978756		
35851645055	HA00053-55	EPA 200.8	978756		
35851645056	HA00053-56	EPA 200.8	978756		
35851645057	HA00053-57	EPA 200.8	978756		
35851645058	HA00053-58	EPA 200.8	978756		
35851645059	HA00053-59	EPA 200.8	978756		
35851645060	HA00053-60	EPA 200.8	978756		
35851645061	HA00053-61	EPA 200.8	978320		
35851645062	HA00053-62	EPA 200.8	978320		
35851645063	HA00053-63	EPA 200.8	978320		
35851645064	HA00053-64	EPA 200.8	978320		
35851645065	HA00053-65	EPA 200.8	978320		
35851645066	HA00053-66	EPA 200.8	978320		
35851645067	HA00053-67	EPA 200.8	978320		
35851645068	HA00053-68	EPA 200.8	978320		
35851645069	HA00053-69	EPA 200.8	978320		

REPORT OF LABORATORY ANALYSIS

This report shall not be reproduced, except in full, without the written consent of Pace Analytical Services, LLC.

WO#: 35851645



35851645

JBCONTRACT ORDER
Transfer Chain of Custody

Pace Analytical Services, LLC

HA00053

SENDING LABORATORY

PDC Laboratories, Inc.
2231 W Altorfer Dr
Peoria, IL 61615
(800) 752-6651

RECEIVING LABORATORY

Pace Analytical - Ormond Beach
8 East Tower Circle
Ormond Beach, FL 32174
(386) 676-4842

Sample: HA00053-01
Name: MHS - 01

Sampled: 12/22/23 17:24
Matrix: Drinking Water
Preservative: HNO3, pH <2

Analysis	Due	Expires	Comments
01-Pb 200.8 DW Schools	01/15/24 16:00	06/19/24 17:24	
01-Pb 200.8 DW Schools	01/15/24 16:00	06/19/24 17:24	

Sample: HA00053-02
Name: MHS - 02

Sampled: 12/22/23 17:28
Matrix: Drinking Water
Preservative: HNO3, pH <2

Analysis	Due	Expires	Comments
01-Pb 200.8 DW Schools	01/15/24 16:00	06/19/24 17:28	
01-Pb 200.8 DW Schools	01/15/24 16:00	06/19/24 17:28	

Sample: HA00053-03
Name: MHS - 03

Sampled: 12/22/23 17:29
Matrix: Drinking Water
Preservative: HNO3, pH <2

Analysis	Due	Expires	Comments
01-Pb 200.8 DW Schools	01/15/24 16:00	06/19/24 17:29	
01-Pb 200.8 DW Schools	01/15/24 16:00	06/19/24 17:29	

Sample: HA00053-04
Name: MHS - 04

Sampled: 12/22/23 17:30
Matrix: Drinking Water
Preservative: HNO3, pH <2

Analysis	Due	Expires	Comments
01-Pb 200.8 DW Schools	01/15/24 16:00	06/19/24 17:30	
01-Pb 200.8 DW Schools	01/15/24 16:00	06/19/24 17:30	

**SUBCONTRACT ORDER
Transfer Chain of Custody**

Pace Analytical Services, LLC

HA00053

SENDING LABORATORY

PDC Laboratories, Inc.
2231 W Altorfer Dr
Peoria, IL 61615
(800) 752-6651

RECEIVING LABORATORY

Pace Analytical - Ormond Beach
8 East Tower Circle
Ormond Beach, FL 32174
(386) 676-4842

Sample: HA00053-05
Name: MHS - 05

Sampled: 12/22/23 17:32
Matrix: Drinking Water
Preservative: HNO3, pH <2

Analysis	Due	Expires	Comments
01-Pb 200.8 DW Schools	01/15/24 16:00	06/19/24 17:32	
01-Pb 200.8 DW Schools	01/15/24 16:00	06/19/24 17:32	

Sample: HA00053-06
Name: MHS - 06

Sampled: 12/22/23 17:34
Matrix: Drinking Water
Preservative: HNO3, pH <2

Analysis	Due	Expires	Comments
01-Pb 200.8 DW Schools	01/15/24 16:00	06/19/24 17:34	
01-Pb 200.8 DW Schools	01/15/24 16:00	06/19/24 17:34	

Sample: HA00053-07
Name: MHS - 07

Sampled: 12/22/23 17:35
Matrix: Drinking Water
Preservative: HNO3, pH <2

Analysis	Due	Expires	Comments
01-Pb 200.8 DW Schools	01/15/24 16:00	06/19/24 17:35	
01-Pb 200.8 DW Schools	01/15/24 16:00	06/19/24 17:35	

Sample: HA00053-08
Name: MHS - 08

Sampled: 12/22/23 17:37
Matrix: Drinking Water
Preservative: HNO3, pH <2

Analysis	Due	Expires	Comments
01-Pb 200.8 DW Schools	01/15/24 16:00	06/19/24 17:37	
01-Pb 200.8 DW Schools	01/15/24 16:00	06/19/24 17:37	

**SUBCONTRACT ORDER
Transfer Chain of Custody**

Pace Analytical Services, LLC

HA00053

SENDING LABORATORY

PDC Laboratories, Inc.
2231 W Altorfer Dr
Peoria, IL 61615
(800) 752-6651

RECEIVING LABORATORY

Pace Analytical - Ormond Beach
8 East Tower Circle
Ormond Beach, FL 32174
(386) 676-4842

Sample: HA00053-09
Name: MHS - 09

Sampled: 12/22/23 17:38
Matrix: Drinking Water
Preservative: HNO₃, pH <2

Analysis	Due	Expires	Comments
-----------------	------------	----------------	-----------------

01-Pb 200.8 DW Schools	01/15/24 16:00	06/19/24 17:38	
01-Pb 200.8 DW Schools	01/15/24 16:00	06/19/24 17:38	

Sample: HA00053-10
Name: MHS - 10

Sampled: 12/22/23 17:38
Matrix: Drinking Water
Preservative: HNO₃, pH <2

Analysis	Due	Expires	Comments
-----------------	------------	----------------	-----------------

01-Pb 200.8 DW Schools	01/15/24 16:00	06/19/24 17:38	
01-Pb 200.8 DW Schools	01/15/24 16:00	06/19/24 17:38	

Sample: HA00053-11
Name: MHS - 11

Sampled: 12/22/23 17:40
Matrix: Drinking Water
Preservative: HNO₃, pH <2

Analysis	Due	Expires	Comments
-----------------	------------	----------------	-----------------

01-Pb 200.8 DW Schools	01/15/24 16:00	06/19/24 17:40	
01-Pb 200.8 DW Schools	01/15/24 16:00	06/19/24 17:40	

Sample: HA00053-12
Name: MHS - 12

Sampled: 12/22/23 17:41
Matrix: Drinking Water
Preservative: HNO₃, pH <2

Analysis	Due	Expires	Comments
-----------------	------------	----------------	-----------------

01-Pb 200.8 DW Schools	01/15/24 16:00	06/19/24 17:41	
01-Pb 200.8 DW Schools	01/15/24 16:00	06/19/24 17:41	

**SUBCONTRACT ORDER
Transfer Chain of Custody**

Pace Analytical Services, LLC

HA00053

SENDING LABORATORY

PDC Laboratories, Inc.
2231 W Altorfer Dr
Peoria, IL 61615
(800) 752-6651

RECEIVING LABORATORY

Pace Analytical - Ormond Beach
8 East Tower Circle
Ormond Beach, FL 32174
(386) 676-4842

Sample: HA00053-13
Name: MHS - 13

Sampled: 12/22/23 17:45
Matrix: Drinking Water
Preservative: HNO₃, pH <2

Analysis	Due	Expires	Comments
01-Pb 200.8 DW Schools	01/15/24 16:00	06/19/24 17:45	
01-Pb 200.8 DW Schools	01/15/24 16:00	06/19/24 17:45	

Sample: HA00053-14
Name: MHS - 14

Sampled: 12/22/23 17:47
Matrix: Drinking Water
Preservative: HNO₃, pH <2

Analysis	Due	Expires	Comments
01-Pb 200.8 DW Schools	01/15/24 16:00	06/19/24 17:47	
01-Pb 200.8 DW Schools	01/15/24 16:00	06/19/24 17:47	

Sample: HA00053-15
Name: MHS - 15

Sampled: 12/22/23 17:48
Matrix: Drinking Water
Preservative: HNO₃, pH <2

Analysis	Due	Expires	Comments
01-Pb 200.8 DW Schools	01/15/24 16:00	06/19/24 17:48	
01-Pb 200.8 DW Schools	01/15/24 16:00	06/19/24 17:48	

Sample: HA00053-16
Name: MHS - 16

Sampled: 12/22/23 17:55
Matrix: Drinking Water
Preservative: HNO₃, pH <2

Analysis	Due	Expires	Comments
01-Pb 200.8 DW Schools	01/15/24 16:00	06/19/24 17:55	
01-Pb 200.8 DW Schools	01/15/24 16:00	06/19/24 17:55	

**SUBCONTRACT ORDER
Transfer Chain of Custody**

Pace Analytical Services, LLC

HA00053

SENDING LABORATORY

PDC Laboratories, Inc.
2231 W Altorfer Dr
Peoria, IL 61615
(800) 752-6651

RECEIVING LABORATORY

Pace Analytical - Ormond Beach
8 East Tower Circle
Ormond Beach, FL 32174
(386) 676-4842

Sample: HA00053-17
Name: MHS - 17

Sampled: 12/22/23 17:58
Matrix: Drinking Water
Preservative: HNO₃, pH <2

Analysis	Due	Expires	Comments
01-Pb 200.8 DW Schools	01/15/24 16:00	06/19/24 17:58	
01-Pb 200.8 DW Schools	01/15/24 16:00	06/19/24 17:58	

Sample: HA00053-18
Name: MHS - 18

Sampled: 12/22/23 17:58
Matrix: Drinking Water
Preservative: HNO₃, pH <2

Analysis	Due	Expires	Comments
01-Pb 200.8 DW Schools	01/15/24 16:00	06/19/24 17:58	
01-Pb 200.8 DW Schools	01/15/24 16:00	06/19/24 17:58	

Sample: HA00053-19
Name: MHS - 19

Sampled: 12/22/23 18:00
Matrix: Drinking Water
Preservative: HNO₃, pH <2

Analysis	Due	Expires	Comments
01-Pb 200.8 DW Schools	01/15/24 16:00	06/19/24 18:00	
01-Pb 200.8 DW Schools	01/15/24 16:00	06/19/24 18:00	

Sample: HA00053-20
Name: MHS - 20

Sampled: 12/22/23 18:01
Matrix: Drinking Water
Preservative: HNO₃, pH <2

Analysis	Due	Expires	Comments
01-Pb 200.8 DW Schools	01/15/24 16:00	06/19/24 18:01	
01-Pb 200.8 DW Schools	01/15/24 16:00	06/19/24 18:01	

**SUBCONTRACT ORDER
Transfer Chain of Custody**

Pace Analytical Services, LLC

HA00053

SENDING LABORATORY

PDC Laboratories, Inc.
2231 W Altorfer Dr
Peoria, IL 61615
(800) 752-6651

RECEIVING LABORATORY

Pace Analytical - Ormond Beach
8 East Tower Circle
Ormond Beach, FL 32174
(386) 676-4842

Sample: HA00053-21
Name: MHS - 21

Sampled: 12/22/23 18:04
Matrix: Drinking Water
Preservative: HNO3, pH <2

Analysis	Due	Expires	Comments
01-Pb 200.8 DW Schools	01/15/24 16:00	06/19/24 18:04	
01-Pb 200.8 DW Schools	01/15/24 16:00	06/19/24 18:04	

Sample: HA00053-22
Name: MHS - 22

Sampled: 12/22/23 18:06
Matrix: Drinking Water
Preservative: HNO3, pH <2

Analysis	Due	Expires	Comments
01-Pb 200.8 DW Schools	01/15/24 16:00	06/19/24 18:06	
01-Pb 200.8 DW Schools	01/15/24 16:00	06/19/24 18:06	

Sample: HA00053-23
Name: MHS - 23

Sampled: 12/22/23 18:08
Matrix: Drinking Water
Preservative: HNO3, pH <2

Analysis	Due	Expires	Comments
01-Pb 200.8 DW Schools	01/15/24 16:00	06/19/24 18:08	
01-Pb 200.8 DW Schools	01/15/24 16:00	06/19/24 18:08	

Sample: HA00053-24
Name: MHS - 24

Sampled: 12/22/23 18:10
Matrix: Drinking Water
Preservative: HNO3, pH <2

Analysis	Due	Expires	Comments
01-Pb 200.8 DW Schools	01/15/24 16:00	06/19/24 18:10	
01-Pb 200.8 DW Schools	01/15/24 16:00	06/19/24 18:10	

**SUBCONTRACT ORDER
Transfer Chain of Custody**

Pace Analytical Services, LLC

HA00053

SENDING LABORATORY

PDC Laboratories, Inc.
2231 W Altorfer Dr
Peoria, IL 61615
(800) 752-6651

RECEIVING LABORATORY

Pace Analytical - Ormond Beach
8 East Tower Circle
Ormond Beach, FL 32174
(386) 676-4842

Sample: HA00053-25
Name: MHS - 25

Sampled: 12/22/23 18:12
Matrix: Drinking Water
Preservative: HNO3, pH <2

Analysis	Due	Expires	Comments
01-Pb 200.8 DW Schools	01/15/24 16:00	06/19/24 18:12	
01-Pb 200.8 DW Schools	01/15/24 16:00	06/19/24 18:12	

Sample: HA00053-26
Name: MHS - 26

Sampled: 12/22/23 18:13
Matrix: Drinking Water
Preservative: HNO3, pH <2

Analysis	Due	Expires	Comments
01-Pb 200.8 DW Schools	01/15/24 16:00	06/19/24 18:13	
01-Pb 200.8 DW Schools	01/15/24 16:00	06/19/24 18:13	

Sample: HA00053-27
Name: MHS - 27

Sampled: 12/22/23 18:14
Matrix: Drinking Water
Preservative: HNO3, pH <2

Analysis	Due	Expires	Comments
01-Pb 200.8 DW Schools	01/15/24 16:00	06/19/24 18:14	
01-Pb 200.8 DW Schools	01/15/24 16:00	06/19/24 18:14	

Sample: HA00053-28
Name: MHS - 28

Sampled: 12/22/23 18:15
Matrix: Drinking Water
Preservative: HNO3, pH <2

Analysis	Due	Expires	Comments
01-Pb 200.8 DW Schools	01/15/24 16:00	06/19/24 18:15	
01-Pb 200.8 DW Schools	01/15/24 16:00	06/19/24 18:15	

**SUBCONTRACT ORDER
Transfer Chain of Custody**

Pace Analytical Services, LLC

HA00053

SENDING LABORATORY

PDC Laboratories, Inc.
2231 W Altorfer Dr
Peoria, IL 61615
(800) 752-6651

RECEIVING LABORATORY

Pace Analytical - Ormond Beach
8 East Tower Circle
Ormond Beach, FL 32174
(386) 676-4842

Sample: HA00053-29
Name: MHS - 29

Sampled: 12/22/23 18:16
Matrix: Drinking Water
Preservative: HNO₃, pH <2

Analysis	Due	Expires	Comments
01-Pb 200.8 DW Schools	01/15/24 16:00	06/19/24 18:16	
01-Pb 200.8 DW Schools	01/15/24 16:00	06/19/24 18:16	

Sample: HA00053-30
Name: MHS - 30

Sampled: 12/22/23 18:17
Matrix: Drinking Water
Preservative: HNO₃, pH <2

Analysis	Due	Expires	Comments
01-Pb 200.8 DW Schools	01/15/24 16:00	06/19/24 18:17	
01-Pb 200.8 DW Schools	01/15/24 16:00	06/19/24 18:17	

Sample: HA00053-31
Name: MHS - 31

Sampled: 12/22/23 18:20
Matrix: Drinking Water
Preservative: HNO₃, pH <2

Analysis	Due	Expires	Comments
01-Pb 200.8 DW Schools	01/15/24 16:00	06/19/24 18:20	
01-Pb 200.8 DW Schools	01/15/24 16:00	06/19/24 18:20	

Sample: HA00053-32
Name: MHS - 32

Sampled: 12/22/23 18:21
Matrix: Drinking Water
Preservative: HNO₃, pH <2

Analysis	Due	Expires	Comments
01-Pb 200.8 DW Schools	01/15/24 16:00	06/19/24 18:21	
01-Pb 200.8 DW Schools	01/15/24 16:00	06/19/24 18:21	

**SUBCONTRACT ORDER
Transfer Chain of Custody
Pace Analytical Services, LLC
HA00053**

SENDING LABORATORY

PDC Laboratories, Inc.
2231 W Altorfer Dr
Peoria, IL 61615
(800) 752-6651

RECEIVING LABORATORY

Pace Analytical - Ormond Beach
8 East Tower Circle
Ormond Beach, FL 32174
(386) 676-4842

Sample: HA00053-33
Name: MHS - 33

Sampled: 12/22/23 18:21
Matrix: Drinking Water
Preservative: HNO₃, pH <2

Analysis	Due	Expires	Comments
01-Pb 200.8 DW Schools	01/15/24 16:00	06/19/24 18:21	
01-Pb 200.8 DW Schools	01/15/24 16:00	06/19/24 18:21	

Sample: HA00053-34
Name: MHS - 34

Sampled: 12/22/23 18:22
Matrix: Drinking Water
Preservative: HNO₃, pH <2

Analysis	Due	Expires	Comments
01-Pb 200.8 DW Schools	01/15/24 16:00	06/19/24 18:22	
01-Pb 200.8 DW Schools	01/15/24 16:00	06/19/24 18:22	

Sample: HA00053-35
Name: MHS - 35

Sampled: 12/22/23 18:23
Matrix: Drinking Water
Preservative: HNO₃, pH <2

Analysis	Due	Expires	Comments
01-Pb 200.8 DW Schools	01/15/24 16:00	06/19/24 18:23	
01-Pb 200.8 DW Schools	01/15/24 16:00	06/19/24 18:23	

Sample: HA00053-36
Name: MHS - 36

Sampled: 12/22/23 18:25
Matrix: Drinking Water
Preservative: HNO₃, pH <2

Analysis	Due	Expires	Comments
01-Pb 200.8 DW Schools	01/15/24 16:00	06/19/24 18:25	
01-Pb 200.8 DW Schools	01/15/24 16:00	06/19/24 18:25	

SUBCONTRACT ORDER
Transfer Chain of Custody
Pace Analytical Services, LLC
HA00053

SENDING LABORATORY

PDC Laboratories, Inc.
 2231 W Altorfer Dr
 Peoria, IL 61615
 (800) 752-6651

RECEIVING LABORATORY

Pace Analytical - Ormond Beach
 8 East Tower Circle
 Ormond Beach, FL 32174
 (386) 676-4842

Sample: HA00053-37
Name: MHS - 37

Sampled: 12/22/23 18:27
Matrix: Drinking Water
Preservative: HNO3, pH <2

Analysis	Due	Expires	Comments
01-Pb 200.8 DW Schools	01/15/24 16:00	06/19/24 18:27	
01-Pb 200.8 DW Schools	01/15/24 16:00	06/19/24 18:27	

Sample: HA00053-38
Name: MHS - 38

Sampled: 12/22/23 18:32
Matrix: Drinking Water
Preservative: HNO3, pH <2

Analysis	Due	Expires	Comments
01-Pb 200.8 DW Schools	01/15/24 16:00	06/19/24 18:32	
01-Pb 200.8 DW Schools	01/15/24 16:00	06/19/24 18:32	

Sample: HA00053-39
Name: MHS - 39

Sampled: 12/22/23 18:34
Matrix: Drinking Water
Preservative: HNO3, pH <2

Analysis	Due	Expires	Comments
01-Pb 200.8 DW Schools	01/15/24 16:00	06/19/24 18:34	
01-Pb 200.8 DW Schools	01/15/24 16:00	06/19/24 18:34	

Sample: HA00053-40
Name: MHS - 40

Sampled: 12/22/23 18:35
Matrix: Drinking Water
Preservative: HNO3, pH <2

Analysis	Due	Expires	Comments
01-Pb 200.8 DW Schools	01/15/24 16:00	06/19/24 18:35	
01-Pb 200.8 DW Schools	01/15/24 16:00	06/19/24 18:35	

**SUBCONTRACT ORDER
Transfer Chain of Custody**

Pace Analytical Services, LLC

HA00053

SENDING LABORATORY

PDC Laboratories, Inc.
2231 W Altorfer Dr
Peoria, IL 61615
(800) 752-6651

RECEIVING LABORATORY

Pace Analytical - Ormond Beach
8 East Tower Circle
Ormond Beach, FL 32174
(386) 676-4842

Sample: HA00053-41
Name: MHS - 41

Sampled: 12/22/23 18:37
Matrix: Drinking Water
Preservative: HNO3, pH <2

Analysis	Due	Expires	Comments
01-Pb 200.8 DW Schools	01/15/24 16:00	06/19/24 18:37	
01-Pb 200.8 DW Schools	01/15/24 16:00	06/19/24 18:37	

Sample: HA00053-42
Name: MHS - 42

Sampled: 12/22/23 18:38
Matrix: Drinking Water
Preservative: HNO3, pH <2

Analysis	Due	Expires	Comments
01-Pb 200.8 DW Schools	01/15/24 16:00	06/19/24 18:38	
01-Pb 200.8 DW Schools	01/15/24 16:00	06/19/24 18:38	

Sample: HA00053-43
Name: MHS - 43

Sampled: 12/22/23 18:40
Matrix: Drinking Water
Preservative: HNO3, pH <2

Analysis	Due	Expires	Comments
01-Pb 200.8 DW Schools	01/15/24 16:00	06/19/24 18:40	
01-Pb 200.8 DW Schools	01/15/24 16:00	06/19/24 18:40	

Sample: HA00053-44
Name: MHS - 44

Sampled: 12/22/23 18:46
Matrix: Drinking Water
Preservative: HNO3, pH <2

Analysis	Due	Expires	Comments
01-Pb 200.8 DW Schools	01/15/24 16:00	06/19/24 18:46	
01-Pb 200.8 DW Schools	01/15/24 16:00	06/19/24 18:46	

**SUBCONTRACT ORDER
Transfer Chain of Custody**

Pace Analytical Services, LLC

HA00053

SENDING LABORATORY

PDC Laboratories, Inc.
2231 W Altorfer Dr
Peoria, IL 61615
(800) 752-6651

RECEIVING LABORATORY

Pace Analytical - Ormond Beach
8 East Tower Circle
Ormond Beach, FL 32174
(386) 676-4842

Sample: HA00053-45
Name: MHS - 45

Sampled: 12/22/23 18:48
Matrix: Drinking Water
Preservative: HNO3, pH <2

Analysis	Due	Expires	Comments
01-Pb 200.8 DW Schools	01/15/24 16:00	06/19/24 18:48	
01-Pb 200.8 DW Schools	01/15/24 16:00	06/19/24 18:48	

Sample: HA00053-46
Name: MHS - 46

Sampled: 12/22/23 18:51
Matrix: Drinking Water
Preservative: HNO3, pH <2

Analysis	Due	Expires	Comments
01-Pb 200.8 DW Schools	01/15/24 16:00	06/19/24 18:51	
01-Pb 200.8 DW Schools	01/15/24 16:00	06/19/24 18:51	

Sample: HA00053-47
Name: MHS - 47

Sampled: 12/22/23 18:52
Matrix: Drinking Water
Preservative: HNO3, pH <2

Analysis	Due	Expires	Comments
01-Pb 200.8 DW Schools	01/15/24 16:00	06/19/24 18:52	
01-Pb 200.8 DW Schools	01/15/24 16:00	06/19/24 18:52	

Sample: HA00053-48
Name: MHS - 48

Sampled: 12/22/23 18:53
Matrix: Drinking Water
Preservative: HNO3, pH <2

Analysis	Due	Expires	Comments
01-Pb 200.8 DW Schools	01/15/24 16:00	06/19/24 18:53	
01-Pb 200.8 DW Schools	01/15/24 16:00	06/19/24 18:53	

**SUBCONTRACT ORDER
Transfer Chain of Custody**

Pace Analytical Services, LLC

HA00053

SENDING LABORATORY

PDC Laboratories, Inc.
2231 W Altorfer Dr
Peoria, IL 61615
(800) 752-6651

RECEIVING LABORATORY

Pace Analytical - Ormond Beach
8 East Tower Circle
Ormond Beach, FL 32174
(386) 676-4842

Sample: HA00053-49
Name: MHS - 49

Sampled: 12/22/23 18:54
Matrix: Drinking Water
Preservative: HNO₃, pH <2

Analysis	Due	Expires	Comments
01-Pb 200.8 DW Schools	01/15/24 16:00	06/19/24 18:54	
01-Pb 200.8 DW Schools	01/15/24 16:00	06/19/24 18:54	

Sample: HA00053-50
Name: MHS - 50

Sampled: 12/22/23 18:57
Matrix: Drinking Water
Preservative: HNO₃, pH <2

Analysis	Due	Expires	Comments
01-Pb 200.8 DW Schools	01/15/24 16:00	06/19/24 18:57	
01-Pb 200.8 DW Schools	01/15/24 16:00	06/19/24 18:57	

Sample: HA00053-51
Name: MHS - 51

Sampled: 12/22/23 18:59
Matrix: Drinking Water
Preservative: HNO₃, pH <2

Analysis	Due	Expires	Comments
01-Pb 200.8 DW Schools	01/15/24 16:00	06/19/24 18:59	
01-Pb 200.8 DW Schools	01/15/24 16:00	06/19/24 18:59	

Sample: HA00053-52
Name: MHS - 52

Sampled: 12/22/23 19:01
Matrix: Drinking Water
Preservative: HNO₃, pH <2

Analysis	Due	Expires	Comments
01-Pb 200.8 DW Schools	01/15/24 16:00	06/19/24 19:01	
01-Pb 200.8 DW Schools	01/15/24 16:00	06/19/24 19:01	

SUBCONTRACT ORDER
Transfer Chain of Custody
Pace Analytical Services, LLC
HA00053

SENDING LABORATORY

PDC Laboratories, Inc.
 2231 W Altorfer Dr
 Peoria, IL 61615
 (800) 752-6651

RECEIVING LABORATORY

Pace Analytical - Ormond Beach
 8 East Tower Circle
 Ormond Beach, FL 32174
 (386) 676-4842

Sample: HA00053-53
Name: MHS - 53

Sampled: 12/22/23 19:02
Matrix: Drinking Water
Preservative: HNO3, pH <2

Analysis	Due	Expires	Comments
01-Pb 200.8 DW Schools	01/15/24 16:00	06/19/24 19:02	
01-Pb 200.8 DW Schools	01/15/24 16:00	06/19/24 19:02	

Sample: HA00053-54
Name: MHS - 54

Sampled: 12/22/23 19:03
Matrix: Drinking Water
Preservative: HNO3, pH <2

Analysis	Due	Expires	Comments
01-Pb 200.8 DW Schools	01/15/24 16:00	06/19/24 19:03	
01-Pb 200.8 DW Schools	01/15/24 16:00	06/19/24 19:03	

Sample: HA00053-55
Name: MHS - 55

Sampled: 12/22/23 19:05
Matrix: Drinking Water
Preservative: HNO3, pH <2

Analysis	Due	Expires	Comments
01-Pb 200.8 DW Schools	01/15/24 16:00	06/19/24 19:05	
01-Pb 200.8 DW Schools	01/15/24 16:00	06/19/24 19:05	

Sample: HA00053-56
Name: MHS - 56

Sampled: 12/22/23 19:06
Matrix: Drinking Water
Preservative: HNO3, pH <2

Analysis	Due	Expires	Comments
01-Pb 200.8 DW Schools	01/15/24 16:00	06/19/24 19:06	
01-Pb 200.8 DW Schools	01/15/24 16:00	06/19/24 19:06	

**SUBCONTRACT ORDER
Transfer Chain of Custody**

Pace Analytical Services, LLC

HA00053

SENDING LABORATORY

PDC Laboratories, Inc.
2231 W Altorfer Dr
Peoria, IL 61615
(800) 752-6651

RECEIVING LABORATORY

Pace Analytical - Ormond Beach
8 East Tower Circle
Ormond Beach, FL 32174
(386) 676-4842

Sample: HA00053-57
Name: MHS - 57

Sampled: 12/22/23 19:08
Matrix: Drinking Water
Preservative: HNO3, pH <2

Analysis	Due	Expires	Comments
01-Pb 200.8 DW Schools	01/15/24 16:00	06/19/24 19:08	
01-Pb 200.8 DW Schools	01/15/24 16:00	06/19/24 19:08	

Sample: HA00053-58
Name: MHS - 58

Sampled: 12/22/23 19:19
Matrix: Drinking Water
Preservative: HNO3, pH <2

Analysis	Due	Expires	Comments
01-Pb 200.8 DW Schools	01/15/24 16:00	06/19/24 19:19	
01-Pb 200.8 DW Schools	01/15/24 16:00	06/19/24 19:19	

Sample: HA00053-59
Name: MHS - 59

Sampled: 12/22/23 19:20
Matrix: Drinking Water
Preservative: HNO3, pH <2

Analysis	Due	Expires	Comments
01-Pb 200.8 DW Schools	01/15/24 16:00	06/19/24 19:20	
01-Pb 200.8 DW Schools	01/15/24 16:00	06/19/24 19:20	

Sample: HA00053-60
Name: MHS - 60

Sampled: 12/22/23 19:21
Matrix: Drinking Water
Preservative: HNO3, pH <2

Analysis	Due	Expires	Comments
01-Pb 200.8 DW Schools	01/15/24 16:00	06/19/24 19:21	
01-Pb 200.8 DW Schools	01/15/24 16:00	06/19/24 19:21	

**SUBCONTRACT ORDER
Transfer Chain of Custody**

Pace Analytical Services, LLC

HA00053

SENDING LABORATORY

PDC Laboratories, Inc.
2231 W Altorfer Dr
Peoria, IL 61615
(800) 752-6651

RECEIVING LABORATORY

Pace Analytical - Ormond Beach
8 East Tower Circle
Ormond Beach, FL 32174
(386) 676-4842

Sample: HA00053-61
Name: MHS - 61

Sampled: 12/22/23 19:23
Matrix: Drinking Water
Preservative: HNO3, pH <2

Analysis	Due	Expires	Comments
01-Pb 200.8 DW Schools	01/15/24 16:00	06/19/24 19:23	
01-Pb 200.8 DW Schools	01/15/24 16:00	06/19/24 19:23	

Sample: HA00053-62
Name: MHS - 62

Sampled: 12/22/23 19:24
Matrix: Drinking Water
Preservative: HNO3, pH <2

Analysis	Due	Expires	Comments
01-Pb 200.8 DW Schools	01/15/24 16:00	06/19/24 19:24	
01-Pb 200.8 DW Schools	01/15/24 16:00	06/19/24 19:24	

Sample: HA00053-63
Name: MHS - 63

Sampled: 12/22/23 19:26
Matrix: Drinking Water
Preservative: HNO3, pH <2

Analysis	Due	Expires	Comments
01-Pb 200.8 DW Schools	01/15/24 16:00	06/19/24 19:26	
01-Pb 200.8 DW Schools	01/15/24 16:00	06/19/24 19:26	

Sample: HA00053-64
Name: MHS - 64

Sampled: 12/22/23 19:28
Matrix: Drinking Water
Preservative: HNO3, pH <2

Analysis	Due	Expires	Comments
01-Pb 200.8 DW Schools	01/15/24 16:00	06/19/24 19:28	
01-Pb 200.8 DW Schools	01/15/24 16:00	06/19/24 19:28	

**SUBCONTRACT ORDER
Transfer Chain of Custody**

Pace Analytical Services, LLC

HA00053

SENDING LABORATORY

PDC Laboratories, Inc.
2231 W Altorfer Dr
Peoria, IL 61615
(800) 752-6651

RECEIVING LABORATORY

Pace Analytical - Ormond Beach
8 East Tower Circle
Ormond Beach, FL 32174
(386) 676-4842

Sample: HA00053-65
Name: MHS - 65

Sampled: 12/22/23 19:28
Matrix: Drinking Water
Preservative: HNO₃, pH <2

Analysis	Due	Expires	Comments
01-Pb 200.8 DW Schools	01/15/24 16:00	06/19/24 19:28	
01-Pb 200.8 DW Schools	01/15/24 16:00	06/19/24 19:28	

Sample: HA00053-66
Name: MHS - 66

Sampled: 12/22/23 19:31
Matrix: Drinking Water
Preservative: HNO₃, pH <2

Analysis	Due	Expires	Comments
01-Pb 200.8 DW Schools	01/15/24 16:00	06/19/24 19:31	
01-Pb 200.8 DW Schools	01/15/24 16:00	06/19/24 19:31	

Sample: HA00053-67
Name: MHS - 67

Sampled: 12/22/23 19:32
Matrix: Drinking Water
Preservative: HNO₃, pH <2

Analysis	Due	Expires	Comments
01-Pb 200.8 DW Schools	01/15/24 16:00	06/19/24 19:32	
01-Pb 200.8 DW Schools	01/15/24 16:00	06/19/24 19:32	

Sample: HA00053-68
Name: MHS - 68

Sampled: 12/22/23 19:35
Matrix: Drinking Water
Preservative: HNO₃, pH <2

Analysis	Due	Expires	Comments
01-Pb 200.8 DW Schools	01/15/24 16:00	06/19/24 19:35	
01-Pb 200.8 DW Schools	01/15/24 16:00	06/19/24 19:35	

**SUBCONTRACT ORDER
Transfer Chain of Custody**

Pace Analytical Services, LLC

HA00053

SENDING LABORATORY

PDC Laboratories, Inc.
2231 W Altorfer Dr
Peoria, IL 61615
(800) 752-6651

RECEIVING LABORATORY

Pace Analytical - Ormond Beach
8 East Tower Circle
Ormond Beach, FL 32174
(386) 676-4842

Sample: HA00053-69
Name: MHS - 69

Sampled: 12/22/23 19:36
Matrix: Drinking Water
Preservative: HNO3, pH <2

Analysis	Due	Expires	Comments
01-Pb 200.8 DW Schools	01/15/24 16:00	06/19/24 19:36	
01-Pb 200.8 DW Schools	01/15/24 16:00	06/19/24 19:36	

Please email results to Chenise Lambert-Sykes at Chenise.Lambert-Sykes@pacelabs.com

Date Shipped: 1/3/24 Total # of Containers: 68 Sample Origin (State): _____ PO #: _____

Turn-Around Time Requested NORMAL RUSH Date Results Needed: 1/14/24

Relinquished By	Date/Time	Received By	Date/Time	Sample Temperature Upon Receipt	_____ °C
<u>[Signature]</u>	<u>1/3/24 14:57</u>	<u>No Pace</u>	<u>1-4-24 10:25</u>	Sample(s) Received on Ice	Y or N
				Proper Bottles Received in Good Condition	Y or N
				Bottles Filled with Adequate Volume	Y or N
				Samples Received Within Hold Time	Y or N
				Date/Time Taken From Sample Bottle	Y or N



Sample Condition Upon Receipt Form (SCUR)

Project #
Project Manager:
Client:

WO#: 35851645
PM: BTS Due Date: 01/11/24
CLIENT: PACHAZ

Date and Initials of person:
Examining contents: JRS
Label:
Deliver: NPI
pH:
Initials: ZRB

Thermometer Used: T-409

Date: 1/4/24

Time: 1027

State of Origin:			<input type="checkbox"/> For WV projects, all containers verified to $\pm 0.6^\circ\text{C}$
Cooler #1 Temp. $^\circ\text{C}$	13.7 (Visual)	-0.1 (Correction Factor)	13.6 (Actual)
Cooler #2 Temp. $^\circ\text{C}$	13.5 (Visual)	(Correction Factor)	13.4 (Actual)
Cooler #3 Temp. $^\circ\text{C}$	14.8 (Visual)	(Correction Factor)	14.7 (Actual)
Cooler #4 Temp. $^\circ\text{C}$	15.3 (Visual)	(Correction Factor)	15.2 (Actual)
Cooler #5 Temp. $^\circ\text{C}$	16.0 (Visual)	(Correction Factor)	15.9 (Actual)
Cooler #6 Temp. $^\circ\text{C}$	15.7 (Visual)	(Correction Factor)	15.6 (Actual)
Recheck for OOT $^\circ\text{C}$	14.4 (Visual)	(Correction Factor)	14.3 (Actual)

- Samples on ice, cooling process has begun.
 - Samples on ice, cooling process has begun.
 - Samples on ice, cooling process has begun.
 - Samples on ice, cooling process has begun.
 - Samples on ice, cooling process has begun.
 - Samples on ice, cooling process has begun.
- Time: _____ Initials: _____

Courier: Fed Ex UPS USPS Client Commercial Pace Other

Shipping Method: Standard Overnight First Overnight Priority Overnight Ground International Priority Other

Billing: Recipient Sender Third Party Credit Card Unknown Other

Tracking # 7003 7810 9830 / 7003 7810 9851

Custody Seal Present: Yes No Seal properly placed and intact: Yes No

Packing Material: Bubble Wrap Bubble Bags None Other

Ice: Wet Blue Dry None Melted

Samples shorted to lab: Yes No (if yes, complete the following)

Shorted Date: _____

Bottle Quantity / Type: _____

Shorted Time: _____

Chain of Custody:	Present: <input checked="" type="checkbox"/> Yes <input type="checkbox"/> No Filled Out: <input checked="" type="checkbox"/> Yes <input type="checkbox"/> No <input type="checkbox"/> N/A Sampler Name: <input type="checkbox"/> Yes <input type="checkbox"/> No <input checked="" type="checkbox"/> N/A
	Relinquished To Pace: <input checked="" type="checkbox"/> Yes <input type="checkbox"/> No <input type="checkbox"/> N/A Sampling Date(s): <input checked="" type="checkbox"/> Yes <input type="checkbox"/> No <input type="checkbox"/> N/A Sampling Time(s): <input checked="" type="checkbox"/> Yes <input type="checkbox"/> No <input type="checkbox"/> N/A
Samples Arrived within Hold Time	<input checked="" type="checkbox"/> Yes <input type="checkbox"/> No <input type="checkbox"/> N/A Comments:
Rush Turnaround Requested on COC.	<input type="checkbox"/> Yes <input type="checkbox"/> No <input type="checkbox"/> N/A Comments:
Sufficient Volume.	<input checked="" type="checkbox"/> Yes <input type="checkbox"/> No <input type="checkbox"/> N/A Comments:
Correct Containers Used.	<input checked="" type="checkbox"/> Yes <input type="checkbox"/> No <input type="checkbox"/> N/A Comments:
Containers Intact.	<input checked="" type="checkbox"/> Yes <input type="checkbox"/> No <input type="checkbox"/> N/A Comments:
Sample Labels Match COC (Sample ID, Date/Time of Collection).	<input checked="" type="checkbox"/> Yes <input type="checkbox"/> No <input type="checkbox"/> N/A Comments:
Containers needing acid / base preservation have been checked.	<input checked="" type="checkbox"/> Yes <input type="checkbox"/> No <input type="checkbox"/> N/A Comments:
Containers needing preservation are found to be in compliance with A recommendation:	<input checked="" type="checkbox"/> Yes <input type="checkbox"/> No <input type="checkbox"/> N/A
Exceptions: Vials, Microbiology, O&G, PFAS	
Space in Volatile Vials? (>6mm):	<input type="checkbox"/> Yes <input type="checkbox"/> No <input checked="" type="checkbox"/> N/A
Blank Present:	<input type="checkbox"/> Yes <input type="checkbox"/> No <input checked="" type="checkbox"/> N/A
Comments / Resolutions (use back for additional comments):	

Preservation Information

Preservative: _____ Date: _____

Lot / Trace: _____ Time: _____

Amount added (mL): _____ Initials: _____



Sample Condition Upon Receipt Form (SCUR)

Date and Initials of person: _____

Examining contents: _____

Label: _____

Deliver: NDI

pH: _____

Initials: ZAB

Project # _____
Project Manager: _____
Client: _____

1025

Thermometer Used: T-409

Date: 1/14/24

Time: 1027

State of Origin: _____

For WV projects, all containers verified to ≤6 °C

Cooler #1 Temp. °C	<u>14.4</u> (Visual)	<u>0.1</u> (Correction Factor)	<u>14.9</u> (Actual)
Cooler #2 Temp. °C	<u>15.9</u> (Visual)		<u>15.8</u> (Actual)
Cooler #3 Temp. °C	<u>13.7</u> (Visual)		<u>13.6</u> (Actual)
Cooler #4 Temp. °C	<u>14.2</u> (Visual)		<u>14.1</u> (Actual)
Cooler #5 Temp. °C	<u>14.8</u> (Visual)		<u>14.7</u> (Actual)
Cooler #6 Temp. °C	<u>15.1</u> (Visual)		<u>15.0</u> (Actual)
Recheck for OOT °C	<u>16.2</u> (Visual)		<u>16.1</u> (Actual)

- Samples on ice, cooling process has begun.
- Samples on ice, cooling process has begun.
- Samples on ice, cooling process has begun.
- Samples on ice, cooling process has begun.
- Samples on ice, cooling process has begun.
- Samples on ice, cooling process has begun.

Time: _____ Initials: _____

Courier: Fed Ex UPS USPS Client Commercial Pace Other: _____

Shipping Method: Standard Overnight First Overnight Priority Overnight Ground International Priority Other: _____

Billing: Recipient Sender Third Party Credit Card Unknown

Tracking # _____

Custody Seal Present: Yes No Seal properly placed and intact: Yes No

Ice: Wet Blue Dry None Melted

Packing Material: Bubble Wrap Bubble Bags None Other: _____

Samples shorted to lab: Yes No (If yes, complete the following)

Shorted Date: _____

Shorted Time: _____

Bottle Quantity / Type: _____

Chain of Custody:	Present: <input type="checkbox"/> Yes <input type="checkbox"/> No Filled Out: <input type="checkbox"/> Yes <input type="checkbox"/> No <input type="checkbox"/> N/A Sampler Name: <input type="checkbox"/> Yes <input type="checkbox"/> No <input type="checkbox"/> N/A	Comments:								
	Relinquished To Pace: <input type="checkbox"/> Yes <input type="checkbox"/> No <input type="checkbox"/> N/A Sampling Date(s): <input type="checkbox"/> Yes <input type="checkbox"/> No <input type="checkbox"/> N/A Sampling Time(s): <input type="checkbox"/> Yes <input type="checkbox"/> No <input type="checkbox"/> N/A									
Samples Arrived within Hold Time.	<input type="checkbox"/> Yes <input type="checkbox"/> No <input type="checkbox"/> N/A	Comments:								
Rush Turnaround Requested on COC.	<input type="checkbox"/> Yes <input type="checkbox"/> No <input type="checkbox"/> N/A	Comments:								
Sufficient Volume.	<input type="checkbox"/> Yes <input type="checkbox"/> No <input type="checkbox"/> N/A	Comments:								
Correct Containers Used.	<input type="checkbox"/> Yes <input type="checkbox"/> No <input type="checkbox"/> N/A	Comments:								
Containers Intact.	<input type="checkbox"/> Yes <input type="checkbox"/> No <input type="checkbox"/> N/A	Comments:								
Sample Labels Match COC (Sample ID, Date/Time of Collection).	<input type="checkbox"/> Yes <input type="checkbox"/> No <input type="checkbox"/> N/A	Comments:								
All containers needing acid / base preservation have been checked.	<input type="checkbox"/> Yes <input type="checkbox"/> No <input type="checkbox"/> N/A	<table border="1"> <tr> <th colspan="2">Preservation Information</th> </tr> <tr> <td>Preservative: _____</td> <td>Date: _____</td> </tr> <tr> <td>Lot / Trace: _____</td> <td>Time: _____</td> </tr> <tr> <td>Amount added (mL): _____</td> <td>Initials: _____</td> </tr> </table>	Preservation Information		Preservative: _____	Date: _____	Lot / Trace: _____	Time: _____	Amount added (mL): _____	Initials: _____
Preservation Information										
Preservative: _____	Date: _____									
Lot / Trace: _____	Time: _____									
Amount added (mL): _____	Initials: _____									
All containers needing preservation are found to be in compliance with EPA recommendation: <small>Exceptions: Vials, Microbiology, O&G, PFAS</small>	<input type="checkbox"/> Yes <input type="checkbox"/> No <input type="checkbox"/> N/A									
Headspace in Volatile Vials? (>6mm):	<input type="checkbox"/> Yes <input type="checkbox"/> No <input type="checkbox"/> N/A									
Trip Blank Present:	<input type="checkbox"/> Yes <input type="checkbox"/> No <input type="checkbox"/> N/A									

Comments / Resolutions (use back for additional comments): _____



Sample Condition Upon Receipt Form (SCUR)

Project #
 Project Manager:
 Client:

1025

Date and Initials of person:

Examining contents: _____

Label: _____

Deliver: NA

pH: _____

Initials: ZNB

Thermometer Used: T-409

Date: 11/4/24

Time: 1027

State of Origin: _____

For WV projects, all containers verified to ≤6 °C

Cooler #1 Temp. °C	<u>16.4</u> (Visual)	<u>0.1</u> (Correction Factor)	<u>16.3</u> (Actual)
Cooler #2 Temp. °C	<u>17.2</u> (Visual)	_____ (Correction Factor)	<u>17.1</u> (Actual)
Cooler #3 Temp. °C	<u>15.6</u> (Visual)	_____ (Correction Factor)	<u>15.5</u> (Actual)
Cooler #4 Temp. °C	<u>14.5</u> (Visual)	_____ (Correction Factor)	<u>14.4</u> (Actual)
Cooler #5 Temp. °C	<u>15.8</u> (Visual)	_____ (Correction Factor)	<u>15.7</u> (Actual)
Cooler #6 Temp. °C	<u>16.3</u> (Visual)	_____ (Correction Factor)	<u>16.2</u> (Actual)

- Samples on ice, cooling process has begun.
- Samples on ice, cooling process has begun.
- Samples on ice, cooling process has begun.
- Samples on ice, cooling process has begun.
- Samples on ice, cooling process has begun.
- Samples on ice, cooling process has begun.

Recheck for OOT °C _____ (Visual) _____ (Correction Factor) _____ (Actual)

Time: _____ Initials: _____

Courier: Fed Ex UPS USPS Client Commercial Pace Other: _____

Shipping Method: Standard Overnight First Overnight Priority Overnight Ground International Priority Other: _____

Billing: Recipient Sender Third Party Credit Card Unknown

Tracking # _____

Custody Seal Present: Yes No Seal properly placed and intact: Yes No

Ice: Wet Blue Dry None Melted

Packing Material: Bubble Wrap Bubble Bags None Other: _____

Samples shorted to lab: Yes No (If yes, complete the following)

Shorted Date: _____

Shorted Time: _____

Bottle Quantity / Type: _____

Chain of Custody:	Present: <input type="checkbox"/> Yes <input type="checkbox"/> No Filled Out: <input type="checkbox"/> Yes <input type="checkbox"/> No <input type="checkbox"/> N/A Sampler Name: <input type="checkbox"/> Yes <input type="checkbox"/> No <input type="checkbox"/> N/A								
	Relinquished To Pace: <input type="checkbox"/> Yes <input type="checkbox"/> No <input type="checkbox"/> N/A Sampling Date(s): <input type="checkbox"/> Yes <input type="checkbox"/> No <input type="checkbox"/> N/A Sampling Time(s): <input type="checkbox"/> Yes <input type="checkbox"/> No <input type="checkbox"/> N/A								
Samples Arrived within Hold Time.	<input type="checkbox"/> Yes <input type="checkbox"/> No <input type="checkbox"/> N/A Comments: _____								
Rush Turnaround Requested on COC.	<input type="checkbox"/> Yes <input type="checkbox"/> No <input type="checkbox"/> N/A Comments: _____								
Sufficient Volume.	<input type="checkbox"/> Yes <input type="checkbox"/> No <input type="checkbox"/> N/A Comments: _____								
Correct Containers Used.	<input type="checkbox"/> Yes <input type="checkbox"/> No <input type="checkbox"/> N/A Comments: _____								
Containers Intact.	<input type="checkbox"/> Yes <input type="checkbox"/> No <input type="checkbox"/> N/A Comments: _____								
Sample Labels Match COC (Sample ID, Date/Time of Collection).	<input type="checkbox"/> Yes <input type="checkbox"/> No <input type="checkbox"/> N/A Comments: _____								
All containers needing acid / base preservation have been checked.	<input type="checkbox"/> Yes <input type="checkbox"/> No <input type="checkbox"/> N/A								
All containers needing preservation are found to be in compliance with EPA recommendation.	<input type="checkbox"/> Yes <input type="checkbox"/> No <input type="checkbox"/> N/A								
Exceptions: Vials, Microbiology, O&G, PFAS									
Headspace in Volatile Vials? (>6mm):	<input type="checkbox"/> Yes <input type="checkbox"/> No <input type="checkbox"/> N/A								
Trip Blank Present:	<input type="checkbox"/> Yes <input type="checkbox"/> No <input type="checkbox"/> N/A								
<table border="1"> <thead> <tr> <th colspan="2">Preservation Information</th> </tr> </thead> <tbody> <tr> <td>Preservative: _____</td> <td>Date: _____</td> </tr> <tr> <td>Lot / Trace: _____</td> <td>Time: _____</td> </tr> <tr> <td>Amount added (mL): _____</td> <td>Initials: _____</td> </tr> </tbody> </table>		Preservation Information		Preservative: _____	Date: _____	Lot / Trace: _____	Time: _____	Amount added (mL): _____	Initials: _____
Preservation Information									
Preservative: _____	Date: _____								
Lot / Trace: _____	Time: _____								
Amount added (mL): _____	Initials: _____								

Comments / Resolutions (use back for additional comments): _____

REGULATORY PROGRAM (CIRCLE):	NPDES
MORBCA	RCRA
CCDD	TACO; RES OR IND/COMM

CHAIN OF CUSTODY RECORD

STATE WHERE SAMPLE COLLECTED MO

ALL HIGHLIGHTED AREAS MUST BE COMPLETED BY CLIENT (PLEASE PRINT)

1 CLIENT SCI Engineering	PROJECT NUMBER 2016-0860-21	PROJECT LOCATION Mehlville HS	PURCHASE ORDER #	3 ANALYSIS REQUESTED	4 (FOR LAB USE ONLY) FLA00053
ADDRESS 130 Point West Blvd	PHONE NUMBER (314) 581-7570	E-MAIL ggriessom@sciengineering.com	DATE SHIPPED	<input checked="" type="checkbox"/> DW Pb	LOGIN # SAS
CITY STATE ZIP St. Charles, MO 63301	SAMPLER (PLEASE PRINT) Dan Vreelwiker	SAMPLER'S SIGNATURE <i>[Signature]</i>	MATRIX TYPES: WW- WASTEWATER DW- DRINKING WATER GW- GROUND WATER WWSL- SLUDGE NAS- NON AQUEOUS SOLID LCHL- LEACHATE OIL- OIL SO- SOIL SOL- SOLID	<input checked="" type="checkbox"/> Turb Check	LOGGED BY: SAS
CONTACT PERSON Glen Grissom					CLIENT: SCI Engineering PROJECT: Drinking Water Lead PROJ. MGR.: Chenise Lambert-Sykes CUSTODY SEAL #:

2 SAMPLE DESCRIPTION (UNIQUE DESCRIPTION AS IT WILL APPEAR ON THE ANALYTICAL REPORT)	DATE COLLECTED	TIME COLLECTED	SAMPLE TYPE		MATRIX TYPE	BOTTLE COUNT	PRES CODE CLIENT PROVIDED	DW Pb	Turb Check	REMARKS
			GRAB	COMP						
MHS-01	12-22-23	1724	X		DW	1	6	X	X	
-02		1728						X	X	
-03		1729						X	X	
-04		1730						X	X	
-05		1732						X	X	
-06		1734						X	X	
-07		1735						X	X	
-08		1737						X	X	
-09		1738						X	X	
-10		1738						X	X	
-11		1740						X	X	

CHEMICAL PRESERVATION CODES: 1 - HCL 2 - H2SO4 3 - HNO3 4 - NAOH 5 - NA2S2O3 6 - UNPRESERVED 7 - OTHER

5 TURNAROUND TIME REQUESTED (PLEASE CIRCLE) (NORMAL) RUSH (RUSH TAT IS SUBJECT TO PACE LABS APPROVAL AND SURCHARGE)	DATE RESULTS NEEDED	6 I understand that by initialing this box I give the lab permission to proceed with analysis, even though it may not meet all sample conformance requirements as defined in the receiving facility's Sample Acceptance Policy and the data will be qualified. Qualified data may NOT be acceptable to report to all regulatory authorities.
RUSH RESULTS VIA (PLEASE CIRCLE) EMAIL PHONE		PROCEED WITH ANALYSIS AND QUALIFY RESULTS: (INITIALS)
EMAIL IF DIFFERENT FROM ABOVE: PHONE # IF DIFFERENT FROM ABOVE:		

7 RELINQUISHED BY: (SIGNATURE) <i>[Signature]</i>	DATE 12/29/23 TIME 4:30pm	RECEIVED BY: (SIGNATURE) <i>[Signature]</i>	DATE 12/29/23 TIME 1640	8 COMMENTS: (FOR LAB USE ONLY)
RELINQUISHED BY: (SIGNATURE) <i>[Signature]</i>	DATE 1/2/24 TIME 0805	RECEIVED BY: (SIGNATURE) <i>[Signature]</i>	DATE 1-2-24 TIME 1020	SAMPLE TEMPERATURE UPON RECEIPT IR 5 22.4 °C
RELINQUISHED BY: (SIGNATURE) <i>[Signature]</i>	DATE 1-2-24 TIME 1535	RECEIVED BY: (SIGNATURE) <i>[Signature]</i>	DATE 1/2/24 TIME 1535	CHILL PROCESS STARTED PRIOR TO RECEIPT Y OR N SAMPLE(S) RECEIVED ON ICE Y OR N SAMPLE ACCEPTANCE NONCONFORMANT REPORT IS NEEDED Y OR N DATE AND TIME TAKEN FROM SAMPLE BOTTLE

REGULATORY PROGRAM (CIRCLE):	NPDES
MORBCA	RCRA
CCDD	TACO: RES OR IND/COMM

ALL HIGHLIGHTED AREAS MUST BE COMPLETED BY CLIENT (PLEASE PRINT)

1 CLIENT SCI Engineering	PROJECT NUMBER <u>2016-0860-2T</u>	PROJECT LOCATION <u>Mehlville MS</u>	PURCHASE ORDER #	3 ANALYSIS REQUESTED	4 (FOR LAB USE ONLY) LOGIN # <u>HA00053</u>
ADDRESS <u>130 Point West Blvd</u>	PHONE NUMBER <u>(314) 581-7570</u>	E-MAIL <u>ggrissom@sciengineering.com</u>	DATE SHIPPED	<input checked="" type="checkbox"/> DW Pb	LOGGED BY: <u>JMS</u>
CITY STATE ZIP <u>St. Charles, MO 63301</u>	SAMPLER (PLEASE PRINT) <u>Dan Voelcker</u>	MATRIX TYPES: WW- WASTEWATER DW- DRINKING WATER GW- GROUND WATER WWSL- SLUDGE NAS- NON AQUEOUS SOLID LCHT- LEACHATE OIL-OIL SO-SOIL SOL-SOLID		<input checked="" type="checkbox"/> Turb Check	CLIENT: <u>SCI Engineering</u>
CONTACT PERSON <u>Glen Grissom</u>	SAMPLER'S SIGNATURE <u>[Signature]</u>				PROJECT: <u>Drinking Water Lead</u>
					PROJ. MGR.: <u>Chenise Lambert-Sykes</u>
					CUSTODY SEAL #:

2 SAMPLE DESCRIPTION (UNIQUE DESCRIPTION AS IT WILL APPEAR ON THE ANALYTICAL REPORT)	DATE COLLECTED	TIME COLLECTED	SAMPLE TYPE		MATRIX TYPE	BOTTLE COUNT	PRES CODE CLIENT PROVIDED	ANALYSIS REQUESTED		REMARKS
			GRAB	COMP				DW Pb	Turb Check	
<u>MHS-12</u>	<u>12-22-23</u>	<u>1741</u>	<u>X</u>		<u>DW</u>	<u>1</u>	<u>6</u>	<u>X</u>	<u>X</u>	
<u>-13</u>	<u>12-22-23</u>	<u>1745</u>						<u>X</u>	<u>X</u>	
<u>-14</u>		<u>1747</u>						<u>X</u>	<u>X</u>	
<u>-15</u>		<u>1748</u>						<u>X</u>	<u>X</u>	
<u>-16</u>		<u>1755</u>						<u>X</u>	<u>X</u>	
<u>-17</u>		<u>1758</u>						<u>X</u>	<u>X</u>	
<u>-18</u>		<u>1758</u>						<u>X</u>	<u>X</u>	
<u>-19</u>		<u>1800</u>						<u>X</u>	<u>X</u>	
<u>-20</u>		<u>1801</u>						<u>X</u>	<u>X</u>	
<u>-21</u>		<u>1804</u>						<u>X</u>	<u>X</u>	
<u>✓ -22</u>		<u>1806</u>						<u>X</u>	<u>X</u>	

CHEMICAL PRESERVATION CODES: 1 - HCL 2 - H2SO4 3 - HNO3 4 - NAOH 5 - NA2S2O3 6 - UNPRESERVED 7 - OTHER

5 TURNAROUND TIME REQUESTED (PLEASE CIRCLE) (RUSH TAT IS SUBJECT TO PACE LABS APPROVAL AND SURCHARGE) <u>NORMAL</u> RUSH	DATE RESULTS NEEDED	6 I understand that by initialing this box I give the lab permission to proceed with analysis, even though it may not meet all sample conformance requirements as defined in the receiving facility's Sample Acceptance Policy and the data will be qualified. Qualified data may NOT be acceptable to report to all regulatory authorities. PROCEED WITH ANALYSIS AND QUALIFY RESULTS: (INITIALS) _____
RUSH RESULTS VIA (PLEASE CIRCLE) EMAIL PHONE		
EMAIL IF DIFFERENT FROM ABOVE: PHONE # IF DIFFERENT FROM ABOVE:		

7 RELINQUISHED BY: (SIGNATURE) <u>[Signature]</u>	DATE TIME	RECEIVED BY: (SIGNATURE) <u>[Signature]</u>	DATE TIME <u>12/29/23</u> <u>1640</u>	8 COMMENTS: (FOR LAB USE ONLY)
RELINQUISHED BY: (SIGNATURE) <u>[Signature]</u>	DATE TIME <u>1/2/24</u>	RECEIVED BY: (SIGNATURE) <u>[Signature]</u>	DATE TIME <u>1-2-24</u> <u>1535</u>	SAMPLE TEMPERATURE UPON RECEIPT <u>224</u> °C IR 5
RELINQUISHED BY: (SIGNATURE) <u>[Signature]</u>	DATE TIME <u>1-2-24</u> <u>1535</u>	RECEIVED BY: (SIGNATURE) <u>[Signature]</u>	DATE TIME <u>1/2/27</u> <u>1535</u>	CHILL PROCESS STARTED PRIOR TO RECEIPT Y OR N SAMPLE(S) RECEIVED ON ICE Y OR N SAMPLE ACCEPTANCE NONCONFORMANT REPORT IS NEEDED Y OR N DATE AND TIME TAKEN FROM SAMPLE BOTTLE

REGULATORY PROGRAM (CIRCLE):	NPDES
MORBCA	RCRA
CCDD	TACO: RES OR IND/COMM

CHAIN OF CUSTODY RECORD

STATE WHERE SAMPLE COLLECTED MO

ALL HIGHLIGHTED AREAS MUST BE COMPLETED BY CLIENT (PLEASE PRINT)

1 CLIENT SCI Engineering ADDRESS 130 Point West Blvd CITY STATE ZIP St. Charles, MO 63301 CONTACT PERSON Glen Grissom	PROJECT NUMBER 2016-0860-21	PROJECT LOCATION Mehlville HS	PURCHASE ORDER #	3 ANALYSIS REQUESTED + + DW Pb Turb Check	4 (FOR LAB USE ONLY) LOGIN # HA00053 LOGGED BY: <u>[Signature]</u> CLIENT: SCI Engineering PROJECT: Drinking Water Lead PROJ. MGR.: Chenise Lambert-Sykes CUSTODY SEAL #:
	PHONE NUMBER (314) 581-7570	E-MAIL ggrissom@sciengineering.com	DATE SHIPPED		
	SAMPLER (PLEASE PRINT) Dan Uvelwker	MATRIX TYPES: WW- WASTEWATER DW- DRINKING WATER GW- GROUND WATER WWSL- SLUDGE NAS- NON AQUEOUS SOLID LCHT- LEACHATE OIL-OIL SO-SOIL SOL-SOLID			

2 SAMPLE DESCRIPTION (UNIQUE DESCRIPTION AS IT WILL APPEAR ON THE ANALYTICAL REPORT)	DATE COLLECTED	TIME COLLECTED	SAMPLE TYPE		MATRIX TYPE	BOTTLE COUNT	PRES CODE CLIENT PROVIDED	DW Pb	Turb Check	REMARKS
			GRAB	COMP						
MHS-23	12-22-23	1808	X		DW	1	6	X	X	
24		1810						X	X	
25		1812						X	X	
26		1813						X	X	
27		1814						X	X	
28		1815						X	X	
29		1816						X	X	
30		1817						X	X	
31		1820						X	X	
32		1821						X	X	
✓ 33		1821							X	X

CHEMICAL PRESERVATION CODES: 1 - HCL 2 - H2SO4 3 - HNO3 4 - NAOH 5 - NA2S2O3 6 - UNPRESERVED 7 - OTHER

5 TURNAROUND TIME REQUESTED (PLEASE CIRCLE) (RUSH TAT IS SUBJECT TO PACE LABS APPROVAL AND SURCHARGE) NORMAL <input checked="" type="radio"/> RUSH <input type="radio"/> RUSH RESULTS VIA (PLEASE CIRCLE) EMAIL <input type="radio"/> PHONE <input type="radio"/> EMAIL IF DIFFERENT FROM ABOVE: _____ PHONE # IF DIFFERENT FROM ABOVE: _____	DATE RESULTS NEEDED	6 I understand that by initialing this box I give the lab permission to proceed with analysis, even though it may not meet all sample conformance requirements as defined in the receiving facility's Sample Acceptance Policy and the data will be qualified. Qualified data may NOT be acceptable to report to all regulatory authorities. PROCEED WITH ANALYSIS AND QUALIFY RESULTS: (INITIALS) _____
--	---------------------	--

7 RELINQUISHED BY: (SIGNATURE) DATE TIME RELINQUISHED BY: (SIGNATURE) DATE 1/2/24 TIME 0805 RELINQUISHED BY: (SIGNATURE) DATE 1-2-24 TIME 1535	RECEIVED BY: (SIGNATURE) DATE 1/29/23 TIME 1640 RECEIVED BY: (SIGNATURE) DATE 1-2-24 TIME 1020 RECEIVED BY: (SIGNATURE) DATE 1/2/27 TIME 1535	8 COMMENTS: (FOR LAB USE ONLY) SAMPLE TEMPERATURE UPON RECEIPT 22.4 °C IR 5 CHILL PROCESS STARTED PRIOR TO RECEIPT Y OR N SAMPLE(S) RECEIVED ON ICE Y OR N SAMPLE ACCEPTANCE NONCONFORMANT REPORT IS NEEDED Y OR N DATE AND TIME TAKEN FROM SAMPLE _____
---	---	---

3 of 1

REGULATORY PROGRAM (CIRCLE):	NPDES
MORBCA	RCRA
CCDD	TACO: RES OR IND/COMM

CHAIN OF CUSTODY RECORD

STATE WHERE SAMPLE COLLECTED MO

ALL HIGHLIGHTED AREAS MUST BE COMPLETED BY CLIENT (PLEASE PRINT)

1 CLIENT SCI Engineering ADDRESS 130 Point West Blvd CITY STATE ZIP St. Charles, MO 63301 CONTACT PERSON Glen Grissom	PROJECT NUMBER 2016-0860-2T	PROJECT LOCATION Mehlville HS	PURCHASE ORDER #	3 ANALYSIS REQUESTED + + DW Pb Turb Check	4 (FOR LAB USE ONLY) LOGIN # HA00053 LOGGED BY: CLIENT: SCI Engineering PROJECT: Drinking Water Lead PROJ. MGR.: Chenise Lambert-Sykes CUSTODY SEAL #:
	PHONE NUMBER (314) 581-7570	E-MAIL ggrissom@sciengineering.com	DATE SHIPPED		
	SAMPLER (PLEASE PRINT) Dan Uvelueber	MATRIX TYPES: WW- WASTEWATER DW- DRINKING WATER GW- GROUND WATER WWSL- SLUDGE NAS- NON AQUEOUS SOLID LCHT- LEACHATE OIL- OIL SO- SOIL SOL- SOLID			
	SAMPLER'S SIGNATURE				

2 SAMPLE DESCRIPTION (UNIQUE DESCRIPTION AS IT WILL APPEAR ON THE ANALYTICAL REPORT)	DATE COLLECTED	TIME COLLECTED	SAMPLE TYPE		MATRIX TYPE	BOTTLE COUNT	PRES CODE CLIENT PROVIDED	DW Pb	Turb Check	REMARKS
			GRAB	COMP						
MHS-34	12-22-23	1822	X		DW	1	6	X	X	
35		1823						X	X	
36		1825						X	X	
37		1827						X	X	
38		1832						X	X	
39		1834						X	X	
40		1835						X	X	
41		1837						X	X	
42		1838						X	X	
43		1840						X	X	
44		1846						X	X	

CHEMICAL PRESERVATION CODES: 1 - HCL 2 - H2SO4 3 - HNO3 4 - NAOH 5 - NA2S2O3 6 - UNPRESERVED 7 - OTHER

5 TURNAROUND TIME REQUESTED (PLEASE CIRCLE) (RUSH TAT IS SUBJECT TO PACE LABS APPROVAL AND SURCHARGE) NORMAL RUSH RUSH RESULTS VIA (PLEASE CIRCLE) EMAIL PHONE EMAIL IF DIFFERENT FROM ABOVE: PHONE # IF DIFFERENT FROM ABOVE:	6 I understand that by initialing this box I give the lab permission to proceed with analysis, even though it may not meet all sample conformance requirements as defined in the receiving facility's Sample Acceptance Policy and the data will be qualified. Qualified data may NOT be acceptable to report to all regulatory authorities. PROCEED WITH ANALYSIS AND QUALIFY RESULTS: (INITIALS)
---	--

7 RELINQUISHED BY: (SIGNATURE) DATE TIME RELINQUISHED BY: (SIGNATURE) DATE 1/2/24 TIME 0805 RELINQUISHED BY: (SIGNATURE) DATE 1-2-24 TIME 1535	RECEIVED BY: (SIGNATURE) DATE 12/29/23 TIME 1640 RECEIVED BY: (SIGNATURE) DATE 1-2-24 TIME 1020 RECEIVED BY: (SIGNATURE) DATE 1/2/24 TIME 1535	8 COMMENTS: (FOR LAB USE ONLY) SAMPLE TEMPERATURE UPON RECEIPT IR 5 22.4 °C CHILL PROCESS STARTED PRIOR TO RECEIPT Y OR N SAMPLE(S) RECEIVED ON ICE Y OR N SAMPLE ACCEPTANCE NONCONFORMANT REPORT IS NEEDED Y OR N DATE AND TIME TAKEN FROM SAMPLE
---	--	---

4 of 7

REGULATORY PROGRAM (CIRCLE):	NPDES
MORBCA	RCRA
CCDD	TACO: RES OR IND/COMM

ALL HIGHLIGHTED AREAS MUST BE COMPLETED BY CLIENT (PLEASE PRINT)

1 CLIENT SCI Engineering	PROJECT NUMBER <u>2016-0860-21</u>	PROJECT LOCATION <u>Mehlville HS</u>	PURCHASE ORDER #	3 ANALYSIS REQUESTED	4 (FOR LAB USE ONLY) LOGIN # <u>HA00053</u>
ADDRESS <u>130 Point West Blvd</u>	PHONE NUMBER <u>(314) 581-7570</u>	E-MAIL <u>ggrissom@sciengineering.com</u>	DATE SHIPPED	<input checked="" type="checkbox"/> DW Pb	LOGGED BY: _____
CITY STATE ZIP <u>St. Charles, MO 63301</u>	SAMPLER (PLEASE PRINT) <u>Dan Urelwicker</u>	MATRIX TYPES: WW- WASTEWATER DW- DRINKING WATER GW- GROUND WATER WWSL- SLUDGE NAS- NON AQUEOUS SOLID LCHL- LEACHATE OIL- OIL SO- SOIL SOL- SOLID		<input checked="" type="checkbox"/> Turb Check	CLIENT: <u>SCI Engineering</u>
CONTACT PERSON <u>Glen Grissom</u>	SAMPLER'S SIGNATURE				PROJECT: <u>Drinking Water Lead</u>
					PROJ. MGR.: <u>Chenise Lambert-Sykes</u>
					CUSTODY SEAL #: _____

2 SAMPLE DESCRIPTION (UNIQUE DESCRIPTION AS IT WILL APPEAR ON THE ANALYTICAL REPORT)	DATE COLLECTED	TIME COLLECTED	SAMPLE TYPE		MATRIX TYPE	BOTTLE COUNT	PRES CODE CLIENT PROVIDED	DW Pb	Turb Check	REMARKS
			GRAB	COMP						
<u>MHS-56</u>	<u>12/22/23</u>	<u>1906</u>	<u>X</u>		<u>DW</u>	<u>1</u>	<u>6</u>	<u>X</u>	<u>X</u>	
<u>57</u>	<u>12-22-23</u>	<u>1908</u>						<u>X</u>	<u>X</u>	
<u>58</u>		<u>1919</u>						<u>X</u>	<u>X</u>	
<u>59</u>		<u>1920</u>						<u>X</u>	<u>X</u>	
<u>60</u>		<u>1921</u>						<u>X</u>	<u>X</u>	
<u>61</u>		<u>1923</u>						<u>X</u>	<u>X</u>	
<u>62</u>		<u>1924</u>						<u>X</u>	<u>X</u>	
<u>63</u>		<u>1926</u>						<u>X</u>	<u>X</u>	
<u>64</u>		<u>1928</u>						<u>X</u>	<u>X</u>	
<u>65</u>		<u>1928</u>						<u>X</u>	<u>X</u>	
<u>66</u>		<u>1931</u>						<u>X</u>	<u>X</u>	

CHEMICAL PRESERVATION CODES: 1 - HCL 2 - H2SO4 3 - HNO3 4 - NAOH 5 - NA2S2O3 6 - UNPRESERVED 7 - OTHER

5 TURNAROUND TIME REQUESTED (PLEASE CIRCLE) (RUSH TAT IS SUBJECT TO PACE LABS APPROVAL AND SURCHARGE)	<input checked="" type="checkbox"/> NORMAL <input type="checkbox"/> RUSH	DATE RESULTS NEEDED	6 I understand that by initialing this box I give the lab permission to proceed with analysis, even though it may not meet all sample conformance requirements as defined in the receiving facility's Sample Acceptance Policy and the data will be qualified. Qualified data may NOT be acceptable to report to all regulatory authorities.
RUSH RESULTS VIA (PLEASE CIRCLE) EMAIL PHONE			PROCEED WITH ANALYSIS AND QUALIFY RESULTS: (INITIALS) _____
EMAIL IF DIFFERENT FROM ABOVE: _____	PHONE # IF DIFFERENT FROM ABOVE: _____		

7 RELINQUISHED BY: (SIGNATURE) <u>[Signature]</u>	DATE TIME <u>1/2/24</u> <u>0805</u>	RECEIVED BY: (SIGNATURE) <u>[Signature]</u>	DATE TIME <u>1-2-24</u> <u>1020</u>	8 COMMENTS: (FOR LAB USE ONLY) SAMPLE TEMPERATURE UPON RECEIPT <u>22.4</u> °C IR 5 CHILL PROCESS STARTED PRIOR TO RECEIPT Y OR N SAMPLE(S) RECEIVED ON ICE Y OR N SAMPLE ACCEPTANCE NONCONFORMANT REPORT IS NEEDED Y OR N DATE AND TIME TAKEN FROM SAMPLE BOTTLE _____
RELINQUISHED BY: (SIGNATURE) <u>[Signature]</u>	DATE TIME <u>1-2-24</u> <u>1535</u>	RECEIVED BY: (SIGNATURE) <u>[Signature]</u>	DATE TIME <u>1/2/24</u> <u>1535</u>	

6 of 7

REGULATORY PROGRAM (CIRCLE):	NPDES
MORBCA	RCRA
CCDD	TACO: RES OR IND/COMM

ALL HIGHLIGHTED AREAS MUST BE COMPLETED BY CLIENT (PLEASE PRINT)

1 CLIENT SCI Engineering			PROJECT NUMBER 2016-0860-21		PROJECT LOCATION Mehlville HS		PURCHASE ORDER #		3 ANALYSIS REQUESTED				4 (FOR LAB USE ONLY) LOGIN # 1180053	
ADDRESS 130 Point West Blvd			PHONE NUMBER (314) 581-7570		E-MAIL ggriissom@sciengineering.com		DATE SHIPPED		+				LOGGED BY:	
CITY St. Charles, MO 63301			SAMPLER (PLEASE PRINT) Dan Vrelueker		SAMPLER'S SIGNATURE		MATRIX TYPES: WW- WASTEWATER DW- DRINKING WATER GW- GROUND WATER WWSL- SLUDGE NAS- NON AQUEOUS SOLID LCHL- LEACHATE OIL-OIL SO-SOL SOL-SOLID		DW Pb				CLIENT: SCI Engineering	
CONTACT PERSON Glen Grissom									Turb Check				PROJECT: Drinking Water Lead	
													PROJ. MGR.: Chenise Lambert-Sykes	
													CUSTODY SEAL #:	

2 SAMPLE DESCRIPTION (UNIQUE DESCRIPTION AS IT WILL APPEAR ON THE ANALYTICAL REPORT)	DATE COLLECTED	TIME COLLECTED	SAMPLE TYPE		MATRIX TYPE	BOTTLE COUNT	PRES CODE CLIENT PROVIDED	DW Pb	Turb Check							REMARKS
			GRAB	COMP												
MHS-67	12-22-23	1932	X		DW	1	6	X	X							
↓ 68	↓	1935	↓		↓	↓	↓	X	X							
↓ 69	↓	1936	↓		↓	↓	↓	X	X							
								X	X							
								X	X							
								X	X							
								X	X							
								X	X							
								X	X							
								X	X							
								X	X							
								X	X							
								X	X							
								X	X							

CHEMICAL PRESERVATION CODES: 1-HCL 2-H2SO4 3-HNO3 4-NAOH 5-NA2S2O3 6-UNPRESERVED 7-OTHER

5 TURNAROUND TIME REQUESTED (PLEASE CIRCLE) (NORMAL) RUSH	DATE RESULTS NEEDED	6 I understand that by initialing this box I give the lab permission to proceed with analysis, even though it may not meet all sample conformance requirements as defined in the receiving facility's Sample Acceptance Policy and the data will be qualified. Qualified data may NOT be acceptable to report to all regulatory authorities.
RUSH RESULTS VIA (PLEASE CIRCLE) EMAIL PHONE		PROCEED WITH ANALYSIS AND QUALIFY RESULTS: (INITIALS) _____
EMAIL IF DIFFERENT FROM ABOVE: PHONE # IF DIFFERENT FROM ABOVE:		

7 RELINQUISHED BY: (SIGNATURE)		DATE	RECEIVED BY: (SIGNATURE)	DATE	8 COMMENTS: (FOR LAB USE ONLY)
RELINQUISHED BY: (SIGNATURE)		TIME	RECEIVED BY: (SIGNATURE)	TIME	
RELINQUISHED BY: (SIGNATURE)		DATE	RECEIVED BY: (SIGNATURE)	DATE	
RELINQUISHED BY: (SIGNATURE)		TIME	RECEIVED BY: (SIGNATURE)	TIME	
RELINQUISHED BY: (SIGNATURE)		DATE	RECEIVED BY: (SIGNATURE)	DATE	
RELINQUISHED BY: (SIGNATURE)		TIME	RECEIVED BY: (SIGNATURE)	TIME	SAMPLE TEMPERATURE UPON RECEIPT <u>22.4</u> °C
RELINQUISHED BY: (SIGNATURE)		TIME	RECEIVED BY: (SIGNATURE)	TIME	CHILL PROCESS STARTED PRIOR TO RECEIPT Y OR N
RELINQUISHED BY: (SIGNATURE)		DATE	RECEIVED BY: (SIGNATURE)	DATE	SAMPLE(S) RECEIVED ON ICE Y OR N
RELINQUISHED BY: (SIGNATURE)		TIME	RECEIVED BY: (SIGNATURE)	TIME	SAMPLE ACCEPTANCE NONCONFORMANT REPORT IS NEEDED Y OR N
RELINQUISHED BY: (SIGNATURE)		DATE	RECEIVED BY: (SIGNATURE)	DATE	DATE AND TIME TAKEN FROM SAMPLE _____
RELINQUISHED BY: (SIGNATURE)		TIME	RECEIVED BY: (SIGNATURE)	TIME	

