



**SCI ENGINEERING, INC.**

**EARTH • SCIENCE • SOLUTIONS**

GEOTECHNICAL  
ENVIRONMENTAL  
NATURAL RESOURCES  
CULTURAL RESOURCES  
CONSTRUCTION SERVICES

April 2, 2024

Michael Gegg  
Mehlville School District  
3120 Lemay Ferry Road  
St. Louis, Missouri 63125

RE: Lead in Drinking Water Report  
Forder Elementary School  
623 West Ripa Avenue  
St. Louis, Missouri  
SCI No. 2016-0860.2T

Dear Michael Gegg:

## **INTRODUCTION**

SCI Engineering, Inc. (SCI) is pleased to submit this report summarizing lead in drinking water sampling activities performed on December 21, 2023. The purpose of the sampling activities was to screen for elevated levels of lead in the drinking water at potable water sources throughout the above-referenced structure.

The drinking water survey is intended to satisfy the requirements for the “Get the Lead Out of School Drinking Water Act” (GTLOSDWA), Section 160.077 administered by the Missouri Department of Health and Senior Services. Potable water sources to be tested were identified by the school district prior to SCI’s field activities.

## **LIMITATIONS**

SCI's sampling activities were limited to locations identified by the school district. If any additional potable water sources need testing, please contact SCI, and we will make arrangements for sampling these fixtures. Potable water sources that were not sampled will need a sign placed near each fixture informing students and faculty it is not to be used as a drinking water source.

During the course of performing the drinking water sampling of the structure, SCI was unable to sample two fixtures because they were out of order. These fixtures included the ice machine in the library storage room and the water fountain in the Special School District room. If these fixtures are made operational, they should be sampled or labeled non-potable. SCI was able to sample all other locations identified by the school district.

## **DRINKING WATER SURVEY**

SCI collected “first draw” samples which consisted of collecting a water sample from each fixture or sample location after it remained stagnant for at least eight hours. Prior to sampling, SCI first mobilized

to the site to flush the identified potable water fixtures throughout the structure. Once each fixture was flushed, a sign was placed on the fixture indicating it should not be used. SCI then revisited the site, after a minimum of eight hours, to collect water samples from the fixtures.

SCI collected 48 drinking water samples (FES-1 through FES-48) from various water fixtures located throughout the structure and submitted them for analytical testing. The drinking water samples were analyzed for total lead by U.S. EPA Method 200.8. SCI collected a minimum of 250 milliliters of water from each location. Sampled water was containerized in laboratory-provided sample containers and shipped to the lab using standard chain-of-custody procedures. Figures depicting the locations of the sampled water fixtures are enclosed.

The drinking water samples were analyzed for lead in accordance with the GTLOSDWA, Section 160.077, which establishes an action level (AL) of 5 parts per billion (ppb). The drinking water samples which exceeded the AL are identified in Table 1, below. A copy of the analytical test results and chain-of-custody for all samples is enclosed.

**Table 1 – Lead in Drinking Water Results**

Sample Number	Sample Location	Sample Description	Result (ppb)
FES-11	Room 111	Front Wall Left Sink	5.6
FES-12	Room 111	Side Wall Sink	23.3
FES-17	Kitchen	Mixer Faucet	512
FES-21	Kitchen	Garbage Disposal Sink	8.5
FES-25	Dishwashing Room	Triple Basin Sink, Middle Sink	15.3
FES-34	Room 112	Water Fountain	5.6
FES-36	Nurse's Office	Sink	9.0

## CONCLUSION AND RECOMMENDATIONS

As can be seen in Table 1, above, seven drinking water samples exceeded the AL. SCI recommends any fixture which exceeds the AL be taken out of service until remediated and follow up testing indicates results less than the AL. Alternatively, if a water fixture is determined not to be a potable drinking water source, signage may be installed indicating the purpose and/or restrictions of the fixture.

According to GTLOSDWA, any water fixtures which exceed the AL shall be remediated prior to August 1, 2024, or the first day on which students will be present in the building, whichever is later. Any replacement fixture shall be lead free, as defined in 40 CFR 143.12.

## REPORTING

Within seven business days after receiving this report, the school district shall contact parents and staff via written notification which shall include the following:

- The test results and a summary that explains such results;
- A description of any remedial steps taken;

- A description of general health effects of lead contamination and community specific resources; and
- If there is not enough water to meet the drinking water needs of the students, teachers and staff, bottled water shall be provided.

Additionally, within two weeks of receiving this report, the results and any lead remediation plans must be made available on the school's website.

This report, and subsequent annual testing reports, must be submitted to the Missouri Department of Health and Senior Services, Healthy Drinking Water Unit, PO Box 570, Jefferson City, MO 65102-0570.

### **FUTURE TESTING**

After the fixtures identified in Table 1, above, have been remediated, at least 25 percent of the remediated fixtures must be sampled annually until all remediated sources have been tested. However, SCI recommends all fixtures be tested once they have been remediated. Once all fixtures have been tested and are below the action level, the school shall test the potable drinking water fixtures once every five years.

SCI appreciates the opportunity to be of service to you on this project, and we look forward to working with you in the future. Please contact us if you have any questions or comments regarding the information provided.

Respectfully,

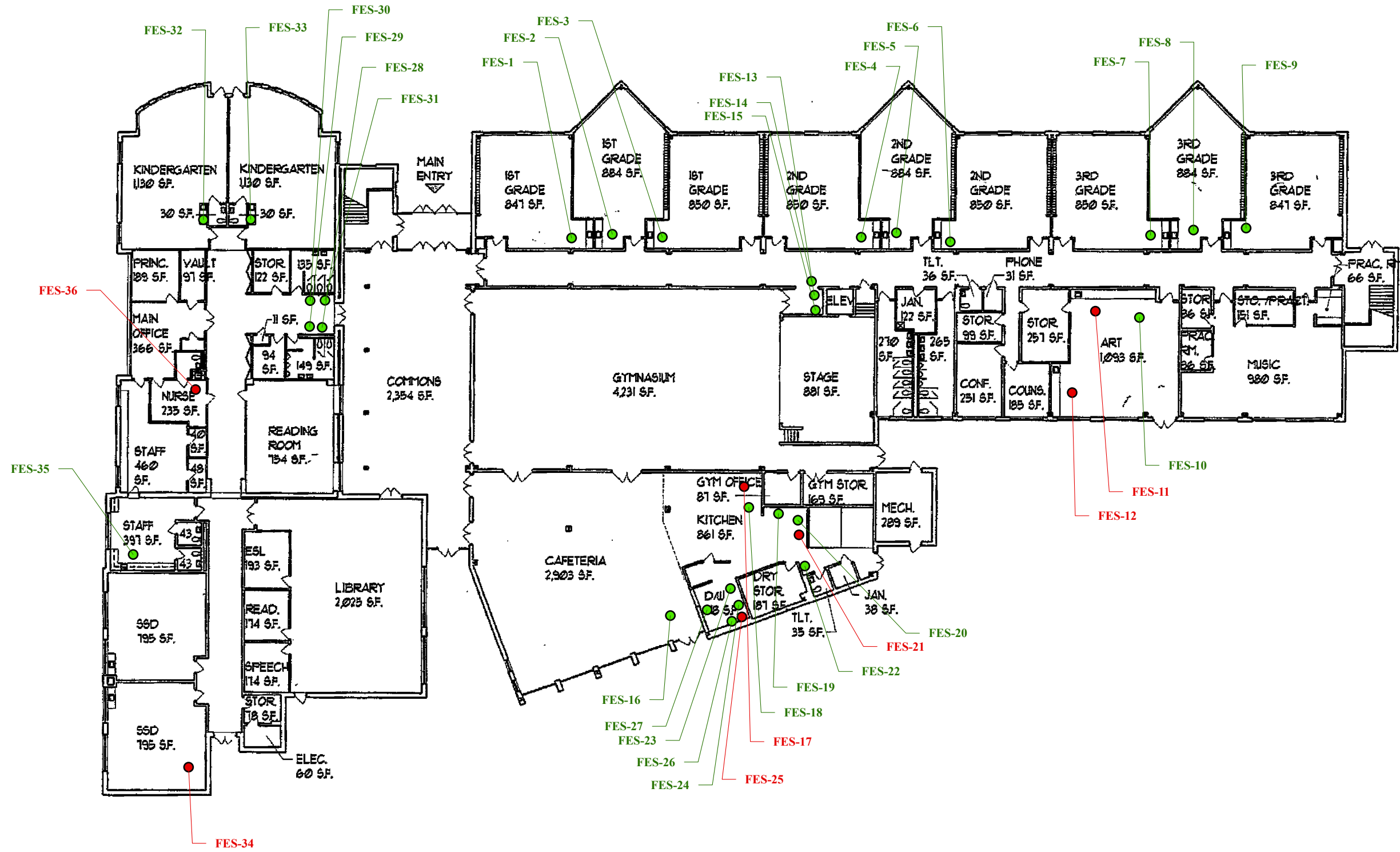
**SCI ENGINEERING, INC.**

Brian L. Lieb  
Project Scientist

Jessica B. Keeven, CHMM  
Senior Scientist

BLL/JBK/rah

Enclosure  
Lead Drinking Water Sampling Plan  
Lead Testing Results



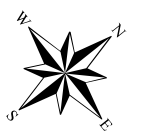
**GENERAL NOTES/LEGEND**

- RESULTS GREATER THAN THE ACTION LEVEL OF 5 PARTS PER BILLION
- RESULTS LESS THAN THE ACTION LEVEL OF 5 PARTS PER BILLION

FLOOR PLANS PROVIDED BY MEHLVILLE SCHOOL DISTRICT. DIMENSIONS AND LOCATIONS ARE APPROXIMATE; ACTUAL MAY VARY. DRAWING SHALL NOT BE USED OUTSIDE THE CONTEXT OF THE REPORT FOR WHICH IT WAS GENERATED.

**PROJECT NAME**  
 MEHLVILLE SCHOOL DISTRICT  
 FORDER ELEMENTARY SCHOOL - 1ST FLOOR  
 ST. LOUIS, MISSOURI

**LEAD DRINKING WATER SAMPLING PLAN**



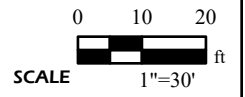
**JOB NUMBER**  
2016-0860.2T

**FIGURE DATE**  
02/22/2024

**DRAWN BY**  
JTM

**CHECKED BY**  
BLL

**FIGURE**  
1





**GENERAL NOTES/LEGEND**

● RESULTS LESS THAN THE ACTION LEVEL OF 5 PARTS PER BILLION

FLOOR PLANS PROVIDED BY MEHLVILLE SCHOOL DISTRICT. DIMENSIONS AND LOCATIONS ARE APPROXIMATE; ACTUAL MAY VARY. DRAWING SHALL NOT BE USED OUTSIDE THE CONTEXT OF THE REPORT FOR WHICH IT WAS GENERATED.

**PROJECT NAME**  
 MEHLVILLE SCHOOL DISTRICT  
 FORDER ELEMENTARY SCHOOL- 2ND FLOOR  
 ST. LOUIS, MISSOURI

**LEAD DRINKING WATER SAMPLING PLAN**



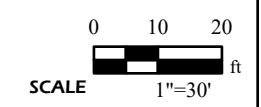
**JOB NUMBER**  
2016-0860.2T

**FIGURE DATE**  
02/22/2024

**DRAWN BY**  
JTM

**CHECKED BY**  
BLL

**FIGURE**  
2





Pace Analytical Services, LLC

2231 W. Altorfer Drive

Peoria, IL 61615

(800)752-6651

January 30, 2024

Glenn Grissom  
SCI Engineering  
130 Point W. Blvd.  
St. Chariles, MO 63301

RE: 2016-0860.2T - FORDER ELEM

Dear Glenn Grissom:

Please find enclosed the analytical results for the **48** sample(s) the laboratory received on **1/2/24 3:35 pm** and logged in under work order **HA00057**. All testing is performed according to our current TNI accreditations unless otherwise noted. This report cannot be reproduced, except in full, without the written permission of Pace Analytical Services, LLC.

If you have any questions regarding your report, please contact your project manager. Quality and timely data is of the utmost importance to us.

Pace Analytical Services appreciates the opportunity to provide you with analytical expertise. We are always trying to improve our customer service and we welcome you to contact the General Manager, Lisa Grant, with any feedback you have about your experience with our laboratory at 309-683-1764 or [lisa.grant@pacelabs.com](mailto:lisa.grant@pacelabs.com).

A handwritten signature in black ink, appearing to read "Chenise Lambert-Sykes".

Chenise Lambert-Sykes  
Project Manager  
(314)432-0550  
[Chenise.Lambert-Sykes@pacelabs.com](mailto:Chenise.Lambert-Sykes@pacelabs.com)



**SAMPLE RECEIPT CHECK LIST**

Items not applicable will be marked as in compliance

---

Work Order    HA00057

---

YES	Samples received within temperature compliance when applicable
YES	COC present upon sample receipt
YES	COC completed & legible
YES	Sampler name & signature present
YES	Unique sample IDs assigned
YES	Sample collection location recorded
YES	Date & time collected recorded on COC
YES	Relinquished by client signature on COC
YES	COC & labels match
YES	Sample labels are legible
YES	Appropriate bottle(s) received
YES	Sufficient sample volume received
YES	Sample containers received undamaged
NO	Zero headspace, <6 mm present in VOA vials
NO	Trip blank(s) received
YES	All non-field analyses received within holding times
NO	Short hold time analysis
YES	Current PDC COC submitted
NO	Case narrative provided



Pace Analytical Services, LLC  
2231 W. Altorfer Drive  
Peoria, IL 61615  
(800)752-6651

**Case Narrative**

The drinking water lead analysis was performed at Pace-Ormond Beach, FL. Please refer to the subcontract section of the report for details.

---





ANALYTICAL RESULTS

Sample: HA00057-01
Name: FES - 1
Matrix: Drinking Water - Grab

Sampled: 12/21/23 17:13
Received: 01/02/24 15:35

Table with 10 columns: Parameter, Result, Unit, Qualifier, Prepared, Dilution, MRL, Analyzed, Analyst, Method

Subcontracted Analysis - Pace Analytical - Ormond Beach

Table row for Lead: < 1 ug/L, 12/21/23 17:13, 1, 1, PACE, EPA 200.8 REV 5.4

Sample: HA00057-02
Name: FES - 2
Matrix: Drinking Water - Grab

Sampled: 12/21/23 17:16
Received: 01/02/24 15:35

Table with 10 columns: Parameter, Result, Unit, Qualifier, Prepared, Dilution, MRL, Analyzed, Analyst, Method

Subcontracted Analysis - Pace Analytical - Ormond Beach

Table row for Lead: < 1 ug/L, 12/21/23 17:16, 1, 1, PACE, EPA 200.8 REV 5.4

Sample: HA00057-03
Name: FES - 3
Matrix: Drinking Water - Grab

Sampled: 12/21/23 17:19
Received: 01/02/24 15:35

Table with 10 columns: Parameter, Result, Unit, Qualifier, Prepared, Dilution, MRL, Analyzed, Analyst, Method

Subcontracted Analysis - Pace Analytical - Ormond Beach

Table row for Lead: < 1 ug/L, 12/21/23 17:19, 1, 1, PACE, EPA 200.8 REV 5.4

Sample: HA00057-04
Name: FES - 4
Matrix: Drinking Water - Grab

Sampled: 12/21/23 17:21
Received: 01/02/24 15:35

Table with 10 columns: Parameter, Result, Unit, Qualifier, Prepared, Dilution, MRL, Analyzed, Analyst, Method

Subcontracted Analysis - Pace Analytical - Ormond Beach

Table row for Lead: < 1 ug/L, 12/21/23 17:21, 1, 1, PACE, EPA 200.8 REV 5.4



ANALYTICAL RESULTS

Sample: HA00057-05
Name: FES - 5
Matrix: Drinking Water - Grab

Sampled: 12/21/23 17:24
Received: 01/02/24 15:35

Table with 10 columns: Parameter, Result, Unit, Qualifier, Prepared, Dilution, MRL, Analyzed, Analyst, Method

Subcontracted Analysis - Pace Analytical - Ormond Beach

Table row for Lead: < 1 ug/L, 12/21/23 17:24, 1, 1, PACE, EPA 200.8 REV 5.4

Sample: HA00057-06
Name: FES - 6
Matrix: Drinking Water - Grab

Sampled: 12/21/23 17:26
Received: 01/02/24 15:35

Table with 10 columns: Parameter, Result, Unit, Qualifier, Prepared, Dilution, MRL, Analyzed, Analyst, Method

Subcontracted Analysis - Pace Analytical - Ormond Beach

Table row for Lead: < 1 ug/L, 12/21/23 17:26, 1, 1, PACE, EPA 200.8 REV 5.4

Sample: HA00057-07
Name: FES - 7
Matrix: Drinking Water - Grab

Sampled: 12/21/23 17:28
Received: 01/02/24 15:35

Table with 10 columns: Parameter, Result, Unit, Qualifier, Prepared, Dilution, MRL, Analyzed, Analyst, Method

Subcontracted Analysis - Pace Analytical - Ormond Beach

Table row for Lead: < 1 ug/L, 12/21/23 17:28, 1, 1, PACE, EPA 200.8 REV 5.4

Sample: HA00057-08
Name: FES - 8
Matrix: Drinking Water - Grab

Sampled: 12/21/23 17:30
Received: 01/02/24 15:35

Table with 10 columns: Parameter, Result, Unit, Qualifier, Prepared, Dilution, MRL, Analyzed, Analyst, Method

Subcontracted Analysis - Pace Analytical - Ormond Beach

Table row for Lead: < 1 ug/L, 12/21/23 17:30, 1, 1, PACE, EPA 200.8 REV 5.4



ANALYTICAL RESULTS

Sample: HA00057-09
Name: FES - 9
Matrix: Drinking Water - Grab

Sampled: 12/21/23 17:32
Received: 01/02/24 15:35

Table with 10 columns: Parameter, Result, Unit, Qualifier, Prepared, Dilution, MRL, Analyzed, Analyst, Method

Subcontracted Analysis - Pace Analytical - Ormond Beach

Table row for Lead: Result < 1, Unit ug/L, Prepared 12/21/23 17:32, Dilution 1, MRL 1, Analyst PACE, Method EPA 200.8 REV 5.4

Sample: HA00057-10
Name: FES - 10
Matrix: Drinking Water - Grab

Sampled: 12/21/23 17:35
Received: 01/02/24 15:35

Table with 10 columns: Parameter, Result, Unit, Qualifier, Prepared, Dilution, MRL, Analyzed, Analyst, Method

Subcontracted Analysis - Pace Analytical - Ormond Beach

Table row for Lead: Result 1.6, Unit ug/L, Prepared 12/21/23 17:35, Dilution 1, MRL 1, Analyst PACE, Method EPA 200.8 REV 5.4

Sample: HA00057-11
Name: FES - 11
Matrix: Drinking Water - Grab

Sampled: 12/21/23 17:36
Received: 01/02/24 15:35

Table with 10 columns: Parameter, Result, Unit, Qualifier, Prepared, Dilution, MRL, Analyzed, Analyst, Method

Subcontracted Analysis - Pace Analytical - Ormond Beach

Table row for Lead: Result 5.6, Unit ug/L, Prepared 12/21/23 17:36, Dilution 1, MRL 1, Analyst PACE, Method EPA 200.8 REV 5.4

Sample: HA00057-12
Name: FES - 12
Matrix: Drinking Water - Grab

Sampled: 12/21/23 17:38
Received: 01/02/24 15:35

Table with 10 columns: Parameter, Result, Unit, Qualifier, Prepared, Dilution, MRL, Analyzed, Analyst, Method

Subcontracted Analysis - Pace Analytical - Ormond Beach

Table row for Lead: Result 23.3, Unit ug/L, Prepared 12/21/23 17:38, Dilution 1, MRL 1, Analyst PACE, Method EPA 200.8 REV 5.4



ANALYTICAL RESULTS

Sample: HA00057-13
Name: FES - 13
Matrix: Drinking Water - Grab

Sampled: 12/21/23 17:40
Received: 01/02/24 15:35

Table with 10 columns: Parameter, Result, Unit, Qualifier, Prepared, Dilution, MRL, Analyzed, Analyst, Method

Subcontracted Analysis - Pace Analytical - Ormond Beach

Table row for Lead: Result < 1, Unit ug/L, Prepared 12/21/23 17:40, Dilution 1, MRL 1, Analyst PACE, Method EPA 200.8 REV 5.4

Sample: HA00057-14
Name: FES - 14
Matrix: Drinking Water - Grab

Sampled: 12/21/23 17:41
Received: 01/02/24 15:35

Table with 10 columns: Parameter, Result, Unit, Qualifier, Prepared, Dilution, MRL, Analyzed, Analyst, Method

Subcontracted Analysis - Pace Analytical - Ormond Beach

Table row for Lead: Result < 1, Unit ug/L, Prepared 12/21/23 17:41, Dilution 1, MRL 1, Analyst PACE, Method EPA 200.8 REV 5.4

Sample: HA00057-15
Name: FES - 15
Matrix: Drinking Water - Grab

Sampled: 12/21/23 17:42
Received: 01/02/24 15:35

Table with 10 columns: Parameter, Result, Unit, Qualifier, Prepared, Dilution, MRL, Analyzed, Analyst, Method

Subcontracted Analysis - Pace Analytical - Ormond Beach

Table row for Lead: Result < 1, Unit ug/L, Prepared 12/21/23 17:42, Dilution 1, MRL 1, Analyst PACE, Method EPA 200.8 REV 5.4

Sample: HA00057-16
Name: FES - 16
Matrix: Drinking Water - Grab

Sampled: 12/21/23 17:45
Received: 01/02/24 15:35

Table with 10 columns: Parameter, Result, Unit, Qualifier, Prepared, Dilution, MRL, Analyzed, Analyst, Method

Subcontracted Analysis - Pace Analytical - Ormond Beach

Table row for Lead: Result < 1, Unit ug/L, Prepared 12/21/23 17:45, Dilution 1, MRL 1, Analyst PACE, Method EPA 200.8 REV 5.4



ANALYTICAL RESULTS

Sample: HA00057-17
Name: FES - 17
Matrix: Drinking Water - Grab

Sampled: 12/21/23 17:47
Received: 01/02/24 15:35

Table with 10 columns: Parameter, Result, Unit, Qualifier, Prepared, Dilution, MRL, Analyzed, Analyst, Method

Subcontracted Analysis - Pace Analytical - Ormond Beach

Table row for Lead: 512 ug/L, 12/21/23 17:47, 1, 1, PACE, EPA 200.8 REV 5.4

Sample: HA00057-18
Name: FES - 18
Matrix: Drinking Water - Grab

Sampled: 12/21/23 17:48
Received: 01/02/24 15:35

Table with 10 columns: Parameter, Result, Unit, Qualifier, Prepared, Dilution, MRL, Analyzed, Analyst, Method

Subcontracted Analysis - Pace Analytical - Ormond Beach

Table row for Lead: < 1 ug/L, 12/21/23 17:48, 1, 1, PACE, EPA 200.8 REV 5.4

Sample: HA00057-19
Name: FES - 19
Matrix: Drinking Water - Grab

Sampled: 12/21/23 17:50
Received: 01/02/24 15:35

Table with 10 columns: Parameter, Result, Unit, Qualifier, Prepared, Dilution, MRL, Analyzed, Analyst, Method

Subcontracted Analysis - Pace Analytical - Ormond Beach

Table row for Lead: 2.5 ug/L, 12/21/23 17:50, 1, 1, PACE, EPA 200.8 REV 5.4

Sample: HA00057-20
Name: FES - 20
Matrix: Drinking Water - Grab

Sampled: 12/21/23 17:52
Received: 01/02/24 15:35

Table with 10 columns: Parameter, Result, Unit, Qualifier, Prepared, Dilution, MRL, Analyzed, Analyst, Method

Subcontracted Analysis - Pace Analytical - Ormond Beach

Table row for Lead: 2.4 ug/L, 12/21/23 17:52, 1, 1, PACE, EPA 200.8 REV 5.4



ANALYTICAL RESULTS

Sample: HA00057-21
Name: FES - 21
Matrix: Drinking Water - Grab

Sampled: 12/21/23 17:53
Received: 01/02/24 15:35

Table with 10 columns: Parameter, Result, Unit, Qualifier, Prepared, Dilution, MRL, Analyzed, Analyst, Method

Subcontracted Analysis - Pace Analytical - Ormond Beach

Table row for Lead: Result 8.5, Unit ug/L, Prepared 12/21/23 17:53, Dilution 1, MRL 1, Analyst PACE, Method EPA 200.8 REV 5.4

Sample: HA00057-22
Name: FES - 22
Matrix: Drinking Water - Grab

Sampled: 12/21/23 17:53
Received: 01/02/24 15:35

Table with 10 columns: Parameter, Result, Unit, Qualifier, Prepared, Dilution, MRL, Analyzed, Analyst, Method

Subcontracted Analysis - Pace Analytical - Ormond Beach

Table row for Lead: Result 1.2, Unit ug/L, Prepared 12/21/23 17:55, Dilution 1, MRL 1, Analyst PACE, Method EPA 200.8 REV 5.4

Sample: HA00057-23
Name: FES - 23
Matrix: Drinking Water - Grab

Sampled: 12/21/23 17:57
Received: 01/02/24 15:35

Table with 10 columns: Parameter, Result, Unit, Qualifier, Prepared, Dilution, MRL, Analyzed, Analyst, Method

Subcontracted Analysis - Pace Analytical - Ormond Beach

Table row for Lead: Result 1.4, Unit ug/L, Prepared 12/21/23 17:57, Dilution 1, MRL 1, Analyst PACE, Method EPA 200.8 REV 5.4

Sample: HA00057-24
Name: FES - 24
Matrix: Drinking Water - Grab

Sampled: 12/21/23 17:58
Received: 01/02/24 15:35

Table with 10 columns: Parameter, Result, Unit, Qualifier, Prepared, Dilution, MRL, Analyzed, Analyst, Method

Subcontracted Analysis - Pace Analytical - Ormond Beach

Table row for Lead: Result 1.4, Unit ug/L, Prepared 12/21/23 17:58, Dilution 1, MRL 1, Analyst PACE, Method EPA 200.8 REV 5.4



ANALYTICAL RESULTS

Sample: HA00057-25
Name: FES - 25
Matrix: Drinking Water - Grab

Sampled: 12/21/23 18:00
Received: 01/02/24 15:35

Table with 10 columns: Parameter, Result, Unit, Qualifier, Prepared, Dilution, MRL, Analyzed, Analyst, Method

Subcontracted Analysis - Pace Analytical - Ormond Beach

Table row for Lead: Result 15.3, Unit ug/L, Prepared 12/21/23 18:00, Dilution 1, MRL 1, Analyst PACE, Method EPA 200.8 REV 5.4

Sample: HA00057-26
Name: FES - 26
Matrix: Drinking Water - Grab

Sampled: 12/21/23 18:01
Received: 01/02/24 15:35

Table with 10 columns: Parameter, Result, Unit, Qualifier, Prepared, Dilution, MRL, Analyzed, Analyst, Method

Subcontracted Analysis - Pace Analytical - Ormond Beach

Table row for Lead: Result 4.1, Unit ug/L, Prepared 12/21/23 18:01, Dilution 1, MRL 1, Analyst PACE, Method EPA 200.8 REV 5.4

Sample: HA00057-27
Name: FES - 27
Matrix: Drinking Water - Grab

Sampled: 12/21/23 18:02
Received: 01/02/24 15:35

Table with 10 columns: Parameter, Result, Unit, Qualifier, Prepared, Dilution, MRL, Analyzed, Analyst, Method

Subcontracted Analysis - Pace Analytical - Ormond Beach

Table row for Lead: Result 1.1, Unit ug/L, Prepared 12/21/23 18:02, Dilution 1, MRL 1, Analyst PACE, Method EPA 200.8 REV 5.4

Sample: HA00057-28
Name: FES - 28
Matrix: Drinking Water - Grab

Sampled: 12/21/23 18:07
Received: 01/02/24 15:35

Table with 10 columns: Parameter, Result, Unit, Qualifier, Prepared, Dilution, MRL, Analyzed, Analyst, Method

Subcontracted Analysis - Pace Analytical - Ormond Beach

Table row for Lead: Result < 1, Unit ug/L, Prepared 12/21/23 18:07, Dilution 1, MRL 1, Analyst PACE, Method EPA 200.8 REV 5.4



ANALYTICAL RESULTS

Sample: HA00057-29
Name: FES - 29
Matrix: Drinking Water - Grab

Sampled: 12/21/23 18:09
Received: 01/02/24 15:35

Table with 10 columns: Parameter, Result, Unit, Qualifier, Prepared, Dilution, MRL, Analyzed, Analyst, Method

Subcontracted Analysis - Pace Analytical - Ormond Beach

Table row for Lead: Result < 1, Unit ug/L, Prepared 12/21/23 18:09, Dilution 1, MRL 1, Analyst PACE, Method EPA 200.8 REV 5.4

Sample: HA00057-30
Name: FES - 30
Matrix: Drinking Water - Grab

Sampled: 12/21/23 18:10
Received: 01/02/24 15:35

Table with 10 columns: Parameter, Result, Unit, Qualifier, Prepared, Dilution, MRL, Analyzed, Analyst, Method

Subcontracted Analysis - Pace Analytical - Ormond Beach

Table row for Lead: Result 4.9, Unit ug/L, Prepared 12/21/23 18:10, Dilution 1, MRL 1, Analyst PACE, Method EPA 200.8 REV 5.4

Sample: HA00057-31
Name: FES - 31
Matrix: Drinking Water - Grab

Sampled: 12/21/23 18:11
Received: 01/02/24 15:35

Table with 10 columns: Parameter, Result, Unit, Qualifier, Prepared, Dilution, MRL, Analyzed, Analyst, Method

Subcontracted Analysis - Pace Analytical - Ormond Beach

Table row for Lead: Result < 1, Unit ug/L, Prepared 12/21/23 18:11, Dilution 1, MRL 1, Analyst PACE, Method EPA 200.8 REV 5.4

Sample: HA00057-32
Name: FES - 32
Matrix: Drinking Water - Grab

Sampled: 12/21/23 18:13
Received: 01/02/24 15:35

Table with 10 columns: Parameter, Result, Unit, Qualifier, Prepared, Dilution, MRL, Analyzed, Analyst, Method

Subcontracted Analysis - Pace Analytical - Ormond Beach

Table row for Lead: Result < 1, Unit ug/L, Prepared 12/21/23 18:13, Dilution 1, MRL 1, Analyst PACE, Method EPA 200.8 REV 5.4





ANALYTICAL RESULTS

Sample: HA00057-33
Name: FES - 33
Matrix: Drinking Water - Grab

Sampled: 12/21/23 18:14
Received: 01/02/24 15:35

Table with 10 columns: Parameter, Result, Unit, Qualifier, Prepared, Dilution, MRL, Analyzed, Analyst, Method

Subcontracted Analysis - Pace Analytical - Ormond Beach

Table row for Lead: Result < 1, Unit ug/L, Prepared 12/21/23 18:14, Dilution 1, MRL 1, Analyst PACE, Method EPA 200.8 REV 5.4

Sample: HA00057-34
Name: FES - 34
Matrix: Drinking Water - Grab

Sampled: 12/21/23 18:17
Received: 01/02/24 15:35

Table with 10 columns: Parameter, Result, Unit, Qualifier, Prepared, Dilution, MRL, Analyzed, Analyst, Method

Subcontracted Analysis - Pace Analytical - Ormond Beach

Table row for Lead: Result 5.6, Unit ug/L, Prepared 12/21/23 18:17, Dilution 1, MRL 1, Analyst PACE, Method EPA 200.8 REV 5.4

Sample: HA00057-35
Name: FES - 35
Matrix: Drinking Water - Grab

Sampled: 12/21/23 18:20
Received: 01/02/24 15:35

Table with 10 columns: Parameter, Result, Unit, Qualifier, Prepared, Dilution, MRL, Analyzed, Analyst, Method

Subcontracted Analysis - Pace Analytical - Ormond Beach

Table row for Lead: Result < 1, Unit ug/L, Prepared 12/21/23 18:20, Dilution 1, MRL 1, Analyst PACE, Method EPA 200.8 REV 5.4

Sample: HA00057-36
Name: FES - 36
Matrix: Drinking Water - Grab

Sampled: 12/21/23 18:22
Received: 01/02/24 15:35

Table with 10 columns: Parameter, Result, Unit, Qualifier, Prepared, Dilution, MRL, Analyzed, Analyst, Method

Subcontracted Analysis - Pace Analytical - Ormond Beach

Table row for Lead: Result 9.0, Unit ug/L, Prepared 12/21/23 18:22, Dilution 1, MRL 1, Analyst PACE, Method EPA 200.8 REV 5.4



ANALYTICAL RESULTS

Sample: HA00057-37
Name: FES - 37
Matrix: Drinking Water - Grab

Sampled: 12/21/23 18:26
Received: 01/02/24 15:35

Table with 10 columns: Parameter, Result, Unit, Qualifier, Prepared, Dilution, MRL, Analyzed, Analyst, Method

Subcontracted Analysis - Pace Analytical - Ormond Beach

Table row for Lead: < 1 ug/L, 12/21/23 18:26, 1, 1, PACE, EPA 200.8 REV 5.4

Sample: HA00057-38
Name: FES - 38
Matrix: Drinking Water - Grab

Sampled: 12/21/23 18:28
Received: 01/02/24 15:35

Table with 10 columns: Parameter, Result, Unit, Qualifier, Prepared, Dilution, MRL, Analyzed, Analyst, Method

Subcontracted Analysis - Pace Analytical - Ormond Beach

Table row for Lead: < 1 ug/L, 12/21/23 18:28, 1, 1, PACE, EPA 200.8 REV 5.4

Sample: HA00057-39
Name: FES - 39
Matrix: Drinking Water - Grab

Sampled: 12/21/23 18:31
Received: 01/02/24 15:35

Table with 10 columns: Parameter, Result, Unit, Qualifier, Prepared, Dilution, MRL, Analyzed, Analyst, Method

Subcontracted Analysis - Pace Analytical - Ormond Beach

Table row for Lead: < 1 ug/L, 12/21/23 18:31, 1, 1, PACE, EPA 200.8 REV 5.4

Sample: HA00057-40
Name: FES - 40
Matrix: Drinking Water - Grab

Sampled: 12/21/23 18:33
Received: 01/02/24 15:35

Table with 10 columns: Parameter, Result, Unit, Qualifier, Prepared, Dilution, MRL, Analyzed, Analyst, Method

Subcontracted Analysis - Pace Analytical - Ormond Beach

Table row for Lead: < 1 ug/L, 12/21/23 18:33, 1, 1, PACE, EPA 200.8 REV 5.4



ANALYTICAL RESULTS

Sample: HA00057-41
Name: FES - 41
Matrix: Drinking Water - Grab

Sampled: 12/21/23 18:35
Received: 01/02/24 15:35

Table with 10 columns: Parameter, Result, Unit, Qualifier, Prepared, Dilution, MRL, Analyzed, Analyst, Method

Subcontracted Analysis - Pace Analytical - Ormond Beach

Table row for Lead: Result < 1, Unit ug/L, Prepared 12/21/23 18:35, Dilution 1, MRL 1, Analyst PACE, Method EPA 200.8 REV 5.4

Sample: HA00057-42
Name: FES - 42
Matrix: Drinking Water - Grab

Sampled: 12/21/23 18:37
Received: 01/02/24 15:35

Table with 10 columns: Parameter, Result, Unit, Qualifier, Prepared, Dilution, MRL, Analyzed, Analyst, Method

Subcontracted Analysis - Pace Analytical - Ormond Beach

Table row for Lead: Result < 1, Unit ug/L, Prepared 12/21/23 18:37, Dilution 1, MRL 1, Analyst PACE, Method EPA 200.8 REV 5.4

Sample: HA00057-43
Name: FES - 43
Matrix: Drinking Water - Grab

Sampled: 12/21/23 18:38
Received: 01/02/24 15:35

Table with 10 columns: Parameter, Result, Unit, Qualifier, Prepared, Dilution, MRL, Analyzed, Analyst, Method

Subcontracted Analysis - Pace Analytical - Ormond Beach

Table row for Lead: Result < 1, Unit ug/L, Prepared 12/21/23 18:38, Dilution 1, MRL 1, Analyst PACE, Method EPA 200.8 REV 5.4

Sample: HA00057-44
Name: FES - 44
Matrix: Drinking Water - Grab

Sampled: 12/21/23 18:39
Received: 01/02/24 15:35

Table with 10 columns: Parameter, Result, Unit, Qualifier, Prepared, Dilution, MRL, Analyzed, Analyst, Method

Subcontracted Analysis - Pace Analytical - Ormond Beach

Table row for Lead: Result < 1, Unit ug/L, Prepared 12/21/23 18:39, Dilution 1, MRL 1, Analyst PACE, Method EPA 200.8 REV 5.4



ANALYTICAL RESULTS

Sample: HA00057-45
Name: FES - 45
Matrix: Drinking Water - Grab

Sampled: 12/21/23 18:41
Received: 01/02/24 15:35

Table with 10 columns: Parameter, Result, Unit, Qualifier, Prepared, Dilution, MRL, Analyzed, Analyst, Method

Subcontracted Analysis - Pace Analytical - Ormond Beach

Table row for Lead: < 1 ug/L, 12/21/23 18:41, 1, 1, PACE, EPA 200.8 REV 5.4

Sample: HA00057-46
Name: FES - 46
Matrix: Drinking Water - Grab

Sampled: 12/21/23 18:43
Received: 01/02/24 15:35

Table with 10 columns: Parameter, Result, Unit, Qualifier, Prepared, Dilution, MRL, Analyzed, Analyst, Method

Subcontracted Analysis - Pace Analytical - Ormond Beach

Table row for Lead: < 1 ug/L, 12/21/23 18:43, 1, 1, PACE, EPA 200.8 REV 5.4

Sample: HA00057-47
Name: FES - 47
Matrix: Drinking Water - Grab

Sampled: 12/21/23 18:45
Received: 01/02/24 15:35

Table with 10 columns: Parameter, Result, Unit, Qualifier, Prepared, Dilution, MRL, Analyzed, Analyst, Method

Subcontracted Analysis - Pace Analytical - Ormond Beach

Table row for Lead: < 1 ug/L, 12/21/23 18:45, 1, 1, PACE, EPA 200.8 REV 5.4

Sample: HA00057-48
Name: FES - 48
Matrix: Drinking Water - Grab

Sampled: 12/21/23 18:47
Received: 01/02/24 15:35

Table with 10 columns: Parameter, Result, Unit, Qualifier, Prepared, Dilution, MRL, Analyzed, Analyst, Method

Subcontracted Analysis - Pace Analytical - Ormond Beach

Table row for Lead: < 1 ug/L, 12/21/23 18:47, 1, 1, PACE, EPA 200.8 REV 5.4



**QC SAMPLE RESULTS**

Parameter	Result	Unit	Qual	Spike Level	Source Result	%REC	%REC Limits	RPD	RPD Limit
<b><u>Batch [none] - DW 200.8 no prep - EPA 200.8 REV 5.4</u></b>									
<b>BLK (BATCH-BLK1 (Water))</b>				Prepared & Analyzed:					
Lead	< 0.2	ug/L					0-0		0
<b>BS (BATCH-BS1 (Water))</b>				Prepared & Analyzed:					
Lead	< 0.2	ug/L					85-115		20
<b>MS (BATCH-MS1 (Water))</b>				Prepared & Analyzed:					
Lead	< 0.2	ug/L					70-130		20
<b>MSD (BATCH-MSD1 (Water))</b>				Prepared & Analyzed:					
Lead	< 0.2	ug/L					70-130		20



NOTES

Specifications regarding method revisions, method modifications, and calculations used for analysis are available upon request. Please contact your project manager.

\* Not a TNI accredited analyte

**Certifications**

CHI - McHenry, IL - 4314-A W. Crystal Lake Road, McHenry, IL 60050

TNI Accreditation for Drinking Water and Wastewater Fields of Testing through IL EPA Accreditation No. 100279

Illinois Department of Public Health Bacterial Analysis in Drinking Water Approved Laboratory Registry No. 17556

PIA - Peoria, IL - 2231 W. Altorfer Drive, Peoria, IL 61615

TNI Accreditation for Drinking Water, Wastewater, Solid and Hazardous Material Fields of Testing through IL EPA Accreditation No. 100230

Illinois Department of Public Health Bacterial Analysis in Drinking Water Approved Laboratory Registry No. 17553

Drinking Water Certifications/Accreditations: Iowa (240); Kansas (E-10338); Missouri (870)

Wastewater Certifications/Accreditations: Arkansas (88-0677); Iowa (240); Kansas (E-10338)

Solid and Hazardous Material Certifications/Accreditations: Arkansas (88-0677); Iowa (240); Kansas (E-10338)

SPMO - Springfield, MO - 1805 W Sunset Street, Springfield, MO 65807

USEPA DMR-QA Program

STL - Hazelwood, MO - 944 Anglum Rd, Hazelwood, MO 63042

TNI Accreditation for Wastewater, Solid and Hazardous Material Fields of Testing through KS KDHE Certification No. E-10389

TNI Accreditation for Wastewater, Solid and Hazardous Material Fields of Testing through IL EPA Accreditation No. - 200080

Illinois Department of Public Health Bacterial Analysis in Drinking Water Approved Laboratory, Registry No. 171050

Missouri Department of Natural Resources - Certificate of Approval for Microbiological Laboratory Service - No. 1050



Certified by: Chenise Lambert-Sykes, Project Manager



January 08, 2024

Chenise Lambert-Sykes  
Pace Analytical Services, Inc - IL/MO  
944 Anglum Road  
Hazelwood, MO 63042

RE: Project: HA00057  
Pace Project No.: 35851652

Dear Chenise Lambert-Sykes:

Enclosed are the analytical results for sample(s) received by the laboratory on January 04, 2024. The results relate only to the samples included in this report. Results reported herein conform to the applicable TNI/NELAC Standards and the laboratory's Quality Manual, where applicable, unless otherwise noted in the body of the report.

The test results provided in this final report were generated by each of the following laboratories within the Pace Network:

- Pace Analytical Services - Ormond Beach

If you have any questions concerning this report, please feel free to contact me.

Sincerely,

Brad Smith  
brad.smith@pacelabs.com  
(386) 672-5668  
Project Manager

Enclosures



## REPORT OF LABORATORY ANALYSIS

This report shall not be reproduced, except in full,  
without the written consent of Pace Analytical Services, LLC.



### CERTIFICATIONS

Project: HA00057

Pace Project No.: 35851652

#### Pace Analytical Services Ormond Beach

8 East Tower Circle, Ormond Beach, FL 32174

Alaska DEC- CS/UST/LUST

Alabama Certification #: 41320

California Certification# 3096

Colorado Certification: FL NELAC Reciprocity

Connecticut Certification #: PH-0216

Delaware Certification: FL NELAC Reciprocity

DoD-ANAB #:ADE-3199

Florida Certification #: E83079

Georgia Certification #: 955

Guam Certification: FL NELAC Reciprocity

Hawaii Certification: FL NELAC Reciprocity

Illinois Certification #: 200068

Indiana Certification: FL NELAC Reciprocity

Kansas Certification #: E-10383

Kentucky Certification #: 90050

Louisiana Certification #: FL NELAC Reciprocity

Louisiana Environmental Certificate #: 05007

Maine Certification #: FL01264

Maryland Certification: #346

Massachusetts Certification #: M-FL1264

Michigan Certification #: 9911

Mississippi Certification: FL NELAC Reciprocity

Missouri Certification #: 236

Montana Certification #: Cert 0074

Nebraska Certification: NE-OS-28-14

New Hampshire Certification #: 2958

New Jersey Certification #: FL022

New York Certification #: 11608

North Carolina Environmental Certificate #: 667

North Carolina Certification #: 12710

North Dakota Certification #: R-216

Ohio DEP 87780

Oklahoma Certification #: D9947

Pennsylvania Certification #: 68-00547

Puerto Rico Certification #: FL01264

South Carolina Certification: #96042001

Tennessee Certification #: TN02974

Texas Certification: FL NELAC Reciprocity

US Virgin Islands Certification: FL NELAC Reciprocity

Virginia Environmental Certification #: 460165

West Virginia Certification #: 9962C

Wisconsin Certification #: 399079670

Wyoming (EPA Region 8): FL NELAC Reciprocity

### REPORT OF LABORATORY ANALYSIS

This report shall not be reproduced, except in full,  
without the written consent of Pace Analytical Services, LLC.





### SAMPLE ANALYTE COUNT

Project: HA00057

Pace Project No.: 35851652

Lab ID	Sample ID	Method	Analysts	Analytes Reported	Laboratory
35851652001	HA00057-01	EPA 200.8	BSL	1	PASI-O
35851652002	HA00057-02	EPA 200.8	BSL	1	PASI-O
35851652003	HA00057-03	EPA 200.8	BSL	1	PASI-O
35851652004	HA00057-04	EPA 200.8	BSL	1	PASI-O
35851652005	HA00057-05	EPA 200.8	BSL	1	PASI-O
35851652006	HA00057-06	EPA 200.8	BSL	1	PASI-O
35851652007	HA00057-07	EPA 200.8	BSL	1	PASI-O
35851652008	HA00057-08	EPA 200.8	BSL	1	PASI-O
35851652009	HA00057-09	EPA 200.8	BSL	1	PASI-O
35851652010	HA00057-10	EPA 200.8	BSL	1	PASI-O
35851652011	HA00057-11	EPA 200.8	BSL	1	PASI-O
35851652012	HA00057-12	EPA 200.8	BSL	1	PASI-O
35851652013	HA00057-13	EPA 200.8	BSL	1	PASI-O
35851652014	HA00057-14	EPA 200.8	BSL	1	PASI-O
35851652015	HA00057-15	EPA 200.8	BSL	1	PASI-O
35851652016	HA00057-16	EPA 200.8	BSL	1	PASI-O
35851652017	HA00057-17	EPA 200.8	EAP	1	PASI-O
35851652018	HA00057-18	EPA 200.8	EAP	1	PASI-O
35851652019	HA00057-19	EPA 200.8	BSL	1	PASI-O
35851652020	HA00057-20	EPA 200.8	BSL	1	PASI-O
35851652021	HA00057-21	EPA 200.8	BSL	1	PASI-O
35851652022	HA00057-22	EPA 200.8	BSL	1	PASI-O
35851652023	HA00057-23	EPA 200.8	BSL	1	PASI-O
35851652024	HA00057-24	EPA 200.8	BSL	1	PASI-O
35851652025	HA00057-25	EPA 200.8	BSL	1	PASI-O
35851652026	HA00057-26	EPA 200.8	BSL	1	PASI-O
35851652027	HA00057-27	EPA 200.8	BSL	1	PASI-O
35851652028	HA00057-28	EPA 200.8	BSL	1	PASI-O
35851652029	HA00057-29	EPA 200.8	BSL	1	PASI-O
35851652030	HA00057-30	EPA 200.8	BSL	1	PASI-O
35851652031	HA00057-31	EPA 200.8	BSL	1	PASI-O
35851652032	HA00057-32	EPA 200.8	BSL	1	PASI-O
35851652033	HA00057-33	EPA 200.8	BSL	1	PASI-O
35851652034	HA00057-34	EPA 200.8	BSL	1	PASI-O
35851652035	HA00057-35	EPA 200.8	BSL	1	PASI-O
35851652036	HA00057-36	EPA 200.8	BSL	1	PASI-O
35851652037	HA00057-37	EPA 200.8	BSL	1	PASI-O

### REPORT OF LABORATORY ANALYSIS

This report shall not be reproduced, except in full, without the written consent of Pace Analytical Services, LLC.



### SAMPLE ANALYTE COUNT

Project: HA00057

Pace Project No.: 35851652

Lab ID	Sample ID	Method	Analysts	Analytes Reported	Laboratory
35851652038	HA00057-38	EPA 200.8	BSL	1	PASI-O
35851652039	HA00057-39	EPA 200.8	BSL	1	PASI-O
35851652040	HA00057-40	EPA 200.8	BSL	1	PASI-O
35851652041	HA00057-41	EPA 200.8	BSL	1	PASI-O
35851652042	HA00057-42	EPA 200.8	BSL	1	PASI-O
35851652043	HA00057-43	EPA 200.8	BSL	1	PASI-O
35851652044	HA00057-44	EPA 200.8	BSL	1	PASI-O
35851652045	HA00057-45	EPA 200.8	BSL	1	PASI-O
35851652046	HA00057-46	EPA 200.8	BSL	1	PASI-O
35851652047	HA00057-47	EPA 200.8	BSL	1	PASI-O
35851652048	HA00057-48	EPA 200.8	BSL	1	PASI-O

PASI-O = Pace Analytical Services - Ormond Beach

### REPORT OF LABORATORY ANALYSIS

This report shall not be reproduced, except in full,  
without the written consent of Pace Analytical Services, LLC.



### ANALYTICAL RESULTS

Project: HA00057

Pace Project No.: 35851652

Sample: HA00057-01		Lab ID: 35851652001	Collected: 12/21/23 18:13	Received: 01/04/24 10:25	Matrix: Drinking Water			
Parameters	Results	Units	Report Limit	DF	Prepared	Analyzed	CAS No.	Qual
<b>200.8 MET ICPMS Drinking Water</b>		Analytical Method: EPA 200.8 Pace Analytical Services - Ormond Beach						
Lead	ND	ug/L	1.0	1		01/05/24 14:56	7439-92-1	

### REPORT OF LABORATORY ANALYSIS

This report shall not be reproduced, except in full,  
without the written consent of Pace Analytical Services, LLC.



### ANALYTICAL RESULTS

Project: HA00057

Pace Project No.: 35851652

Parameters	Results	Units	Report Limit	DF	Prepared	Analyzed	CAS No.	Qual
<b>Sample: HA00057-02</b>								
<b>Lab ID: 35851652002</b>								
Collected: 12/21/23 18:16 Received: 01/04/24 10:25 Matrix: Drinking Water								
<b>200.8 MET ICPMS Drinking Water</b>								
Analytical Method: EPA 200.8								
Pace Analytical Services - Ormond Beach								
Lead	ND	ug/L	1.0	1		01/05/24 15:01	7439-92-1	

### REPORT OF LABORATORY ANALYSIS

This report shall not be reproduced, except in full, without the written consent of Pace Analytical Services, LLC.



### ANALYTICAL RESULTS

Project: HA00057  
Pace Project No.: 35851652

Sample: HA00057-03		Lab ID: 35851652003		Collected: 12/21/23 18:19	Received: 01/04/24 10:25	Matrix: Drinking Water		
Parameters	Results	Units	Report Limit	DF	Prepared	Analyzed	CAS No.	Qual
<b>200.8 MET ICPMS Drinking Water</b>		Analytical Method: EPA 200.8 Pace Analytical Services - Ormond Beach						
Lead	ND	ug/L	1.0	1		01/05/24 15:02	7439-92-1	

### REPORT OF LABORATORY ANALYSIS

This report shall not be reproduced, except in full,  
without the written consent of Pace Analytical Services, LLC.



### ANALYTICAL RESULTS

Project: HA00057

Pace Project No.: 35851652

Sample: HA00057-04	Lab ID: 35851652004	Collected: 12/21/23 18:21	Received: 01/04/24 10:25	Matrix: Drinking Water					
Parameters	Results	Units	Report Limit	DF	Prepared	Analyzed	CAS No.	Qual	
<b>200.8 MET ICPMS Drinking Water</b>	Analytical Method: EPA 200.8 Pace Analytical Services - Ormond Beach								
Lead	ND	ug/L	1.0	1		01/05/24 15:04	7439-92-1		

### REPORT OF LABORATORY ANALYSIS

This report shall not be reproduced, except in full,  
without the written consent of Pace Analytical Services, LLC.



### ANALYTICAL RESULTS

Project: HA00057

Pace Project No.: 35851652

Parameters	Results	Units	Report Limit	DF	Prepared	Analyzed	CAS No.	Qual
<b>Sample: HA00057-05</b>								
<b>Lab ID: 35851652005</b>								
Collected: 12/21/23 18:24								
Received: 01/04/24 10:25								
Matrix: Drinking Water								
<b>200.8 MET ICPMS Drinking Water</b>								
Analytical Method: EPA 200.8								
Pace Analytical Services - Ormond Beach								
Lead	ND	ug/L	1.0	1		01/05/24 15:05	7439-92-1	

### REPORT OF LABORATORY ANALYSIS

This report shall not be reproduced, except in full,  
without the written consent of Pace Analytical Services, LLC.



### ANALYTICAL RESULTS

Project: HA00057

Pace Project No.: 35851652

Sample: HA00057-06		Lab ID: 35851652006	Collected: 12/21/23 18:26	Received: 01/04/24 10:25	Matrix: Drinking Water			
Parameters	Results	Units	Report Limit	DF	Prepared	Analyzed	CAS No.	Qual
<b>200.8 MET ICPMS Drinking Water</b>		Analytical Method: EPA 200.8 Pace Analytical Services - Ormond Beach						
Lead	ND	ug/L	1.0	1		01/05/24 15:06	7439-92-1	

### REPORT OF LABORATORY ANALYSIS

This report shall not be reproduced, except in full,  
without the written consent of Pace Analytical Services, LLC.





### ANALYTICAL RESULTS

Project: HA00057

Pace Project No.: 35851652

Sample: HA00057-07		Lab ID: 35851652007	Collected: 12/21/23 18:28	Received: 01/04/24 10:25	Matrix: Drinking Water			
Parameters	Results	Units	Report Limit	DF	Prepared	Analyzed	CAS No.	Qual
<b>200.8 MET ICPMS Drinking Water</b>		Analytical Method: EPA 200.8 Pace Analytical Services - Ormond Beach						
Lead	ND	ug/L	1.0	1		01/05/24 15:08	7439-92-1	

### REPORT OF LABORATORY ANALYSIS

This report shall not be reproduced, except in full,  
without the written consent of Pace Analytical Services, LLC.



### ANALYTICAL RESULTS

Project: HA00057

Pace Project No.: 35851652

Sample: HA00057-08		Lab ID: 35851652008	Collected: 12/21/23 18:30	Received: 01/04/24 10:25	Matrix: Drinking Water			
Parameters	Results	Units	Report Limit	DF	Prepared	Analyzed	CAS No.	Qual
<b>200.8 MET ICPMS Drinking Water</b>		Analytical Method: EPA 200.8 Pace Analytical Services - Ormond Beach						
Lead	ND	ug/L	1.0	1		01/05/24 15:09	7439-92-1	

### REPORT OF LABORATORY ANALYSIS

This report shall not be reproduced, except in full,  
without the written consent of Pace Analytical Services, LLC.



### ANALYTICAL RESULTS

Project: HA00057

Pace Project No.: 35851652

Sample: HA00057-09		Lab ID: 35851652009	Collected: 12/21/23 18:32	Received: 01/04/24 10:25	Matrix: Drinking Water			
Parameters	Results	Units	Report Limit	DF	Prepared	Analyzed	CAS No.	Qual
<b>200.8 MET ICPMS Drinking Water</b>		Analytical Method: EPA 200.8 Pace Analytical Services - Ormond Beach						
Lead	ND	ug/L	1.0	1		01/05/24 15:11	7439-92-1	

### REPORT OF LABORATORY ANALYSIS

This report shall not be reproduced, except in full,  
without the written consent of Pace Analytical Services, LLC.



### ANALYTICAL RESULTS

Project: HA00057  
Pace Project No.: 35851652

Sample: HA00057-10		Lab ID: 35851652010	Collected: 12/21/23 18:35	Received: 01/04/24 10:25	Matrix: Drinking Water			
Parameters	Results	Units	Report Limit	DF	Prepared	Analyzed	CAS No.	Qual
<b>200.8 MET ICPMS Drinking Water</b>		Analytical Method: EPA 200.8 Pace Analytical Services - Ormond Beach						
Lead	1.6	ug/L	1.0	1		01/05/24 15:12	7439-92-1	

### REPORT OF LABORATORY ANALYSIS

This report shall not be reproduced, except in full,  
without the written consent of Pace Analytical Services, LLC.



### ANALYTICAL RESULTS

Project: HA00057

Pace Project No.: 35851652

Sample: HA00057-11		Lab ID: 35851652011	Collected: 12/21/23 18:36	Received: 01/04/24 10:25	Matrix: Drinking Water			
Parameters	Results	Units	Report Limit	DF	Prepared	Analyzed	CAS No.	Qual
<b>200.8 MET ICPMS Drinking Water</b>		Analytical Method: EPA 200.8 Pace Analytical Services - Ormond Beach						
Lead	<b>5.6</b>	ug/L	1.0	1		01/05/24 15:13	7439-92-1	

### REPORT OF LABORATORY ANALYSIS

This report shall not be reproduced, except in full,  
without the written consent of Pace Analytical Services, LLC.



### ANALYTICAL RESULTS

Project: HA00057

Pace Project No.: 35851652

Sample: HA00057-12		Lab ID: 35851652012	Collected: 12/21/23 18:38	Received: 01/04/24 10:25	Matrix: Drinking Water			
Parameters	Results	Units	Report Limit	DF	Prepared	Analyzed	CAS No.	Qual
<b>200.8 MET ICPMS Drinking Water</b>		Analytical Method: EPA 200.8 Pace Analytical Services - Ormond Beach						
Lead	<b>23.3</b>	ug/L	1.0	1		01/05/24 15:18	7439-92-1	

### REPORT OF LABORATORY ANALYSIS

This report shall not be reproduced, except in full,  
without the written consent of Pace Analytical Services, LLC.



### ANALYTICAL RESULTS

Project: HA00057

Pace Project No.: 35851652

Sample: HA00057-13	Lab ID: 35851652013	Collected: 12/21/23 18:40	Received: 01/04/24 10:25	Matrix: Drinking Water				
Parameters	Results	Units	Report Limit	DF	Prepared	Analyzed	CAS No.	Qual
<b>200.8 MET ICPMS Drinking Water</b>	Analytical Method: EPA 200.8 Pace Analytical Services - Ormond Beach							
Lead	ND	ug/L	1.0	1		01/05/24 15:19	7439-92-1	

### REPORT OF LABORATORY ANALYSIS

This report shall not be reproduced, except in full,  
without the written consent of Pace Analytical Services, LLC.



### ANALYTICAL RESULTS

Project: HA00057

Pace Project No.: 35851652

Sample: HA00057-14		Lab ID: 35851652014	Collected: 12/21/23 18:41	Received: 01/04/24 10:25	Matrix: Drinking Water			
Parameters	Results	Units	Report Limit	DF	Prepared	Analyzed	CAS No.	Qual
<b>200.8 MET ICPMS Drinking Water</b>		Analytical Method: EPA 200.8 Pace Analytical Services - Ormond Beach						
Lead	ND	ug/L	1.0	1		01/05/24 15:26	7439-92-1	

### REPORT OF LABORATORY ANALYSIS

This report shall not be reproduced, except in full,  
without the written consent of Pace Analytical Services, LLC.





### ANALYTICAL RESULTS

Project: HA00057  
Pace Project No.: 35851652

Sample: HA00057-15		Lab ID: 35851652015	Collected: 12/21/23 18:42	Received: 01/04/24 10:25	Matrix: Drinking Water			
Parameters	Results	Units	Report Limit	DF	Prepared	Analyzed	CAS No.	Qual
<b>200.8 MET ICPMS Drinking Water</b>		Analytical Method: EPA 200.8 Pace Analytical Services - Ormond Beach						
Lead	ND	ug/L	1.0	1		01/05/24 15:31	7439-92-1	

### REPORT OF LABORATORY ANALYSIS

This report shall not be reproduced, except in full,  
without the written consent of Pace Analytical Services, LLC.



### ANALYTICAL RESULTS

Project: HA00057

Pace Project No.: 35851652

Sample: HA00057-16		Lab ID: 35851652016	Collected: 12/21/23 18:45	Received: 01/04/24 10:25	Matrix: Drinking Water			
Parameters	Results	Units	Report Limit	DF	Prepared	Analyzed	CAS No.	Qual
<b>200.8 MET ICPMS Drinking Water</b>		Analytical Method: EPA 200.8 Pace Analytical Services - Ormond Beach						
Lead	ND	ug/L	1.0	1		01/05/24 15:35	7439-92-1	

### REPORT OF LABORATORY ANALYSIS

This report shall not be reproduced, except in full,  
without the written consent of Pace Analytical Services, LLC.



### ANALYTICAL RESULTS

Project: HA00057

Pace Project No.: 35851652

Sample: HA00057-17		Lab ID: 35851652017	Collected: 12/21/23 18:47	Received: 01/04/24 10:25	Matrix: Drinking Water			
Parameters	Results	Units	Report Limit	DF	Prepared	Analyzed	CAS No.	Qual
<b>200.8 MET ICPMS Drinking Water</b>		Analytical Method: EPA 200.8 Preparation Method: EPA 200.8 Pace Analytical Services - Ormond Beach						
Lead	<b>512</b>	ug/L	10.0	10	01/05/24 22:58	01/07/24 16:11	7439-92-1	J(M1)

### REPORT OF LABORATORY ANALYSIS

This report shall not be reproduced, except in full,  
without the written consent of Pace Analytical Services, LLC.



### ANALYTICAL RESULTS

Project: HA00057

Pace Project No.: 35851652

Sample: HA00057-18		Lab ID: 35851652018	Collected: 12/21/23 18:48	Received: 01/04/24 10:25	Matrix: Drinking Water			
Parameters	Results	Units	Report Limit	DF	Prepared	Analyzed	CAS No.	Qual
<b>200.8 MET ICPMS Drinking Water</b>		Analytical Method: EPA 200.8 Preparation Method: EPA 200.8 Pace Analytical Services - Ormond Beach						
Lead	ND	ug/L	1.0	1	01/05/24 22:58	01/06/24 15:23	7439-92-1	

### REPORT OF LABORATORY ANALYSIS

This report shall not be reproduced, except in full,  
without the written consent of Pace Analytical Services, LLC.



### ANALYTICAL RESULTS

Project: HA00057

Pace Project No.: 35851652

Sample: HA00057-19		Lab ID: 35851652019	Collected: 12/21/23 18:50	Received: 01/04/24 10:25	Matrix: Drinking Water			
Parameters	Results	Units	Report Limit	DF	Prepared	Analyzed	CAS No.	Qual
<b>200.8 MET ICPMS Drinking Water</b>		Analytical Method: EPA 200.8 Pace Analytical Services - Ormond Beach						
Lead	<b>2.5</b>	ug/L	1.0	1		01/05/24 15:36	7439-92-1	

### REPORT OF LABORATORY ANALYSIS

This report shall not be reproduced, except in full,  
without the written consent of Pace Analytical Services, LLC.



### ANALYTICAL RESULTS

Project: HA00057

Pace Project No.: 35851652

Sample: HA00057-20	Lab ID: 35851652020	Collected: 12/21/23 18:52	Received: 01/04/24 10:25	Matrix: Drinking Water				
Parameters	Results	Units	Report Limit	DF	Prepared	Analyzed	CAS No.	Qual
<b>200.8 MET ICPMS Drinking Water</b>	Analytical Method: EPA 200.8 Pace Analytical Services - Ormond Beach							
Lead	<b>2.4</b>	ug/L	1.0	1		01/05/24 15:38	7439-92-1	

### REPORT OF LABORATORY ANALYSIS

This report shall not be reproduced, except in full,  
without the written consent of Pace Analytical Services, LLC.



### ANALYTICAL RESULTS

Project: HA00057

Pace Project No.: 35851652

Sample: HA00057-21		Lab ID: 35851652021	Collected: 12/21/23 18:53	Received: 01/04/24 10:25	Matrix: Drinking Water			
Parameters	Results	Units	Report Limit	DF	Prepared	Analyzed	CAS No.	Qual
<b>200.8 MET ICPMS Drinking Water</b>		Analytical Method: EPA 200.8 Pace Analytical Services - Ormond Beach						
Lead	<b>8.5</b>	ug/L	1.0	1		01/05/24 15:39	7439-92-1	

### REPORT OF LABORATORY ANALYSIS

This report shall not be reproduced, except in full,  
without the written consent of Pace Analytical Services, LLC.



### ANALYTICAL RESULTS

Project: HA00057

Pace Project No.: 35851652

Parameters	Results	Units	Report Limit	DF	Prepared	Analyzed	CAS No.	Qual
<b>Sample: HA00057-22</b>								
<b>Lab ID: 35851652022</b>								
Collected: 12/21/23 18:55								
Received: 01/04/24 10:25								
Matrix: Drinking Water								
<b>200.8 MET ICPMS Drinking Water</b>								
Analytical Method: EPA 200.8								
Pace Analytical Services - Ormond Beach								
Lead	1.2	ug/L	1.0	1		01/05/24 15:41	7439-92-1	

### REPORT OF LABORATORY ANALYSIS

This report shall not be reproduced, except in full, without the written consent of Pace Analytical Services, LLC.





### ANALYTICAL RESULTS

Project: HA00057

Pace Project No.: 35851652

Sample: HA00057-23		Lab ID: 35851652023	Collected: 12/21/23 18:57	Received: 01/04/24 10:25	Matrix: Drinking Water			
Parameters	Results	Units	Report Limit	DF	Prepared	Analyzed	CAS No.	Qual
<b>200.8 MET ICPMS Drinking Water</b>		Analytical Method: EPA 200.8 Pace Analytical Services - Ormond Beach						
Lead	1.4	ug/L	1.0	1		01/05/24 15:42	7439-92-1	

### REPORT OF LABORATORY ANALYSIS

This report shall not be reproduced, except in full,  
without the written consent of Pace Analytical Services, LLC.



### ANALYTICAL RESULTS

Project: HA00057

Pace Project No.: 35851652

Parameters	Results	Units	Report Limit	DF	Prepared	Analyzed	CAS No.	Qual
<b>Sample: HA00057-24</b>								
<b>Lab ID: 35851652024</b>								
Collected: 12/21/23 18:58								
Received: 01/04/24 10:25								
Matrix: Drinking Water								
<b>200.8 MET ICPMS Drinking Water</b>								
Analytical Method: EPA 200.8								
Pace Analytical Services - Ormond Beach								
Lead	1.4	ug/L	1.0	1		01/05/24 15:43	7439-92-1	

### REPORT OF LABORATORY ANALYSIS

This report shall not be reproduced, except in full,  
without the written consent of Pace Analytical Services, LLC.



### ANALYTICAL RESULTS

Project: HA00057

Pace Project No.: 35851652

Sample: HA00057-25		Lab ID: 35851652025	Collected: 12/21/23 19:00	Received: 01/04/24 10:25	Matrix: Drinking Water			
Parameters	Results	Units	Report Limit	DF	Prepared	Analyzed	CAS No.	Qual
<b>200.8 MET ICPMS Drinking Water</b>		Analytical Method: EPA 200.8 Pace Analytical Services - Ormond Beach						
Lead	<b>15.3</b>	ug/L	1.0	1		01/05/24 15:45	7439-92-1	

### REPORT OF LABORATORY ANALYSIS

This report shall not be reproduced, except in full,  
without the written consent of Pace Analytical Services, LLC.



### ANALYTICAL RESULTS

Project: HA00057

Pace Project No.: 35851652

Parameters	Results	Units	Report Limit	DF	Prepared	Analyzed	CAS No.	Qual
<b>Sample: HA00057-26</b>								
<b>Lab ID: 35851652026</b>								
Collected: 12/21/23 19:01 Received: 01/04/24 10:25 Matrix: Drinking Water								
<b>200.8 MET ICPMS Drinking Water</b>								
Analytical Method: EPA 200.8								
Pace Analytical Services - Ormond Beach								
Lead	4.1	ug/L	1.0	1		01/05/24 15:46	7439-92-1	

### REPORT OF LABORATORY ANALYSIS

This report shall not be reproduced, except in full, without the written consent of Pace Analytical Services, LLC.



### ANALYTICAL RESULTS

Project: HA00057

Pace Project No.: 35851652

Parameters	Results	Units	Report Limit	DF	Prepared	Analyzed	CAS No.	Qual
<b>Sample: HA00057-27</b>								
<b>Lab ID: 35851652027</b>								
Collected: 12/21/23 19:02								
Received: 01/04/24 10:25								
Matrix: Drinking Water								
<b>200.8 MET ICPMS Drinking Water</b>								
Analytical Method: EPA 200.8								
Pace Analytical Services - Ormond Beach								
Lead	1.1	ug/L	1.0	1		01/05/24 15:48	7439-92-1	

### REPORT OF LABORATORY ANALYSIS

This report shall not be reproduced, except in full,  
without the written consent of Pace Analytical Services, LLC.



### ANALYTICAL RESULTS

Project: HA00057

Pace Project No.: 35851652

Sample: HA00057-28		Lab ID: 35851652028	Collected: 12/21/23 19:07	Received: 01/04/24 10:25	Matrix: Drinking Water			
Parameters	Results	Units	Report Limit	DF	Prepared	Analyzed	CAS No.	Qual
<b>200.8 MET ICPMS Drinking Water</b>		Analytical Method: EPA 200.8 Pace Analytical Services - Ormond Beach						
Lead	ND	ug/L	1.0	1		01/05/24 15:52	7439-92-1	

### REPORT OF LABORATORY ANALYSIS

This report shall not be reproduced, except in full,  
without the written consent of Pace Analytical Services, LLC.



### ANALYTICAL RESULTS

Project: HA00057

Pace Project No.: 35851652

Sample: HA00057-29		Lab ID: 35851652029	Collected: 12/21/23 19:09	Received: 01/04/24 10:25	Matrix: Drinking Water			
Parameters	Results	Units	Report Limit	DF	Prepared	Analyzed	CAS No.	Qual
<b>200.8 MET ICPMS Drinking Water</b>		Analytical Method: EPA 200.8 Pace Analytical Services - Ormond Beach						
Lead	ND	ug/L	1.0	1		01/05/24 15:53	7439-92-1	

### REPORT OF LABORATORY ANALYSIS

This report shall not be reproduced, except in full,  
without the written consent of Pace Analytical Services, LLC.



### ANALYTICAL RESULTS

Project: HA00057

Pace Project No.: 35851652

Sample: HA00057-30		Lab ID: 35851652030	Collected: 12/21/23 19:10	Received: 01/04/24 10:25	Matrix: Drinking Water			
Parameters	Results	Units	Report Limit	DF	Prepared	Analyzed	CAS No.	Qual
<b>200.8 MET ICPMS Drinking Water</b>		Analytical Method: EPA 200.8 Pace Analytical Services - Ormond Beach						
Lead	<b>4.9</b>	ug/L	1.0	1		01/05/24 15:55	7439-92-1	

### REPORT OF LABORATORY ANALYSIS

This report shall not be reproduced, except in full,  
without the written consent of Pace Analytical Services, LLC.





### ANALYTICAL RESULTS

Project: HA00057

Pace Project No.: 35851652

Sample: HA00057-31		Lab ID: 35851652031	Collected: 12/21/23 19:11	Received: 01/04/24 10:25	Matrix: Drinking Water			
Parameters	Results	Units	Report Limit	DF	Prepared	Analyzed	CAS No.	Qual
<b>200.8 MET ICPMS Drinking Water</b>		Analytical Method: EPA 200.8 Pace Analytical Services - Ormond Beach						
Lead	ND	ug/L	1.0	1		01/05/24 15:56	7439-92-1	

### REPORT OF LABORATORY ANALYSIS

This report shall not be reproduced, except in full,  
without the written consent of Pace Analytical Services, LLC.



### ANALYTICAL RESULTS

Project: HA00057

Pace Project No.: 35851652

Parameters	Results	Units	Report Limit	DF	Prepared	Analyzed	CAS No.	Qual
<b>Sample: HA00057-32</b>								
<b>Lab ID: 35851652032</b>								
Collected: 12/21/23 19:13 Received: 01/04/24 10:25 Matrix: Drinking Water								
<b>200.8 MET ICPMS Drinking Water</b>	Analytical Method: EPA 200.8 Pace Analytical Services - Ormond Beach							
Lead	ND	ug/L	1.0	1		01/05/24 15:58	7439-92-1	

### REPORT OF LABORATORY ANALYSIS

This report shall not be reproduced, except in full,  
without the written consent of Pace Analytical Services, LLC.



### ANALYTICAL RESULTS

Project: HA00057

Pace Project No.: 35851652

Sample: HA00057-33		Lab ID: 35851652033	Collected: 12/21/23 19:14	Received: 01/04/24 10:25	Matrix: Drinking Water			
Parameters	Results	Units	Report Limit	DF	Prepared	Analyzed	CAS No.	Qual
<b>200.8 MET ICPMS Drinking Water</b>		Analytical Method: EPA 200.8 Pace Analytical Services - Ormond Beach						
Lead	ND	ug/L	1.0	1		01/05/24 15:59	7439-92-1	

### REPORT OF LABORATORY ANALYSIS

This report shall not be reproduced, except in full,  
without the written consent of Pace Analytical Services, LLC.



### ANALYTICAL RESULTS

Project: HA00057

Pace Project No.: 35851652

Sample: HA00057-34		Lab ID: 35851652034	Collected: 12/21/23 19:17	Received: 01/04/24 10:25	Matrix: Drinking Water			
Parameters	Results	Units	Report Limit	DF	Prepared	Analyzed	CAS No.	Qual
<b>200.8 MET ICPMS Drinking Water</b>		Analytical Method: EPA 200.8 Pace Analytical Services - Ormond Beach						
Lead	<b>5.6</b>	ug/L	1.0	1		01/05/24 16:09	7439-92-1	

### REPORT OF LABORATORY ANALYSIS

This report shall not be reproduced, except in full,  
without the written consent of Pace Analytical Services, LLC.



### ANALYTICAL RESULTS

Project: HA00057

Pace Project No.: 35851652

Sample: HA00057-35		Lab ID: 35851652035	Collected: 12/21/23 19:20	Received: 01/04/24 10:25	Matrix: Drinking Water			
Parameters	Results	Units	Report Limit	DF	Prepared	Analyzed	CAS No.	Qual
<b>200.8 MET ICPMS Drinking Water</b>		Analytical Method: EPA 200.8 Pace Analytical Services - Ormond Beach						
Lead	ND	ug/L	1.0	1		01/05/24 16:13	7439-92-1	

### REPORT OF LABORATORY ANALYSIS

This report shall not be reproduced, except in full,  
without the written consent of Pace Analytical Services, LLC.



### ANALYTICAL RESULTS

Project: HA00057

Pace Project No.: 35851652

Sample: HA00057-36		Lab ID: 35851652036	Collected: 12/21/23 19:22	Received: 01/04/24 10:25	Matrix: Drinking Water			
Parameters	Results	Units	Report Limit	DF	Prepared	Analyzed	CAS No.	Qual
<b>200.8 MET ICPMS Drinking Water</b>		Analytical Method: EPA 200.8 Pace Analytical Services - Ormond Beach						
Lead	<b>9.0</b>	ug/L	1.0	1		01/05/24 16:15	7439-92-1	

### REPORT OF LABORATORY ANALYSIS

This report shall not be reproduced, except in full,  
without the written consent of Pace Analytical Services, LLC.



### ANALYTICAL RESULTS

Project: HA00057

Pace Project No.: 35851652

Sample: HA00057-37		Lab ID: 35851652037	Collected: 12/21/23 19:26	Received: 01/04/24 10:25	Matrix: Drinking Water			
Parameters	Results	Units	Report Limit	DF	Prepared	Analyzed	CAS No.	Qual
<b>200.8 MET ICPMS Drinking Water</b>		Analytical Method: EPA 200.8 Pace Analytical Services - Ormond Beach						
Lead	ND	ug/L	1.0	1		01/05/24 16:16	7439-92-1	

### REPORT OF LABORATORY ANALYSIS

This report shall not be reproduced, except in full,  
without the written consent of Pace Analytical Services, LLC.



### ANALYTICAL RESULTS

Project: HA00057

Pace Project No.: 35851652

Parameters	Results	Units	Report Limit	DF	Prepared	Analyzed	CAS No.	Qual
<b>Sample: HA00057-38</b>								
<b>Lab ID: 35851652038</b>								
Collected: 12/21/23 19:28								
Received: 01/04/24 10:25								
Matrix: Drinking Water								
<b>200.8 MET ICPMS Drinking Water</b>								
Analytical Method: EPA 200.8								
Pace Analytical Services - Ormond Beach								
Lead	ND	ug/L	1.0	1		01/05/24 16:18	7439-92-1	

### REPORT OF LABORATORY ANALYSIS

This report shall not be reproduced, except in full, without the written consent of Pace Analytical Services, LLC.





### ANALYTICAL RESULTS

Project: HA00057

Pace Project No.: 35851652

Sample: HA00057-39		Lab ID: 35851652039	Collected: 12/21/23 19:31	Received: 01/04/24 10:25	Matrix: Drinking Water			
Parameters	Results	Units	Report Limit	DF	Prepared	Analyzed	CAS No.	Qual
<b>200.8 MET ICPMS Drinking Water</b>		Analytical Method: EPA 200.8 Pace Analytical Services - Ormond Beach						
Lead	ND	ug/L	1.0	1		01/05/24 16:19	7439-92-1	

### REPORT OF LABORATORY ANALYSIS

This report shall not be reproduced, except in full,  
without the written consent of Pace Analytical Services, LLC.



### ANALYTICAL RESULTS

Project: HA00057

Pace Project No.: 35851652

Sample: HA00057-40		Lab ID: 35851652040	Collected: 12/21/23 19:33	Received: 01/04/24 10:25	Matrix: Drinking Water			
Parameters	Results	Units	Report Limit	DF	Prepared	Analyzed	CAS No.	Qual
<b>200.8 MET ICPMS Drinking Water</b>		Analytical Method: EPA 200.8 Pace Analytical Services - Ormond Beach						
Lead	ND	ug/L	1.0	1		01/05/24 16:20	7439-92-1	

### REPORT OF LABORATORY ANALYSIS

This report shall not be reproduced, except in full,  
without the written consent of Pace Analytical Services, LLC.



### ANALYTICAL RESULTS

Project: HA00057

Pace Project No.: 35851652

Sample: HA00057-41		Lab ID: 35851652041	Collected: 12/21/23 19:35	Received: 01/04/24 10:25	Matrix: Drinking Water			
Parameters	Results	Units	Report Limit	DF	Prepared	Analyzed	CAS No.	Qual
<b>200.8 MET ICPMS Drinking Water</b>		Analytical Method: EPA 200.8 Pace Analytical Services - Ormond Beach						
Lead	ND	ug/L	1.0	1		01/05/24 16:22	7439-92-1	

### REPORT OF LABORATORY ANALYSIS

This report shall not be reproduced, except in full,  
without the written consent of Pace Analytical Services, LLC.



### ANALYTICAL RESULTS

Project: HA00057

Pace Project No.: 35851652

Sample: HA00057-42	Lab ID: 35851652042	Collected: 12/21/23 19:37	Received: 01/04/24 10:25	Matrix: Drinking Water					
Parameters	Results	Units	Report Limit	DF	Prepared	Analyzed	CAS No.	Qual	
<b>200.8 MET ICPMS Drinking Water</b>	Analytical Method: EPA 200.8 Pace Analytical Services - Ormond Beach								
Lead	ND	ug/L	1.0	1		01/05/24 16:26	7439-92-1		

### REPORT OF LABORATORY ANALYSIS

This report shall not be reproduced, except in full, without the written consent of Pace Analytical Services, LLC.



### ANALYTICAL RESULTS

Project: HA00057

Pace Project No.: 35851652

Sample: HA00057-43		Lab ID: 35851652043	Collected: 12/21/23 19:38	Received: 01/04/24 10:25	Matrix: Drinking Water			
Parameters	Results	Units	Report Limit	DF	Prepared	Analyzed	CAS No.	Qual
<b>200.8 MET ICPMS Drinking Water</b>		Analytical Method: EPA 200.8 Pace Analytical Services - Ormond Beach						
Lead	ND	ug/L	1.0	1		01/05/24 16:28	7439-92-1	

### REPORT OF LABORATORY ANALYSIS

This report shall not be reproduced, except in full,  
without the written consent of Pace Analytical Services, LLC.



### ANALYTICAL RESULTS

Project: HA00057

Pace Project No.: 35851652

Sample: HA00057-44		Lab ID: 35851652044	Collected: 12/21/23 19:39	Received: 01/04/24 10:25	Matrix: Drinking Water			
Parameters	Results	Units	Report Limit	DF	Prepared	Analyzed	CAS No.	Qual
<b>200.8 MET ICPMS Drinking Water</b>		Analytical Method: EPA 200.8 Pace Analytical Services - Ormond Beach						
Lead	ND	ug/L	1.0	1		01/05/24 16:29	7439-92-1	

### REPORT OF LABORATORY ANALYSIS

This report shall not be reproduced, except in full,  
without the written consent of Pace Analytical Services, LLC.



### ANALYTICAL RESULTS

Project: HA00057

Pace Project No.: 35851652

Sample: HA00057-45		Lab ID: 35851652045	Collected: 12/21/23 19:41	Received: 01/04/24 10:25	Matrix: Drinking Water			
Parameters	Results	Units	Report Limit	DF	Prepared	Analyzed	CAS No.	Qual
<b>200.8 MET ICPMS Drinking Water</b>		Analytical Method: EPA 200.8 Pace Analytical Services - Ormond Beach						
Lead	ND	ug/L	1.0	1		01/05/24 16:30	7439-92-1	

### REPORT OF LABORATORY ANALYSIS

This report shall not be reproduced, except in full,  
without the written consent of Pace Analytical Services, LLC.



### ANALYTICAL RESULTS

Project: HA00057

Pace Project No.: 35851652

Parameters	Results	Units	Report Limit	DF	Prepared	Analyzed	CAS No.	Qual
<b>Sample: HA00057-46</b>								
<b>Lab ID: 35851652046</b>								
Collected: 12/21/23 19:43								
Received: 01/04/24 10:25								
Matrix: Drinking Water								
<b>200.8 MET ICPMS Drinking Water</b>								
Analytical Method: EPA 200.8								
Pace Analytical Services - Ormond Beach								
Lead	ND	ug/L	1.0	1		01/05/24 16:32	7439-92-1	

### REPORT OF LABORATORY ANALYSIS

This report shall not be reproduced, except in full, without the written consent of Pace Analytical Services, LLC.





### ANALYTICAL RESULTS

Project: HA00057

Pace Project No.: 35851652

Sample: HA00057-47		Lab ID: 35851652047	Collected: 12/21/23 19:45	Received: 01/04/24 10:25	Matrix: Drinking Water			
Parameters	Results	Units	Report Limit	DF	Prepared	Analyzed	CAS No.	Qual
<b>200.8 MET ICPMS Drinking Water</b>		Analytical Method: EPA 200.8 Pace Analytical Services - Ormond Beach						
Lead	ND	ug/L	1.0	1		01/05/24 16:33	7439-92-1	

### REPORT OF LABORATORY ANALYSIS

This report shall not be reproduced, except in full,  
without the written consent of Pace Analytical Services, LLC.



### ANALYTICAL RESULTS

Project: HA00057  
Pace Project No.: 35851652

Parameters	Results	Units	Report Limit	DF	Prepared	Analyzed	CAS No.	Qual
<b>Sample: HA00057-48</b>								
<b>Lab ID: 35851652048</b>								
Collected: 12/21/23 19:47								
Received: 01/04/24 10:25								
Matrix: Drinking Water								
<b>200.8 MET ICPMS Drinking Water</b>								
Analytical Method: EPA 200.8								
Pace Analytical Services - Ormond Beach								
Lead	ND	ug/L	1.0	1		01/05/24 16:35	7439-92-1	

### REPORT OF LABORATORY ANALYSIS

This report shall not be reproduced, except in full,  
without the written consent of Pace Analytical Services, LLC.



**QUALITY CONTROL DATA**

Project: HA00057  
 Pace Project No.: 35851652

QC Batch: 978504 Analysis Method: EPA 200.8  
 QC Batch Method: EPA 200.8 Analysis Description: 200.8 MET No Prep Drinking Water  
 Laboratory: Pace Analytical Services - Ormond Beach  
 Associated Lab Samples: 35851652001, 35851652002, 35851652003, 35851652004, 35851652005, 35851652006, 35851652007, 35851652008, 35851652009, 35851652010, 35851652011, 35851652012, 35851652013

METHOD BLANK: 5382952 Matrix: Water  
 Associated Lab Samples: 35851652001, 35851652002, 35851652003, 35851652004, 35851652005, 35851652006, 35851652007, 35851652008, 35851652009, 35851652010, 35851652011, 35851652012, 35851652013

Parameter	Units	Blank Result	Reporting Limit	Analyzed	Qualifiers
Lead	ug/L	ND	1.0	01/05/24 15:23	

LABORATORY CONTROL SAMPLE: 5382953

Parameter	Units	Spike Conc.	LCS Result	LCS % Rec	% Rec Limits	Qualifiers
Lead	ug/L	50	51.8	104	85-115	

MATRIX SPIKE & MATRIX SPIKE DUPLICATE: 5382948 5382949

Parameter	35851584004 Units	Result	MS Spike Conc.	MSD Spike Conc.	MS Result	MSD Result	MS % Rec	MSD % Rec	% Rec Limits	RPD	Qual
Lead	ug/L	ND	50	50	50.9	49.6	101	99	70-130	3	

MATRIX SPIKE & MATRIX SPIKE DUPLICATE: 5382950 5382951

Parameter	35851652013 Units	Result	MS Spike Conc.	MSD Spike Conc.	MS Result	MSD Result	MS % Rec	MSD % Rec	% Rec Limits	RPD	Qual
Lead	ug/L	ND	50	50	50.8	49.4	101	99	70-130	3	

Results presented on this page are in the units indicated by the "Units" column except where an alternate unit is presented to the right of the result.

**REPORT OF LABORATORY ANALYSIS**

This report shall not be reproduced, except in full, without the written consent of Pace Analytical Services, LLC.



**QUALITY CONTROL DATA**

Project: HA00057  
 Pace Project No.: 35851652

QC Batch: 978506 Analysis Method: EPA 200.8  
 QC Batch Method: EPA 200.8 Analysis Description: 200.8 MET No Prep Drinking Water  
 Laboratory: Pace Analytical Services - Ormond Beach  
 Associated Lab Samples: 35851652014, 35851652015, 35851652016, 35851652019, 35851652020, 35851652021, 35851652022, 35851652023, 35851652024, 35851652025, 35851652026, 35851652027, 35851652028, 35851652029, 35851652030, 35851652031, 35851652032, 35851652033

METHOD BLANK: 5382958 Matrix: Water  
 Associated Lab Samples: 35851652014, 35851652015, 35851652016, 35851652019, 35851652020, 35851652021, 35851652022, 35851652023, 35851652024, 35851652025, 35851652026, 35851652027, 35851652028, 35851652029, 35851652030, 35851652031, 35851652032, 35851652033

Parameter	Units	Blank Result	Reporting Limit	Analyzed	Qualifiers
Lead	ug/L	ND	1.0	01/05/24 16:03	

LABORATORY CONTROL SAMPLE: 5382959

Parameter	Units	Spike Conc.	LCS Result	LCS % Rec	% Rec Limits	Qualifiers
Lead	ug/L	50	52.4	105	85-115	

MATRIX SPIKE & MATRIX SPIKE DUPLICATE: 5382954 5382955

Parameter	Units	35851652014 Result	MS Spike Conc.	MSD Spike Conc.	MS Result	MSD Result	MS % Rec	MSD % Rec	% Rec Limits	RPD	Qual
Lead	ug/L	ND	50	50	50.0	50.5	100	101	70-130	1	

MATRIX SPIKE & MATRIX SPIKE DUPLICATE: 5382956 5382957

Parameter	Units	35851652033 Result	MS Spike Conc.	MSD Spike Conc.	MS Result	MSD Result	MS % Rec	MSD % Rec	% Rec Limits	RPD	Qual
Lead	ug/L	ND	50	50	50.3	50.4	100	100	70-130	0	

Results presented on this page are in the units indicated by the "Units" column except where an alternate unit is presented to the right of the result.

**REPORT OF LABORATORY ANALYSIS**

This report shall not be reproduced, except in full, without the written consent of Pace Analytical Services, LLC.



**QUALITY CONTROL DATA**

Project: HA00057

Pace Project No.: 35851652

QC Batch:	978507	Analysis Method:	EPA 200.8
QC Batch Method:	EPA 200.8	Analysis Description:	200.8 MET No Prep Drinking Water
		Laboratory:	Pace Analytical Services - Ormond Beach
Associated Lab Samples:	35851652034, 35851652035, 35851652036, 35851652037, 35851652038, 35851652039, 35851652040, 35851652041, 35851652042, 35851652043, 35851652044, 35851652045, 35851652046, 35851652047, 35851652048		

METHOD BLANK:	5382964	Matrix:	Water
Associated Lab Samples:	35851652034, 35851652035, 35851652036, 35851652037, 35851652038, 35851652039, 35851652040, 35851652041, 35851652042, 35851652043, 35851652044, 35851652045, 35851652046, 35851652047, 35851652048		

Parameter	Units	Blank Result	Reporting Limit	Analyzed	Qualifiers
Lead	ug/L	ND	1.0	01/05/24 16:49	

LABORATORY CONTROL SAMPLE:	5382965					
Parameter	Units	Spike Conc.	LCS Result	LCS % Rec	% Rec Limits	Qualifiers
Lead	ug/L	50	51.8	104	85-115	

MATRIX SPIKE & MATRIX SPIKE DUPLICATE:	5382960			5382961							
Parameter	Units	35851652034 Result	MS Spike Conc.	MSD Spike Conc.	MS Result	MSD Result	MS % Rec	MSD % Rec	% Rec Limits	RPD	Qual
Lead	ug/L	5.6	50	50	57.6	56.3	104	101	70-130	2	

MATRIX SPIKE & MATRIX SPIKE DUPLICATE:	5382962			5382963							
Parameter	Units	35851653005 Result	MS Spike Conc.	MSD Spike Conc.	MS Result	MSD Result	MS % Rec	MSD % Rec	% Rec Limits	RPD	Qual
Lead	ug/L	1.2	50	50	52.9	52.0	103	102	70-130	2	

Results presented on this page are in the units indicated by the "Units" column except where an alternate unit is presented to the right of the result.

**REPORT OF LABORATORY ANALYSIS**

This report shall not be reproduced, except in full, without the written consent of Pace Analytical Services, LLC.



**QUALITY CONTROL DATA**

Project: HA00057  
 Pace Project No.: 35851652

QC Batch: 978627 Analysis Method: EPA 200.8  
 QC Batch Method: EPA 200.8 Analysis Description: 200.8 MET Drinking Water  
 Laboratory: Pace Analytical Services - Ormond Beach  
 Associated Lab Samples: 35851652017, 35851652018

METHOD BLANK: 5384148 Matrix: Water  
 Associated Lab Samples: 35851652017, 35851652018

Parameter	Units	Blank Result	Reporting Limit	Analyzed	Qualifiers
Lead	ug/L	ND	1.0	01/06/24 14:48	

LABORATORY CONTROL SAMPLE: 5384149

Parameter	Units	Spike Conc.	LCS Result	LCS % Rec	% Rec Limits	Qualifiers
Lead	ug/L	50	48.5	97	85-115	

MATRIX SPIKE & MATRIX SPIKE DUPLICATE: 5384150 5384151

Parameter	Units	35851338015 Result	MS	MSD	MS	MSD	MS	MSD	% Rec	RPD	Qual
			Spike Conc.	Spike Conc.	Result	Result	% Rec	% Rec	Limits		
Lead	ug/L	0.0018 mg/L	50	50	52.0	52.4	100	101	70-130	1	

MATRIX SPIKE & MATRIX SPIKE DUPLICATE: 5384152 5384153

Parameter	Units	35851652017 Result	MS	MSD	MS	MSD	MS	MSD	% Rec	RPD	Qual
			Spike Conc.	Spike Conc.	Result	Result	% Rec	% Rec	Limits		
Lead	ug/L	512	50	50	526	524	27	24	70-130	0	J(M1),L

Results presented on this page are in the units indicated by the "Units" column except where an alternate unit is presented to the right of the result.

**REPORT OF LABORATORY ANALYSIS**

This report shall not be reproduced, except in full,  
 without the written consent of Pace Analytical Services, LLC.



## QUALIFIERS

Project: HA00057

Pace Project No.: 35851652

---

### DEFINITIONS

DF - Dilution Factor, if reported, represents the factor applied to the reported data due to dilution of the sample aliquot.

ND - Not Detected at or above adjusted reporting limit.

TNTC - Too Numerous To Count

MDL - Adjusted Method Detection Limit.

PQL - Practical Quantitation Limit.

RL - Reporting Limit - The lowest concentration value that meets project requirements for quantitative data with known precision and bias for a specific analyte in a specific matrix.

S - Surrogate

1,2-Diphenylhydrazine decomposes to and cannot be separated from Azobenzene using Method 8270. The result for each analyte is a combined concentration.

Consistent with EPA guidelines, unrounded data are displayed and have been used to calculate % recovery and RPD values.

LCS(D) - Laboratory Control Sample (Duplicate)

MS(D) - Matrix Spike (Duplicate)

DUP - Sample Duplicate

RPD - Relative Percent Difference

NC - Not Calculable.

SG - Silica Gel - Clean-Up

U - Indicates the compound was analyzed for, but not detected.

N-Nitrosodiphenylamine decomposes and cannot be separated from Diphenylamine using Method 8270. The result reported for each analyte is a combined concentration.

Reported results are not rounded until the final step prior to reporting. Therefore, calculated parameters that are typically reported as "Total" may vary slightly from the sum of the reported component parameters.

Pace Analytical is TNI accredited. Contact your Pace PM for the current list of accredited analytes.

TNI - The NELAC Institute.

### ANALYTE QUALIFIERS

I The reported value is between the laboratory method detection limit and the laboratory practical quantitation limit.

U Compound was analyzed for but not detected.

J(M1) Estimated Value. Matrix spike recovery exceeded QC limits. Batch accepted based on laboratory control sample (LCS) recovery.

L Off-scale high. Actual value is known to be greater than value given.

## REPORT OF LABORATORY ANALYSIS

This report shall not be reproduced, except in full,  
without the written consent of Pace Analytical Services, LLC.



### QUALITY CONTROL DATA CROSS REFERENCE TABLE

Project: HA00057

Pace Project No.: 35851652

Lab ID	Sample ID	QC Batch Method	QC Batch	Analytical Method	Analytical Batch
35851652017	HA00057-17	EPA 200.8	978627	EPA 200.8	978644
35851652018	HA00057-18	EPA 200.8	978627	EPA 200.8	978644
35851652001	HA00057-01	EPA 200.8	978504		
35851652002	HA00057-02	EPA 200.8	978504		
35851652003	HA00057-03	EPA 200.8	978504		
35851652004	HA00057-04	EPA 200.8	978504		
35851652005	HA00057-05	EPA 200.8	978504		
35851652006	HA00057-06	EPA 200.8	978504		
35851652007	HA00057-07	EPA 200.8	978504		
35851652008	HA00057-08	EPA 200.8	978504		
35851652009	HA00057-09	EPA 200.8	978504		
35851652010	HA00057-10	EPA 200.8	978504		
35851652011	HA00057-11	EPA 200.8	978504		
35851652012	HA00057-12	EPA 200.8	978504		
35851652013	HA00057-13	EPA 200.8	978504		
35851652014	HA00057-14	EPA 200.8	978506		
35851652015	HA00057-15	EPA 200.8	978506		
35851652016	HA00057-16	EPA 200.8	978506		
35851652019	HA00057-19	EPA 200.8	978506		
35851652020	HA00057-20	EPA 200.8	978506		
35851652021	HA00057-21	EPA 200.8	978506		
35851652022	HA00057-22	EPA 200.8	978506		
35851652023	HA00057-23	EPA 200.8	978506		
35851652024	HA00057-24	EPA 200.8	978506		
35851652025	HA00057-25	EPA 200.8	978506		
35851652026	HA00057-26	EPA 200.8	978506		
35851652027	HA00057-27	EPA 200.8	978506		
35851652028	HA00057-28	EPA 200.8	978506		
35851652029	HA00057-29	EPA 200.8	978506		
35851652030	HA00057-30	EPA 200.8	978506		
35851652031	HA00057-31	EPA 200.8	978506		
35851652032	HA00057-32	EPA 200.8	978506		
35851652033	HA00057-33	EPA 200.8	978506		
35851652034	HA00057-34	EPA 200.8	978507		
35851652035	HA00057-35	EPA 200.8	978507		
35851652036	HA00057-36	EPA 200.8	978507		
35851652037	HA00057-37	EPA 200.8	978507		
35851652038	HA00057-38	EPA 200.8	978507		
35851652039	HA00057-39	EPA 200.8	978507		
35851652040	HA00057-40	EPA 200.8	978507		
35851652041	HA00057-41	EPA 200.8	978507		
35851652042	HA00057-42	EPA 200.8	978507		
35851652043	HA00057-43	EPA 200.8	978507		
35851652044	HA00057-44	EPA 200.8	978507		
35851652045	HA00057-45	EPA 200.8	978507		
35851652046	HA00057-46	EPA 200.8	978507		
35851652047	HA00057-47	EPA 200.8	978507		

### REPORT OF LABORATORY ANALYSIS

This report shall not be reproduced, except in full, without the written consent of Pace Analytical Services, LLC.





### QUALITY CONTROL DATA CROSS REFERENCE TABLE

Project: HA00057  
Pace Project No.: 35851652

---

Lab ID	Sample ID	QC Batch Method	QC Batch	Analytical Method	Analytical Batch
35851652048	HA00057-48	EPA 200.8	978507		

### REPORT OF LABORATORY ANALYSIS

This report shall not be reproduced, except in full,  
without the written consent of Pace Analytical Services, LLC.



35851652

Transfer Chain of Custody  
Pace Analytical Services, LLC  
HA00057

SENDING LABORATORY

PDC Laboratories, Inc.  
2231 W Altorfer Dr  
Peoria, IL 61615  
(800) 752-6651

RECEIVING LABORATORY

Pace Analytical - Ormond Beach  
8 East Tower Circle  
Ormond Beach, FL 32174  
(386) 676-4842

**Sample: HA00057-01**  
**Name: FES - 1**

**Sampled: 12/21/23 17:13**  
**Matrix: Drinking Water**  
**Preservative: HNO3, pH <2**

Analysis	Due	Expires	Comments
01-Pb 200.8 DW Schools	01/12/24 16:00	06/18/24 17:13	

**Sample: HA00057-02**  
**Name: FES - 2**

**Sampled: 12/21/23 17:16**  
**Matrix: Drinking Water**  
**Preservative: HNO3, pH <2**

Analysis	Due	Expires	Comments
01-Pb 200.8 DW Schools	01/12/24 16:00	06/18/24 17:16	

**Sample: HA00057-03**  
**Name: FES - 3**

**Sampled: 12/21/23 17:19**  
**Matrix: Drinking Water**  
**Preservative: HNO3, pH <2**

Analysis	Due	Expires	Comments
01-Pb 200.8 DW Schools	01/12/24 16:00	06/18/24 17:19	

**Sample: HA00057-04**  
**Name: FES - 4**

**Sampled: 12/21/23 17:21**  
**Matrix: Drinking Water**  
**Preservative: HNO3, pH <2**

Analysis	Due	Expires	Comments
01-Pb 200.8 DW Schools	01/12/24 16:00	06/18/24 17:21	

**Sample: HA00057-05**  
**Name: FES - 5**

**Sampled: 12/21/23 17:24**  
**Matrix: Drinking Water**  
**Preservative: HNO3, pH <2**

Analysis	Due	Expires	Comments
01-Pb 200.8 DW Schools	01/12/24 16:00	06/18/24 17:24	

**Transfer Chain of Custody**  
**Pace Analytical Services, LLC**  
**HA00057**

**SENDING LABORATORY**

PDC Laboratories, Inc.  
 2231 W Altorfer Dr  
 Peoria, IL 61615  
 (800) 752-6651

**RECEIVING LABORATORY**

Pace Analytical - Ormond Beach  
 8 East Tower Circle  
 Ormond Beach, FL 32174  
 (386) 676-4842

**Sample: HA00057-06**  
**Name: FES - 6**

**Sampled: 12/21/23 17:26**  
**Matrix: Drinking Water**  
**Preservative: HNO<sub>3</sub>, pH <2**

Analysis	Due	Expires	Comments
01-Pb 200.8 DW Schools	01/12/24 16:00	06/18/24 17:26	

**Sample: HA00057-07**  
**Name: FES - 7**

**Sampled: 12/21/23 17:28**  
**Matrix: Drinking Water**  
**Preservative: HNO<sub>3</sub>, pH <2**

Analysis	Due	Expires	Comments
01-Pb 200.8 DW Schools	01/12/24 16:00	06/18/24 17:28	

**Sample: HA00057-08**  
**Name: FES - 8**

**Sampled: 12/21/23 17:30**  
**Matrix: Drinking Water**  
**Preservative: HNO<sub>3</sub>, pH <2**

Analysis	Due	Expires	Comments
01-Pb 200.8 DW Schools	01/12/24 16:00	06/18/24 17:30	

**Sample: HA00057-09**  
**Name: FES - 9**

**Sampled: 12/21/23 17:32**  
**Matrix: Drinking Water**  
**Preservative: HNO<sub>3</sub>, pH <2**

Analysis	Due	Expires	Comments
01-Pb 200.8 DW Schools	01/12/24 16:00	06/18/24 17:32	

**Sample: HA00057-10**  
**Name: FES - 10**

**Sampled: 12/21/23 17:35**  
**Matrix: Drinking Water**  
**Preservative: HNO<sub>3</sub>, pH <2**

Analysis	Due	Expires	Comments
01-Pb 200.8 DW Schools	01/12/24 16:00	06/18/24 17:35	

**Transfer Chain of Custody**  
**Pace Analytical Services, LLC**  
**HA00057**

**SENDING LABORATORY**

PDC Laboratories, Inc.  
 2231 W Altorfer Dr  
 Peoria, IL 61615  
 (800) 752-6651

**RECEIVING LABORATORY**

Pace Analytical - Ormond Beach  
 8 East Tower Circle  
 Ormond Beach, FL 32174  
 (386) 676-4842

**Sample: HA00057-11**  
**Name: FES - 11**

**Sampled: 12/21/23 17:36**  
**Matrix: Drinking Water**  
**Preservative: HNO3, pH <2**

Analysis	Due	Expires	Comments
01-Pb 200.8 DW Schools	01/12/24 16:00	06/18/24 17:36	

**Sample: HA00057-12**  
**Name: FES - 12**

**Sampled: 12/21/23 17:38**  
**Matrix: Drinking Water**  
**Preservative: HNO3, pH <2**

Analysis	Due	Expires	Comments
01-Pb 200.8 DW Schools	01/12/24 16:00	06/18/24 17:38	

**Sample: HA00057-13**  
**Name: FES - 13**

**Sampled: 12/21/23 17:40**  
**Matrix: Drinking Water**  
**Preservative: HNO3, pH <2**

Analysis	Due	Expires	Comments
01-Pb 200.8 DW Schools	01/12/24 16:00	06/18/24 17:40	

**Sample: HA00057-14**  
**Name: FES - 14**

**Sampled: 12/21/23 17:41**  
**Matrix: Drinking Water**  
**Preservative: HNO3, pH <2**

Analysis	Due	Expires	Comments
01-Pb 200.8 DW Schools	01/12/24 16:00	06/18/24 17:41	

**Sample: HA00057-15**  
**Name: FES - 15**

**Sampled: 12/21/23 17:42**  
**Matrix: Drinking Water**  
**Preservative: HNO3, pH <2**

Analysis	Due	Expires	Comments
01-Pb 200.8 DW Schools	01/12/24 16:00	06/18/24 17:42	

**Transfer Chain of Custody**  
**Pace Analytical Services, LLC**  
**HA00057**

**SENDING LABORATORY**

PDC Laboratories, Inc.  
 2231 W Altorfer Dr  
 Peoria, IL 61615  
 (800) 752-6651

**RECEIVING LABORATORY**

Pace Analytical - Ormond Beach  
 8 East Tower Circle  
 Ormond Beach, FL 32174  
 (386) 676-4842

**Sample: HA00057-16**  
**Name: FES - 16**

**Sampled: 12/21/23 17:45**  
**Matrix: Drinking Water**  
**Preservative: HNO<sub>3</sub>, pH <2**

Analysis	Due	Expires	Comments
01-Pb 200.8 DW Schools	01/12/24 16:00	06/18/24 17:45	

**Sample: HA00057-17**  
**Name: FES - 17**

**Sampled: 12/21/23 17:47**  
**Matrix: Drinking Water**  
**Preservative: HNO<sub>3</sub>, pH <2**

Analysis	Due	Expires	Comments
01-Pb 200.8 DW Schools	01/12/24 16:00	06/18/24 17:47	

**Sample: HA00057-18**  
**Name: FES - 18**

**Sampled: 12/21/23 17:48**  
**Matrix: Drinking Water**  
**Preservative: HNO<sub>3</sub>, pH <2**

Analysis	Due	Expires	Comments
01-Pb 200.8 DW Schools	01/12/24 16:00	06/18/24 17:48	

**Sample: HA00057-19**  
**Name: FES - 19**

**Sampled: 12/21/23 17:50**  
**Matrix: Drinking Water**  
**Preservative: HNO<sub>3</sub>, pH <2**

Analysis	Due	Expires	Comments
01-Pb 200.8 DW Schools	01/12/24 16:00	06/18/24 17:50	

**Sample: HA00057-20**  
**Name: FES - 20**

**Sampled: 12/21/23 17:52**  
**Matrix: Drinking Water**  
**Preservative: HNO<sub>3</sub>, pH <2**

Analysis	Due	Expires	Comments
01-Pb 200.8 DW Schools	01/12/24 16:00	06/18/24 17:52	

**Transfer Chain of Custody**  
**Pace Analytical Services, LLC**  
**HA00057**

**SENDING LABORATORY**

PDC Laboratories, Inc.  
 2231 W Altorfer Dr  
 Peoria, IL 61615  
 (800) 752-6651

**RECEIVING LABORATORY**

Pace Analytical - Ormond Beach  
 8 East Tower Circle  
 Ormond Beach, FL 32174  
 (386) 676-4842

**Sample: HA00057-21**  
**Name: FES - 21**

**Sampled: 12/21/23 17:53**  
**Matrix: Drinking Water**  
**Preservative: HNO<sub>3</sub>, pH <2**

Analysis	Due	Expires	Comments
01-Pb 200.8 DW Schools	01/12/24 16:00	06/18/24 17:53	

**Sample: HA00057-22**  
**Name: FES - 22**

**Sampled: 12/21/23 17:55**  
**Matrix: Drinking Water**  
**Preservative: HNO<sub>3</sub>, pH <2**

Analysis	Due	Expires	Comments
01-Pb 200.8 DW Schools	01/12/24 16:00	06/18/24 17:55	

**Sample: HA00057-23**  
**Name: FES - 23**

**Sampled: 12/21/23 17:57**  
**Matrix: Drinking Water**  
**Preservative: HNO<sub>3</sub>, pH <2**

Analysis	Due	Expires	Comments
01-Pb 200.8 DW Schools	01/12/24 16:00	06/18/24 17:57	

**Sample: HA00057-24**  
**Name: FES - 24**

**Sampled: 12/21/23 17:58**  
**Matrix: Drinking Water**  
**Preservative: HNO<sub>3</sub>, pH <2**

Analysis	Due	Expires	Comments
01-Pb 200.8 DW Schools	01/12/24 16:00	06/18/24 17:58	

**Sample: HA00057-25**  
**Name: FES - 25**

**Sampled: 12/21/23 18:00**  
**Matrix: Drinking Water**  
**Preservative: HNO<sub>3</sub>, pH <2**

Analysis	Due	Expires	Comments
01-Pb 200.8 DW Schools	01/12/24 16:00	06/18/24 18:00	

**Transfer Chain of Custody**  
**Pace Analytical Services, LLC**  
**HA00057**

**SENDING LABORATORY**

PDC Laboratories, Inc.  
 2231 W Altorfer Dr  
 Peoria, IL 61615  
 (800) 752-6651

**RECEIVING LABORATORY**

Pace Analytical - Ormond Beach  
 8 East Tower Circle  
 Ormond Beach, FL 32174  
 (386) 676-4842

**Sample: HA00057-26**  
**Name: FES - 26**

**Sampled: 12/21/23 18:01**  
**Matrix: Drinking Water**  
**Preservative: HNO<sub>3</sub>, pH <2**

Analysis	Due	Expires	Comments
01-Pb 200.8 DW Schools	01/12/24 16:00	06/18/24 18:01	

**Sample: HA00057-27**  
**Name: FES - 27**

**Sampled: 12/21/23 18:02**  
**Matrix: Drinking Water**  
**Preservative: HNO<sub>3</sub>, pH <2**

Analysis	Due	Expires	Comments
01-Pb 200.8 DW Schools	01/12/24 16:00	06/18/24 18:02	

**Sample: HA00057-28**  
**Name: FES - 28**

**Sampled: 12/21/23 18:07**  
**Matrix: Drinking Water**  
**Preservative: HNO<sub>3</sub>, pH <2**

Analysis	Due	Expires	Comments
01-Pb 200.8 DW Schools	01/12/24 16:00	06/18/24 18:07	

**Sample: HA00057-29**  
**Name: FES - 29**

**Sampled: 12/21/23 18:09**  
**Matrix: Drinking Water**  
**Preservative: HNO<sub>3</sub>, pH <2**

Analysis	Due	Expires	Comments
01-Pb 200.8 DW Schools	01/12/24 16:00	06/18/24 18:09	

**Sample: HA00057-30**  
**Name: FES - 30**

**Sampled: 12/21/23 18:10**  
**Matrix: Drinking Water**  
**Preservative: HNO<sub>3</sub>, pH <2**

Analysis	Due	Expires	Comments
01-Pb 200.8 DW Schools	01/12/24 16:00	06/18/24 18:10	

**Transfer Chain of Custody**  
**Pace Analytical Services, LLC**  
**HA00057**

**SENDING LABORATORY**

PDC Laboratories, Inc.  
 2231 W Altorfer Dr  
 Peoria, IL 61615  
 (800) 752-6651

**RECEIVING LABORATORY**

Pace Analytical - Ormond Beach  
 8 East Tower Circle  
 Ormond Beach, FL 32174  
 (386) 676-4842

**Sample: HA00057-31**  
**Name: FES - 31**

**Sampled: 12/21/23 18:11**  
**Matrix: Drinking Water**  
**Preservative: HNO<sub>3</sub>, pH <2**

Analysis	Due	Expires	Comments
01-Pb 200.8 DW Schools	01/12/24 16:00	06/18/24 18:11	

**Sample: HA00057-32**  
**Name: FES - 32**

**Sampled: 12/21/23 18:13**  
**Matrix: Drinking Water**  
**Preservative: HNO<sub>3</sub>, pH <2**

Analysis	Due	Expires	Comments
01-Pb 200.8 DW Schools	01/12/24 16:00	06/18/24 18:13	

**Sample: HA00057-33**  
**Name: FES - 33**

**Sampled: 12/21/23 18:14**  
**Matrix: Drinking Water**  
**Preservative: HNO<sub>3</sub>, pH <2**

Analysis	Due	Expires	Comments
01-Pb 200.8 DW Schools	01/12/24 16:00	06/18/24 18:14	

**Sample: HA00057-34**  
**Name: FES - 34**

**Sampled: 12/21/23 18:17**  
**Matrix: Drinking Water**  
**Preservative: HNO<sub>3</sub>, pH <2**

Analysis	Due	Expires	Comments
01-Pb 200.8 DW Schools	01/12/24 16:00	06/18/24 18:17	

**Sample: HA00057-35**  
**Name: FES - 35**

**Sampled: 12/21/23 18:20**  
**Matrix: Drinking Water**  
**Preservative: HNO<sub>3</sub>, pH <2**

Analysis	Due	Expires	Comments
01-Pb 200.8 DW Schools	01/12/24 16:00	06/18/24 18:20	



**Transfer Chain of Custody**  
**Pace Analytical Services, LLC**  
**HA00057**

**SENDING LABORATORY**

PDC Laboratories, Inc.  
 2231 W Altorfer Dr  
 Peoria, IL 61615  
 (800) 752-6651

**RECEIVING LABORATORY**

Pace Analytical - Ormond Beach  
 8 East Tower Circle  
 Ormond Beach, FL 32174  
 (386) 676-4842

**Sample: HA00057-36**  
**Name: FES - 36**

**Sampled: 12/21/23 18:22**  
**Matrix: Drinking Water**  
**Preservative: HNO<sub>3</sub>, pH <2**

Analysis	Due	Expires	Comments
01-Pb 200.8 DW Schools	01/12/24 16:00	06/18/24 18:22	

**Sample: HA00057-37**  
**Name: FES - 37**

**Sampled: 12/21/23 18:26**  
**Matrix: Drinking Water**  
**Preservative: HNO<sub>3</sub>, pH <2**

Analysis	Due	Expires	Comments
01-Pb 200.8 DW Schools	01/12/24 16:00	06/18/24 18:26	

**Sample: HA00057-38**  
**Name: FES - 38**

**Sampled: 12/21/23 18:28**  
**Matrix: Drinking Water**  
**Preservative: HNO<sub>3</sub>, pH <2**

Analysis	Due	Expires	Comments
01-Pb 200.8 DW Schools	01/12/24 16:00	06/18/24 18:28	

**Sample: HA00057-39**  
**Name: FES - 39**

**Sampled: 12/21/23 18:31**  
**Matrix: Drinking Water**  
**Preservative: HNO<sub>3</sub>, pH <2**

Analysis	Due	Expires	Comments
01-Pb 200.8 DW Schools	01/12/24 16:00	06/18/24 18:31	

**Sample: HA00057-40**  
**Name: FES - 40**

**Sampled: 12/21/23 18:33**  
**Matrix: Drinking Water**  
**Preservative: HNO<sub>3</sub>, pH <2**

Analysis	Due	Expires	Comments
01-Pb 200.8 DW Schools	01/12/24 16:00	06/18/24 18:33	

**Transfer Chain of Custody**  
**Pace Analytical Services, LLC**  
**HA00057**

**SENDING LABORATORY**

PDC Laboratories, Inc.  
 2231 W Altorfer Dr  
 Peoria, IL 61615  
 (800) 752-6651

**RECEIVING LABORATORY**

Pace Analytical - Ormond Beach  
 8 East Tower Circle  
 Ormond Beach, FL 32174  
 (386) 676-4842

**Sample: HA00057-41**  
**Name: FES - 41**

**Sampled: 12/21/23 18:35**  
**Matrix: Drinking Water**  
**Preservative: HNO<sub>3</sub>, pH <2**

Analysis	Due	Expires	Comments
01-Pb 200.8 DW Schools	01/12/24 16:00	06/18/24 18:35	

**Sample: HA00057-42**  
**Name: FES - 42**

**Sampled: 12/21/23 18:37**  
**Matrix: Drinking Water**  
**Preservative: HNO<sub>3</sub>, pH <2**

Analysis	Due	Expires	Comments
01-Pb 200.8 DW Schools	01/12/24 16:00	06/18/24 18:37	

**Sample: HA00057-43**  
**Name: FES - 43**

**Sampled: 12/21/23 18:38**  
**Matrix: Drinking Water**  
**Preservative: HNO<sub>3</sub>, pH <2**

Analysis	Due	Expires	Comments
01-Pb 200.8 DW Schools	01/12/24 16:00	06/18/24 18:38	

**Sample: HA00057-44**  
**Name: FES - 44**

**Sampled: 12/21/23 18:39**  
**Matrix: Drinking Water**  
**Preservative: HNO<sub>3</sub>, pH <2**

Analysis	Due	Expires	Comments
01-Pb 200.8 DW Schools	01/12/24 16:00	06/18/24 18:39	

**Sample: HA00057-45**  
**Name: FES - 45**

**Sampled: 12/21/23 18:41**  
**Matrix: Drinking Water**  
**Preservative: HNO<sub>3</sub>, pH <2**

Analysis	Due	Expires	Comments
01-Pb 200.8 DW Schools	01/12/24 16:00	06/18/24 18:41	

**Transfer Chain of Custody**  
**Pace Analytical Services, LLC**  
**HA00057**

**SENDING LABORATORY**

PDC Laboratories, Inc.  
 2231 W Altorfer Dr  
 Peoria, IL 61615  
 (800) 752-6651

**RECEIVING LABORATORY**

Pace Analytical - Ormond Beach  
 8 East Tower Circle  
 Ormond Beach, FL 32174  
 (386) 676-4842

**Sample: HA00057-46**  
**Name: FES - 46**

**Sampled: 12/21/23 18:43**  
**Matrix: Drinking Water**  
**Preservative: HNO<sub>3</sub>, pH <2**

Analysis	Due	Expires	Comments
01-Pb 200.8 DW Schools	01/12/24 16:00	06/18/24 18:43	

**Sample: HA00057-47**  
**Name: FES - 47**

**Sampled: 12/21/23 18:45**  
**Matrix: Drinking Water**  
**Preservative: HNO<sub>3</sub>, pH <2**

Analysis	Due	Expires	Comments
01-Pb 200.8 DW Schools	01/12/24 16:00	06/18/24 18:45	

**Sample: HA00057-48**  
**Name: FES - 48**

**Sampled: 12/21/23 18:47**  
**Matrix: Drinking Water**  
**Preservative: HNO<sub>3</sub>, pH <2**

Analysis	Due	Expires	Comments
01-Pb 200.8 DW Schools	01/12/24 16:00	06/18/24 18:47	

**Please email results to Chenise Lambert-Sykes at [Chenise.Lambert-Sykes@pacelabs.com](mailto:Chenise.Lambert-Sykes@pacelabs.com)**

Date Shipped: 1/3/24 Total # of Containers: 48 Sample Origin (State): \_\_\_\_\_ PO #: \_\_\_\_\_  
 Turn-Around Time Requested  NORMAL  RUSH Date Results Needed: 1/11/24

Relinquished By	Date/Time	Received By	Date/Time	Sample Temperature Upon Receipt	_____ °C
<i>[Signature]</i>	<u>1/3/24 1500</u>	<u>TSI/Pace</u>	<u>1/4/24 1025</u>	Sample(s) Received on Ice	Y or N
				Proper Bottles Received in Good Condition	Y or N
				Bottles Filled with Adequate Volume	Y or N
				Samples Received Within Hold Time	Y or N
				Date/Time Taken From Sample Bottle	Y or N

Sample Condition Upon Receipt Form (SCUR)

Project #  
Project Manager:  
Client:

W0#: 35851652

PM: BTS Due Date: 01/11/24  
CLIENT: PACHAZ

Date and Initials of person:

Examining contents: BSF

Label: \_\_\_\_\_

Deliver: NPI

pH: \_\_\_\_\_

Initials: ZRB

Thermometer Used: T-409

Date: 1/4/24

Time: 1027

State of Origin: \_\_\_\_\_

For WV projects, all containers verified to  $\leq 6^{\circ}\text{C}$

Cooler #1 Temp.  $^{\circ}\text{C}$  13.7 (Visual) -0.1 (Correction Factor) 13.6 (Actual)

Cooler #2 Temp.  $^{\circ}\text{C}$  13.5 (Visual) \_\_\_\_\_ (Correction Factor) 13.4 (Actual)

Cooler #3 Temp.  $^{\circ}\text{C}$  14.8 (Visual) \_\_\_\_\_ (Correction Factor) 14.7 (Actual)

Cooler #4 Temp.  $^{\circ}\text{C}$  15.3 (Visual) \_\_\_\_\_ (Correction Factor) 15.2 (Actual)

Cooler #5 Temp.  $^{\circ}\text{C}$  16.0 (Visual) \_\_\_\_\_ (Correction Factor) 15.9 (Actual)

Cooler #6 Temp.  $^{\circ}\text{C}$  15.7 (Visual) \_\_\_\_\_ (Correction Factor) 15.6 (Actual)

Recheck for OOT  $^{\circ}\text{C}$  14.4 (Visual) \_\_\_\_\_ (Correction Factor) 14.3 (Actual)

- Samples on ice, cooling process has begun.
- Samples on ice, cooling process has begun.
- Samples on ice, cooling process has begun.
- Samples on ice, cooling process has begun.
- Samples on ice, cooling process has begun.
- Samples on ice, cooling process has begun.

Time: \_\_\_\_\_ Initials: \_\_\_\_\_

Courier:  Fed Ex  UPS  USPS  Client  Commercial  Pace  Other

Shipping Method:  Standard Overnight  First Overnight  Priority Overnight  Ground  International Priority

Billing:  Recipient  Sender  Third Party  Credit Card  Unknown  Other

Tracking # 7003 7810 9862

Custody Seal Present:  Yes  No Seal properly placed and intact:  Yes  No

Packing Material:  Bubble Wrap  Bubble Bags  None  Other

Ice:  Wet  Blue  Dry  None  Melted

Samples shorted to lab:  Yes  No (If yes, complete the following)

Shorted Date: \_\_\_\_\_

Bottle Quantity / Type: \_\_\_\_\_

Shorted Time: \_\_\_\_\_

Chain of Custody: Present:  Yes  No | Filled Out:  Yes  No  N/A | Sampler Name:  Yes  No  N/A

Relinquished To Pace:  Yes  No  N/A | Sampling Date(s):  Yes  No  N/A | Sampling Time(s):  Yes  No  N/A

Samples Arrived within Hold Time

Rush Turnaround Requested on COC:  Yes  No  N/A

Sufficient Volume:  Yes  No  N/A

Correct Containers Used:  Yes  No  N/A

Containers Intact:  Yes  No  N/A

Sample Labels Match COC (Sample ID, Date/Time of Collection):  Yes  No  N/A

Containers needing acid / base preservation have been checked:  Yes  No  N/A

Containers needing preservation are found to be in compliance with A recommendation:  Yes  No  N/A

Exceptions: Vials, Microbiology, O&G, PFAS

Headspace in Volatile Vials? (>6mm):  Yes  No  N/A

Blank Present:  Yes  No  N/A

Comments / Resolutions (use back for additional comments):  Yes  No  N/A

Preservation Information

Preservative: \_\_\_\_\_ Date: \_\_\_\_\_

Lot / Trace: \_\_\_\_\_ Time: \_\_\_\_\_

Amount added (mL): \_\_\_\_\_ Initials: \_\_\_\_\_

Sample Condition Upon Receipt Form (SCUR)



Project #  
Project Manager:  
Client:

1025

Date and Initials of person:

Examining contents: \_\_\_\_\_

Label: \_\_\_\_\_

Deliver: NOI

pH: \_\_\_\_\_

Initials: ZAB

Thermometer Used: T-409

Date: 1/14/24

Time: 1027

State of Origin: \_\_\_\_\_  For WV projects, all containers verified to ≤6 °C

Cooler #1 Temp. °C	<u>4.9</u> (Visual)	<u>-0.1</u> (Correction Factor)	<u>14.9</u> (Actual)
Cooler #2 Temp. °C	<u>15.9</u> (Visual)		<u>15.8</u> (Actual)
Cooler #3 Temp. °C	<u>13.7</u> (Visual)		<u>13.6</u> (Actual)
Cooler #4 Temp. °C	<u>14.2</u> (Visual)		<u>14.1</u> (Actual)
Cooler #5 Temp. °C	<u>14.8</u> (Visual)		<u>14.7</u> (Actual)
Cooler #6 Temp. °C	<u>15.1</u> (Visual)		<u>15.0</u> (Actual)
Recheck for OOT °C	<u>16.2</u> (Visual)		<u>16.1</u> (Actual)

- Samples on ice, cooling process has begun.
- Samples on ice, cooling process has begun.
- Samples on ice, cooling process has begun.
- Samples on ice, cooling process has begun.
- Samples on ice, cooling process has begun.
- Samples on ice, cooling process has begun.

Time: \_\_\_\_\_ Initials: \_\_\_\_\_

Courier:  Fed Ex  UPS  USPS  Client  Commercial  Pace  Other: \_\_\_\_\_

Shipping Method:  Standard Overnight  First Overnight  Priority Overnight  Ground  International Priority  Other: \_\_\_\_\_

Billing:  Recipient  Sender  Third Party  Credit Card  Unknown

Tracking # \_\_\_\_\_

Custody Seal Present:  Yes  No Seal properly placed and intact:  Yes  No

Ice:  Wet  Blue  Dry  None  Melted

Packing Material:  Bubble Wrap  Bubble Bags  None  Other: \_\_\_\_\_

Samples shorted to lab:  Yes  No (If yes, complete the following)

Shorted Date: \_\_\_\_\_

Shorted Time: \_\_\_\_\_

Bottle Quantity / Type: \_\_\_\_\_

Chain of Custody:	Present: <input type="checkbox"/> Yes <input type="checkbox"/> No   Filled Out: <input type="checkbox"/> Yes <input type="checkbox"/> No <input type="checkbox"/> N/A   Sampler Name: <input type="checkbox"/> Yes <input type="checkbox"/> No <input type="checkbox"/> N/A								
	Relinquished To Pace: <input type="checkbox"/> Yes <input type="checkbox"/> No <input type="checkbox"/> N/A   Sampling Date(s): <input type="checkbox"/> Yes <input type="checkbox"/> No <input type="checkbox"/> N/A   Sampling Time(s): <input type="checkbox"/> Yes <input type="checkbox"/> No <input type="checkbox"/> N/A								
Samples Arrived within Hold Time.	<input type="checkbox"/> Yes <input type="checkbox"/> No <input type="checkbox"/> N/A   Comments: _____								
Rush Turnaround Requested on COC.	<input type="checkbox"/> Yes <input type="checkbox"/> No <input type="checkbox"/> N/A   Comments: _____								
Sufficient Volume	<input type="checkbox"/> Yes <input type="checkbox"/> No <input type="checkbox"/> N/A   Comments: _____								
Correct Containers Used.	<input type="checkbox"/> Yes <input type="checkbox"/> No <input type="checkbox"/> N/A   Comments: _____								
Containers Intact.	<input type="checkbox"/> Yes <input type="checkbox"/> No <input type="checkbox"/> N/A   Comments: _____								
Sample Labels Match COC (Sample ID, Date/Time of Collection).	<input type="checkbox"/> Yes <input type="checkbox"/> No <input type="checkbox"/> N/A   Comments: _____								
All containers needing acid / base preservation have been checked.	<input type="checkbox"/> Yes <input type="checkbox"/> No <input type="checkbox"/> N/A								
All containers needing preservation are found to be in compliance with EPA recommendation:	<input type="checkbox"/> Yes <input type="checkbox"/> No <input type="checkbox"/> N/A								
Exceptions: Vials, Microbiology, O&G, PFAS									
Headspace in Volatile Vials? (>6mm):	<input type="checkbox"/> Yes <input type="checkbox"/> No <input type="checkbox"/> N/A								
Trip Blank Present:	<input type="checkbox"/> Yes <input type="checkbox"/> No <input type="checkbox"/> N/A								
<table border="1"> <tr> <td colspan="2">Preservation Information</td> </tr> <tr> <td>Preservative: _____</td> <td>Date: _____</td> </tr> <tr> <td>Lot / Trace: _____</td> <td>Time: _____</td> </tr> <tr> <td>Amount added (mL): _____</td> <td>Initials: _____</td> </tr> </table>		Preservation Information		Preservative: _____	Date: _____	Lot / Trace: _____	Time: _____	Amount added (mL): _____	Initials: _____
Preservation Information									
Preservative: _____	Date: _____								
Lot / Trace: _____	Time: _____								
Amount added (mL): _____	Initials: _____								

Comments / Resolutions (use back for additional comments):

SCUR CONTINUATION



Sample Condition Upon Receipt Form (SCUR)

Project #  
Project Manager:  
Client:

1025

Date and Initials of person:

Examining contents: \_\_\_\_\_

Label: \_\_\_\_\_

Deliver: N/A

pH: \_\_\_\_\_

Initials: ZNB

Thermometer Used: T-409

Date: 1/14/24

Time: 1027

State of Origin: \_\_\_\_\_

For WV projects, all containers verified to  $\leq 6^\circ\text{C}$

Cooler #1 Temp. °C	<u>6.4</u> (Visual)	<u>0.1</u> (Correction Factor)	<u>6.3</u> (Actual)
Cooler #2 Temp. °C	<u>7.2</u> (Visual)	(Correction Factor)	<u>7.1</u> (Actual)
Cooler #3 Temp. °C	<u>5.6</u> (Visual)	(Correction Factor)	<u>5.5</u> (Actual)
Cooler #4 Temp. °C	<u>4.5</u> (Visual)	(Correction Factor)	<u>4.4</u> (Actual)
Cooler #5 Temp. °C	<u>5.8</u> (Visual)	(Correction Factor)	<u>5.7</u> (Actual)
Cooler #6 Temp. °C	<u>6.3</u> (Visual)	(Correction Factor)	<u>6.2</u> (Actual)

- Samples on ice, cooling process has begun.
- Samples on ice, cooling process has begun.
- Samples on ice, cooling process has begun.
- Samples on ice, cooling process has begun.
- Samples on ice, cooling process has begun.
- Samples on ice, cooling process has begun.

Time: \_\_\_\_\_ Initials: \_\_\_\_\_

Recheck for OOT °C \_\_\_\_\_ (Visual) \_\_\_\_\_ (Correction Factor) \_\_\_\_\_ (Actual)

Courier:  Fed Ex  UPS  USPS  Client  Commercial  Pace  Other:

Shipping Method:  Standard Overnight  First Overnight  Priority Overnight  Ground  International Priority  Other:

Billing:  Recipient  Sender  Third Party  Credit Card  Unknown

Tracking # \_\_\_\_\_

Custody Seal Present:  Yes  No Seal properly placed and intact:  Yes  No

Ice:  Wet  Blue  Dry  None  Melted

Packing Material:  Bubble Wrap  Bubble Bags  None  Other:

Samples shorted to lab:  Yes  No (If yes, complete the following)

Shorted Date: \_\_\_\_\_ Shorted Time: \_\_\_\_\_

Bottle Quantity / Type: \_\_\_\_\_

Chain of Custody:	Present: <input type="checkbox"/> Yes <input type="checkbox"/> No   Filled Out: <input type="checkbox"/> Yes <input type="checkbox"/> No <input type="checkbox"/> N/A   Sampler Name: <input type="checkbox"/> Yes <input type="checkbox"/> No <input type="checkbox"/> N/A								
	Relinquished To Pace: <input type="checkbox"/> Yes <input type="checkbox"/> No <input type="checkbox"/> N/A   Sampling Date(s): <input type="checkbox"/> Yes <input type="checkbox"/> No <input type="checkbox"/> N/A   Sampling Time(s): <input type="checkbox"/> Yes <input type="checkbox"/> No <input type="checkbox"/> N/A								
Samples Arrived within Hold Time.	<input type="checkbox"/> Yes <input type="checkbox"/> No <input type="checkbox"/> N/A   Comments: _____								
Rush Turnaround Requested on COC.	<input type="checkbox"/> Yes <input type="checkbox"/> No <input type="checkbox"/> N/A   Comments: _____								
Sufficient Volume.	<input type="checkbox"/> Yes <input type="checkbox"/> No <input type="checkbox"/> N/A   Comments: _____								
Correct Containers Used.	<input type="checkbox"/> Yes <input type="checkbox"/> No <input type="checkbox"/> N/A   Comments: _____								
Containers Intact.	<input type="checkbox"/> Yes <input type="checkbox"/> No <input type="checkbox"/> N/A   Comments: _____								
Sample Labels Match COC (Sample ID, Date/Time of Collection).	<input type="checkbox"/> Yes <input type="checkbox"/> No <input type="checkbox"/> N/A   Comments: _____								
All containers needing acid / base preservation have been checked.	<input type="checkbox"/> Yes <input type="checkbox"/> No <input type="checkbox"/> N/A								
All containers needing preservation are found to be in compliance with EPA recommendation:	<input type="checkbox"/> Yes <input type="checkbox"/> No <input type="checkbox"/> N/A								
Exceptions: Vials, Microbiology, O&G, PFAS									
Headspace in Volatile Vials? (>6mm):	<input type="checkbox"/> Yes <input type="checkbox"/> No <input type="checkbox"/> N/A								
Trip Blank Present:	<input type="checkbox"/> Yes <input type="checkbox"/> No <input type="checkbox"/> N/A								
<table border="1"> <tr> <td colspan="2">Preservation Information</td> </tr> <tr> <td>Preservative: _____</td> <td>Date: _____</td> </tr> <tr> <td>Lot / Trace: _____</td> <td>Time: _____</td> </tr> <tr> <td>Amount added (mL): _____</td> <td>Initials: _____</td> </tr> </table>		Preservation Information		Preservative: _____	Date: _____	Lot / Trace: _____	Time: _____	Amount added (mL): _____	Initials: _____
Preservation Information									
Preservative: _____	Date: _____								
Lot / Trace: _____	Time: _____								
Amount added (mL): _____	Initials: _____								

Comments / Resolutions (use back for additional comments):

SCUR CONTINUED

REGULATORY PROGRAM (CIRCLE):	NPDES
MORBCA	RCRA
CCDD	TACO: RES OR IND/COMM

ALL HIGHLIGHTED AREAS MUST BE COMPLETED BY CLIENT (PLEASE PRINT)

1 CLIENT SCI Engineering	PROJECT NUMBER 2016-0860.2T	PROJECT LOCATION Forder Elem	PURCHASE ORDER #	3 ANALYSIS REQUESTED + +	4 (FOR LAB USE ONLY) LOGIN # <u>HIA00057</u> LOGGED BY: _____ CLIENT: <u>SCI Engineering</u> PROJECT: <u>Drinking Water Lead</u> PROJ. MGR.: <u>Chenise Lambert-Sykes</u> CUSTODY SEAL #: _____	
	ADDRESS 130 Point West Blvd	PHONE NUMBER (314) 581-7570	E-MAIL ggrissom@sciengineering.com			DATE SHIPPED
	CITY STATE ZIP St. Charles, MO 63301	SAMPLER (PLEASE PRINT) Dan Velucher	MATRIX TYPES: WW- WASTEWATER DW- DRINKING WATER GW- GROUND WATER WWSL- SLUDGE NAS- NON AQUEOUS SOLID LCHT- LEACHATE OL- OIL SO- SOIL SOL- SOLID			
	CONTACT PERSON Glen Grissom	SAMPLER'S SIGNATURE <i>D. Velucher</i>				

2 SAMPLE DESCRIPTION (UNIQUE DESCRIPTION AS IT WILL APPEAR ON THE ANALYTICAL REPORT)	DATE COLLECTED	TIME COLLECTED	SAMPLE TYPE		MATRIX TYPE	BOTTLE COUNT	PRES CODE CLIENT PROVIDED	DW Pb	Turb Check	REMARKS
			GRAB	COMP						
FES-1	12-21-23	1713	X		DW	1	6	X	X	
FES-2		1716						X	X	
FES-3		1719						X	X	
FES-4		1721						X	X	
FES-5		1724						X	X	
FES-6		1726						X	X	
FES-7		1728						X	X	
FES-8		1730						X	X	
FES-9		1732						X	X	
FES-10		1735						X	X	
FES-11		1736						X	X	

CHEMICAL PRESERVATION CODES: 1-HCL 2-H2SO4 3-HNO3 4-NAOH 5-NA2S2O3 6-UNPRESERVED 7-OTHER

5 TURNAROUND TIME REQUESTED (PLEASE CIRCLE) (RUSH TAT IS SUBJECT TO PACE LABS APPROVAL AND SURCHARGE)	NORMAL RUSH	DATE RESULTS NEEDED	6 I understand that by initialing this box I give the lab permission to proceed with analysis, even though it may not meet all sample conformance requirements as defined in the receiving facility's Sample Acceptance Policy and the data will be qualified. Qualified data may NOT be acceptable to report to all regulatory authorities.
RUSH RESULTS VIA (PLEASE CIRCLE) EMAIL PHONE	EMAIL IF DIFFERENT FROM ABOVE: PHONE # IF DIFFERENT FROM ABOVE:	PROCEED WITH ANALYSIS AND QUALIFY RESULTS: (INITIALS)	

7 RELINQUISHED BY: (SIGNATURE) <i>D. Velucher</i>	DATE 12/29/23	RECEIVED BY: (SIGNATURE)	DATE 12/29/23	8 COMMENTS: (FOR LAB USE ONLY) SAMPLE TEMPERATURE UPON RECEIPT <u>IR5</u> 22.4 °C CHILL PROCESS STARTED PRIOR TO RECEIPT Y OR N SAMPLE(S) RECEIVED ON ICE Y OR N SAMPLE ACCEPTANCE NONCONFORMANT REPORT IS NEEDED Y OR N DATE AND TIME TAKEN FROM SAMPLE BOTTLE _____
	TIME 4:00pm	<i>Dan Grissom</i>	TIME 1640	
	DATE 1/2/24	RECEIVED BY: (SIGNATURE)	DATE 1-2-24	
	TIME 10:05	<i>elmy um</i>	TIME 1020	
RELINQUISHED BY: (SIGNATURE) <i>elmy um</i>	DATE 1-2-24	RECEIVED BY: (SIGNATURE)	DATE 1/2/24	
	TIME 1535	<i>[Signature]</i>	TIME 1535	

Page 90 of 94

REGULATORY PROGRAM (CIRCLE):	NPDES
MORBCA	RCRA
CCDD	TACO: RES OR IND/COMM

**CHAIN OF CUSTODY RECORD**  
 STATE WHERE SAMPLE COLLECTED MO

ALL HIGHLIGHTED AREAS MUST BE COMPLETED BY CLIENT (PLEASE PRINT)

<b>1</b> CLIENT SCI Engineering ADDRESS 130 Point West Blvd CITY STATE ZIP St. Charles, MO 63301 CONTACT PERSON Glen Grissom	PROJECT NUMBER 2016-0860.2T	PROJECT LOCATION Forder Elem	PURCHASE ORDER #	<b>3</b> ANALYSIS REQUESTED + + DW Pb Turb Check	<b>4</b> (FOR LAB USE ONLY) LOGIN # <u>H1A00057</u> LOGGED BY: <u>SMB</u> CLIENT: <u>SCI Engineering</u> PROJECT: <u>Drinking Water Lead</u> PROJ. MGR.: <u>Chenise Lambert-Sykes</u> CUSTODY SEAL #: _____
	PHONE NUMBER (314) 581-7570	E-MAIL ggrissom@sciengineering.com	DATE SHIPPED		
	SAMPLER (PLEASE PRINT) <u>Dan Vielweber</u>	MATRIX TYPES: WW- WASTEWATER DW- DRINKING WATER GW- GROUND WATER WWSL- SLUDGE NAS- NON AQUEOUS SOLID LCHL- LEACHATE OL- OIL SO- SOIL SOL- SOLID			
	SAMPLER'S SIGNATURE <u>[Signature]</u>				

2 SAMPLE DESCRIPTION (UNIQUE DESCRIPTION AS IT WILL APPEAR ON THE ANALYTICAL REPORT)	DATE COLLECTED	TIME COLLECTED	SAMPLE TYPE		MATRIX TYPE	BOTTLE COUNT	PRES CODE CLIENT PROVIDED	DW	Pb	Turb	Check	REMARKS
			GRAB	COMP								
FES-12	12-21-23	1738	X		DW	1	6	X	X			
FES-13		1740						X	X			
FES-14		1741						X	X			
FES-15		1742						X	X			
FES-16		1745						X	X			
FES-17		1747						X	X			
FES-18		1748						X	X			
FES-19		1750						X	X			
FES-20		1752						X	X			
FES-21		1753						X	X			
FES-22		1755						X	X			

CHEMICAL PRESERVATION CODES: 1-HCL 2-H2SO4 3-HNO3 4-NAOH 5-NA2S2O3 6-UNPRESERVED 7-OTHER

<b>5</b> TURNAROUND TIME REQUESTED (PLEASE CIRCLE) (RUSH TAT IS SUBJECT TO PACE LABS APPROVAL AND SURCHARGE) NORMAL <u>RUSH</u> RUSH RESULTS VIA (PLEASE CIRCLE) EMAIL PHONE EMAIL IF DIFFERENT FROM ABOVE: PHONE # IF DIFFERENT FROM ABOVE:	DATE RESULTS NEEDED <b>6</b> I understand that by initialing this box I give the lab permission to proceed with analysis, even though it may not meet all sample conformance requirements as defined in the receiving facility's Sample Acceptance Policy and the data will be qualified. Qualified data may NOT be acceptable to report to all regulatory authorities. PROCEED WITH ANALYSIS AND QUALIFY RESULTS: (INITIALS) _____
--	---

<b>7</b> RELINQUISHED BY: (SIGNATURE) <u>[Signature]</u> RELINQUISHED BY: (SIGNATURE) <u>[Signature]</u> RELINQUISHED BY: (SIGNATURE) <u>[Signature]</u>	DATE 12-22-23	RECEIVED BY: (SIGNATURE) <u>[Signature]</u>	DATE 12/29/23	<b>8</b> COMMENTS: (FOR LAB USE ONLY) SAMPLE TEMPERATURE UPON RECEIPT <u>IR5</u> <u>22.4</u> °C CHILL PROCESS STARTED PRIOR TO RECEIPT Y OR N SAMPLE(S) RECEIVED ON ICE Y OR N SAMPLE ACCEPTANCE NONCONFORMANT REPORT IS NEEDED Y OR N DATE AND TIME TAKEN FROM SAMPLE BOTTLE _____
	TIME		TIME 1640	
	DATE 1/2/24	RECEIVED BY: (SIGNATURE) <u>[Signature]</u>	DATE 1-2-24	
	TIME 0805		TIME 1620	
DATE 1-2-24	RECEIVED BY: (SIGNATURE) <u>[Signature]</u>	DATE 1/2/24	TIME 1535	
TIME 1535				



REGULATORY PROGRAM (CIRCLE):	NPDES
MORBCA	RCRA
CCDD	TACO: RES OR IND/COMM

**CHAIN OF CUSTODY RECORD**  
 STATE WHERE SAMPLE COLLECTED MO

ALL HIGHLIGHTED AREAS MUST BE COMPLETED BY CLIENT (PLEASE PRINT)

1 CLIENT SCI Engineering ADDRESS 130 Point West Blvd CITY STATE ZIP St. Charles, MO 63301 CONTACT PERSON Glen Grissom	PROJECT NUMBER 2016-0860-2T	PROJECT LOCATION Forder Elem	PURCHASE ORDER #	3 ANALYSIS REQUESTED + + DW Pb Turb Check	4 (FOR LAB USE ONLY) LOGIN # <u>H1A00057</u> LOGGED BY: <u>SM</u> CLIENT: <u>SCI Engineering</u> PROJECT: <u>Drinking Water Lead</u> PROJ. MGR.: <u>Chenise Lambert-Sykes</u> CUSTODY SEAL #: _____
	PHONE NUMBER (314) 581-7570	E-MAIL ggrissom@sciengineering.com	DATE SHIPPED		
	SAMPLER (PLEASE PRINT)		MATRIX TYPES: WW- WASTEWATER DW- DRINKING WATER GW- GROUND WATER WWSL- SLUDGE NAS- NON AQUEOUS SOLID LCHT- LEACHATE OL- OIL SO- SOIL SOL- SOLID		
	SAMPLER'S SIGNATURE				

2 SAMPLE DESCRIPTION (UNIQUE DESCRIPTION AS IT WILL APPEAR ON THE ANALYTICAL REPORT)	DATE COLLECTED	TIME COLLECTED	SAMPLE TYPE		MATRIX TYPE	BOTTLE COUNT	PRES CODE CLIENT PROVIDED	DW	Pb	Turb	Check	REMARKS
			GRAB	COMP								
FES-23	12-21-23	1757	X		DW	1	6	X	X			
FES-24		1758						X	X			
FES-25		1800						X	X			
FES-26		1801						X	X			
FES-27		1802						X	X			
FES-28		1807						X	X			
FES-29		1809						X	X			
FES-30		1810						X	X			
FES-31		1811						X	X			
FES-32		1813						X	X			
FES-33		1814						X	X			

CHEMICAL PRESERVATION CODES: 1-HCL 2-H2SO4 3-HNO3 4-NAOH 5-NA2S2O3 6-UNPRESERVED 7-OTHER

5 TURNAROUND TIME REQUESTED (PLEASE CIRCLE) (RUSH TAT IS SUBJECT TO PACE LABS APPROVAL AND SURCHARGE) RUSH RESULTS VIA (PLEASE CIRCLE) EMAIL PHONE	<u>NORMAL</u> RUSH	DATE RESULTS NEEDED	6 I understand that by initialing this box I give the lab permission to proceed with analysis, even though it may not meet all sample conformance requirements as defined in the receiving facility's Sample Acceptance Policy and the data will be qualified. Qualified data may NOT be acceptable to report to all regulatory authorities.
EMAIL IF DIFFERENT FROM ABOVE: PHONE # IF DIFFERENT FROM ABOVE:			PROCEED WITH ANALYSIS AND QUALIFY RESULTS: (INITIALS) _____

7 RELINQUISHED BY: (SIGNATURE) DATE TIME RECEIVED BY: (SIGNATURE) DATE TIME RECEIVED BY: (SIGNATURE) DATE TIME RECEIVED BY: (SIGNATURE) DATE TIME	<u>12-22-23</u>	<u>Dennis Campbell</u>	<u>12/29/23</u>	8 COMMENTS: (FOR LAB USE ONLY) SAMPLE TEMPERATURE UPON RECEIPT <u>22.4</u> °C CHILL PROCESS STARTED PRIOR TO RECEIPT Y OR N SAMPLE(S) RECEIVED ON ICE Y OR N SAMPLE ACCEPTANCE NONCONFORMANT REPORT IS NEEDED Y OR N DATE AND TIME TAKEN FROM SAMPLE BOTTLE _____
	<u>1/2/24</u>	<u>Denny um</u>	<u>1/2/24</u>	
	<u>1/2/24</u>	<u>[Signature]</u>	<u>1/2/24</u>	
	<u>1/2-24</u>	<u>[Signature]</u>	<u>1/2/24</u>	

Page 92 of 94

REGULATORY PROGRAM (CIRCLE):	NPDES
MORBCA	RCRA
CCDD	TACO: RES OR IND/COMM

**CHAIN OF CUSTODY RECORD**  
 STATE WHERE SAMPLE COLLECTED MO

ALL HIGHLIGHTED AREAS MUST BE COMPLETED BY CLIENT (PLEASE PRINT)

1 CLIENT SCI Engineering ADDRESS 130 Point West Blvd CITY STATE ZIP St. Charles, MO 63301 CONTACT PERSON Glen Grissom	PROJECT NUMBER <u>2016-0860 ZT</u>	PROJECT LOCATION <u>Forder Elem</u>	PURCHASE ORDER #	3 ANALYSIS REQUESTED  + +  DW Pb Turb Check	4 (FOR LAB USE ONLY) LOGIN # <u>HA00057</u> LOGGED BY: <u>SMS</u> CLIENT: <u>SCI Engineering</u> PROJECT: <u>Drinking Water Lead</u> PROJ. MGR.: <u>Chenise Lambert-Sykes</u> CUSTODY SEAL #: _____
	PHONE NUMBER <u>(314) 581-7570</u>	E-MAIL <u>ggrissom@sciengineering.com</u>	DATE SHIPPED		
	SAMPLER (PLEASE PRINT) <u>Dan VreLueker</u>	SAMPLER'S SIGNATURE <u>Dan VreLueker</u>	MATRIX TYPES: WW- WASTEWATER DW- DRINKING WATER GW- GROUND WATER WWSL- SLUDGE NAS- NON AQUEOUS SOLID LCHT- LEACHATE OIL-OIL SO-SOIL SOL-SOLID		

2 SAMPLE DESCRIPTION (UNIQUE DESCRIPTION AS IT WILL APPEAR ON THE ANALYTICAL REPORT)	DATE COLLECTED	TIME COLLECTED	SAMPLE TYPE		MATRIX TYPE	BOTTLE COUNT	PRES CODE CLIENT PROVIDED	REMARKS
			GRAB	COMP				
FES-34	12-21-23	1817	x		DW	4	6	
FES-35		1820						
FES-36		1822						
FES-37		1826						
FES-38		1828						
FES-39		1831						
FES-40		1833						
FES-41		1835						
FES-42		1837						
FES-43		1838						
FES-44		1839						

CHEMICAL PRESERVATION CODES: 1-HCL 2-H2SO4 3-HNO3 4-NAOH 5-NA2S2O3 6-UNPRESERVED 7-OTHER

5 TURNAROUND TIME REQUESTED (PLEASE CIRCLE) (RUSH TAT IS SUBJECT TO PACE LABS APPROVAL AND SURCHARGE)	<input checked="" type="radio"/> NORMAL <input type="radio"/> RUSH	DATE RESULTS NEEDED	6 I understand that by initialing this box I give the lab permission to proceed with analysis, even though it may not meet all sample conformance requirements as defined in the receiving facility's Sample Acceptance Policy and the data will be qualified. Qualified data may NOT be acceptable to report to all regulatory authorities.
RUSH RESULTS VIA (PLEASE CIRCLE) EMAIL PHONE			PROCEED WITH ANALYSIS AND QUALIFY RESULTS: (INITIALS) _____
EMAIL IF DIFFERENT FROM ABOVE: _____	PHONE # IF DIFFERENT FROM ABOVE: _____		

7 RELINQUISHED BY: (SIGNATURE) <u>Dan VreLueker</u> RELINQUISHED BY: (SIGNATURE) <u>Dan Clark</u> RELINQUISHED BY: (SIGNATURE) <u>Clayton M</u>	DATE <u>12-22-23</u>	RECEIVED BY: (SIGNATURE) <u>Dan Clark</u>	DATE <u>12/29/23</u>	8 COMMENTS: (FOR LAB USE ONLY)  SAMPLE TEMPERATURE UPON RECEIPT <u>IR 5</u> <u>22.4</u> °C CHILL PROCESS STARTED PRIOR TO RECEIPT Y OR N SAMPLE(S) RECEIVED ON ICE Y OR N SAMPLE ACCEPTANCE NONCONFORMANT REPORT IS NEEDED Y OR N DATE AND TIME TAKEN FROM SAMPLE BOTTLE _____
	TIME _____	RECEIVED BY: (SIGNATURE) <u>Clayton M</u>	TIME <u>1640</u>	
	DATE <u>1/2/24</u>	RECEIVED BY: (SIGNATURE) <u>Clayton M</u>	DATE <u>1/2/24</u>	
	TIME <u>0805</u>	RECEIVED BY: (SIGNATURE) <u>Clayton M</u>	TIME <u>1020</u>	
	DATE <u>1-2-24</u>	RECEIVED BY: (SIGNATURE) <u>Clayton M</u>	DATE <u>1/2/24</u>	
	TIME <u>1535</u>	RECEIVED BY: (SIGNATURE) <u>Clayton M</u>	TIME <u>1535</u>	

Page 93 of 94

REGULATORY PROGRAM (CIRCLE):	NPDES
MORBCA	RCRA
CCDD	TACO: RES OR IND/COMM

**CHAIN OF CUSTODY RECORD**  
 STATE WHERE SAMPLE COLLECTED MO

ALL HIGHLIGHTED AREAS MUST BE COMPLETED BY CLIENT (PLEASE PRINT)

<b>1</b> CLIENT SCI Engineering  ADDRESS 130 Point West Blvd  CITY STATE ZIP St. Charles, MO 63301  CONTACT PERSON Glen Grissom	PROJECT NUMBER 2016-0860-2T	PROJECT LOCATION Forder Elem	PURCHASE ORDER #	<b>3</b> ANALYSIS REQUESTED  + +  DW Pb Turb Check	<b>4</b> (FOR LAB USE ONLY) LOGIN # HA00057 LOGGED BY: SPP CLIENT: SCI Engineering PROJECT: Drinking Water Lead PROJ. MGR.: Chenise Lambert-Sykes CUSTODY SEAL #:
	PHONE NUMBER (314) 581-7570	E-MAIL ggrissom@sciengineering.com	DATE SHIPPED		
	SAMPLER (PLEASE PRINT) Dan Uelweber	SAMPLER'S SIGNATURE 	MATRIX TYPES: WW- WASTEWATER DW- DRINKING WATER GW- GROUND WATER WWSL- SLUDGE NAS- NON AQUEOUS SOLID LCHT-LEACHATE OL-OIL SO-SOIL SOL-SOLID		

2 SAMPLE DESCRIPTION (UNIQUE DESCRIPTION AS IT WILL APPEAR ON THE ANALYTICAL REPORT)	DATE COLLECTED	TIME COLLECTED	SAMPLE TYPE		MATRIX TYPE	BOTTLE COUNT	PRES CODE CLIENT PROVIDED	DW	Pb	Turb	Check	REMARKS
			GRAB	COMP								
FES-45	12-21-23	1841	X		DW	1	6	X	X			
FES-46	1	1843	1		1	1	1	X	X			
FES-47	1	1845	1		1	1	1	X	X			
FES-48	1	1847	1		1	1	1	X	X			

CHEMICAL PRESERVATION CODES: 1-HCL 2-H2SO4 3-HNO3 4-NAOH 5-NA2S2O3 6-UNPRESERVED 7-OTHER

<b>5</b> TURNAROUND TIME REQUESTED (PLEASE CIRCLE) (RUSH TAT IS SUBJECT TO PACE LABS APPROVAL AND SURCHARGE) NORMAL RUSH RUSH RESULTS VIA (PLEASE CIRCLE) EMAIL PHONE EMAIL IF DIFFERENT FROM ABOVE: PHONE # IF DIFFERENT FROM ABOVE:	<b>6</b> I understand that by initialing this box I give the lab permission to proceed with analysis, even though it may not meet all sample conformance requirements as defined in the receiving facility's Sample Acceptance Policy and the data will be qualified. Qualified data may NOT be acceptable to report to all regulatory authorities. PROCEED WITH ANALYSIS AND QUALIFY RESULTS: (INITIALS)
---	--

<b>7</b> RELINQUISHED BY: (SIGNATURE)  RELINQUISHED BY: (SIGNATURE)  RELINQUISHED BY: (SIGNATURE) 	DATE 12-22-23 TIME	RECEIVED BY: (SIGNATURE) 	DATE 12/29/23 TIME 1640	<b>8</b> COMMENTS: (FOR LAB USE ONLY)  SAMPLE TEMPERATURE UPON RECEIPT 22.4 °C CHILL PROCESS STARTED PRIOR TO RECEIPT Y OR N SAMPLE(S) RECEIVED ON ICE Y OR N SAMPLE ACCEPTANCE NONCONFORMANT REPORT IS NEEDED Y OR N DATE AND TIME TAKEN FROM SAMPLE BOTTLE
	DATE 1/2/24 TIME 0805	RECEIVED BY: (SIGNATURE) 	DATE 1-2-24 TIME 1020	
	DATE 1-2-24 TIME 1535	RECEIVED BY: (SIGNATURE) 	DATE 1/2/24 TIME 1535	